

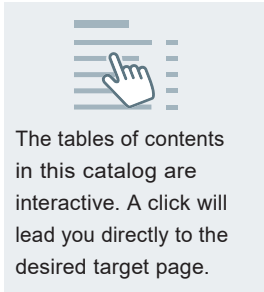
# PRODUCT PROGRAMME

Product catalog for  
robots of the brand

**Schwalm\***

## PRODUCT PROGRAMME 2025

---




## TABLE OF CONTENTS

| Robot type           | Page |
|----------------------|------|
| Schwalm* Talpa 2060* | 3    |
| Schwalm* Talpa 1330* | 40   |



**N•TEC II<sup>®</sup>**  
PREMIUM




Premium Diamond Tools for High-Performance Material Removal and Long Service Life

**Materials to be processed**

- Reinforced Concrete
- Concrete
- Deposits / Fouling
- Cast Iron
- Vitrified Clay

Page 5

**N•TEC II<sup>®</sup>**



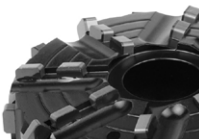
Field-Proven Standard Diamond Tools with Outstanding Value for Purchase Investment

**Materials to be processed**

- Reinforced Concrete
- Concrete
- Deposits / Fouling
- Cast Iron
- Vitrified Clay

Page 14

**BLACK•LINE**




High-Tech Milling Tools made of PCD with Unbeatable Cutting and Stock Removal Performance for Almost Every Material

**Materials to be processed**

- Concrete
- UV CIPP
- Deposits / Fouling
- Roots
- PVC
- Vitrified Clay
- Felt CIPP

Page 17

**linerCUT Pro<sup>®</sup>**




Absolutely Smooth-Running and Precise PCD Cutting Tools for Opening CIPP - Optimized for UV CIPP -

**Materials to be processed**

- UV CIPP
- PVC
- Felt CIPP

Page 24

**linerCUT Pro<sup>®</sup> 2.0**




Absolutely Smooth-Running and Precise PCD Cutting Tools for Opening CIPP - All Kinds of CIPP and PVC -

**Materials to be processed**

- UV CIPP
- PVC
- Felt CIPP

Page 28

**D•GRIT**



Milling Tools with Diamond Granules for Opening CIPP - Optimal for UV CIPP and Lined Cast Iron Pipes -

**Materials to be processed**

- UV CIPP
- PVC
- Felt CIPP

Page 30

**HM•LINE**



Cost-Efficient Milling Tools with Carbide Granulate Tipping for Opening and Reworking CIPP

**Materials to be processed**

- UV CIPP
- Roots
- PVC
- Felt CIPP

Page 32



Special Milling Tools for Processing Steel and Cast Iron

**Materials to be processed**

- Cast Iron
- Steel

Page 34

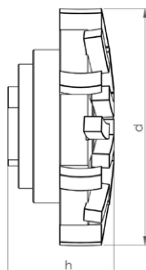


Functional Accessories

High-quality brushes, adapters, extensions, etc.

Page 35




**Mushroom-head milling cutter spring-mounted**

**Materials to be processed**

- Reinforced Concrete
- Concrete
- Deposits / Fouling
- Cast Iron
- Vitrified Clay

**Field of Application**

- Removal of intruding laterals
- Surface grinding and milling
- Removal of intruding obstacles
- Milling of offset socket transitions

| Article-No. | Pipe Ø mm | d mm | h mm | Segments | Weight kg |
|-------------|-----------|------|------|----------|-----------|
| 20044 P M14 | 200-300   | 90   | 40   | 21       | 0.7       |
| 20045 P M14 | 300-450   | 90   | 40   | 21       | 0.7       |
| 20046 P M14 | 450-600   | 90   | 40   | 21       | 0.7       |


**Mushroom-head milling cutter machined for minimum runout**

**Materials to be processed**

- Reinforced Concrete
- Concrete
- Deposits / Fouling
- Cast Iron
- Vitrified Clay

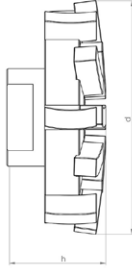
**Field of Application**

- Removal of intruding laterals
- Surface grinding and milling
- Milling of offset socket transitions

| Article-No. | Pipe Ø mm | d mm | h mm | Segments | Weight kg |
|-------------|-----------|------|------|----------|-----------|
| 20006 P M14 | 200-300   | 80   | 30   | 21       | 0.45      |
| 20007 P M14 | 300-450   | 80   | 30   | 21       | 0.45      |
| 20008 P M14 | 450-600   | 80   | 30   | 21       | 0.45      |



**Mushroom-head milling cutter machined for minimum runout**



**Materials to be processed**

- Reinforced Concrete
- Concrete
- Deposits / Fouling
- Cast Iron
- Vitrified Clay

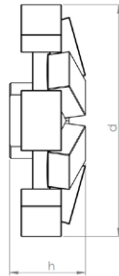
**Field of Application**

- Removal of intruding laterals
- Surface grinding and milling
- Milling of offset socket transitions

| Article-No. | Pipe Ø mm | d mm | h mm | Segments | Weight kg |
|-------------|-----------|------|------|----------|-----------|
| 20024 P M14 | 200-300   | 70   | 30   | 18       | 0.35      |
| 20025 P M14 | 300-450   | 70   | 30   | 18       | 0.35      |
| 20026 P M14 | 450-600   | 70   | 30   | 18       | 0.35      |



**Mushroom-head milling cutter machined for minimum runout**



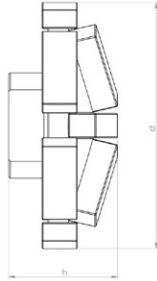
**Materials to be processed**

- Reinforced Concrete
- Concrete
- Deposits / Fouling
- Cast Iron
- Vitrified Clay

**Field of Application**

- Removal of intruding laterals
- Surface grinding and milling
- Milling of offset socket transitions

| Article-No. | d mm | h mm | Segments | Weight kg |
|-------------|------|------|----------|-----------|
| 20049 P M14 | 97   | 30   | 12       | 0.75      |

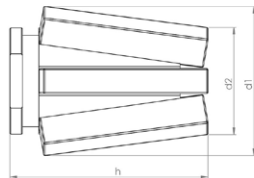

**Mushroom-head milling cutter machined for minimum runout**

**Materials to be processed**

- Reinforced Concrete
- Concrete
- Deposits / Fouling
- Cast Iron
- Vitrified Clay

**Field of Application**

- Removal of intruding laterals
- Surface grinding and milling
- Milling of offset socket transitions

| Article-No. | d mm | h mm | Segments | Weight kg |
|-------------|------|------|----------|-----------|
| 20050 P M14 | 70   | 30   | 12       | 0.35      |

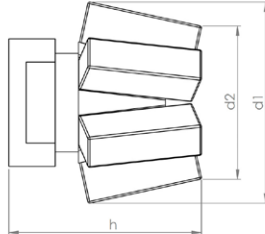

**Tapered milling cutter machined for minimum runout**

**Materials to be processed**

- Reinforced Concrete
- Concrete
- Cast Iron
- Vitrified Clay

**Field of Application**

- Preparatory milling of laterals
- Removal of intruding laterals

| Article-No. | d1 mm | d2 mm | h mm | Segments | Weight kg |
|-------------|-------|-------|------|----------|-----------|
| 20013 P M14 | 38    | 28    | 53   | 6        | 0.15      |

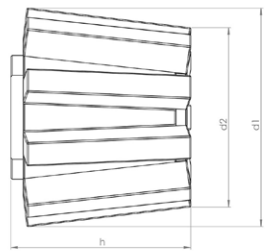

**Tapered milling cutter machined for minimum runout**

**Materials to be processed**

- Reinforced Concrete
- Concrete
- Cast Iron
- Vitrified Clay

**Field of Application**

- Preparatory milling of laterals
- Removal of intruding laterals

| Article-No. | d1 mm | d2 mm | h mm | Segments | Weight kg |
|-------------|-------|-------|------|----------|-----------|
| 20027 P M14 | 36    | 28    | 32   | 6        | 0.1       |

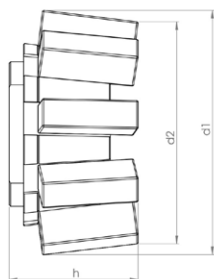

**Tapered milling cutter machined for minimum runout**

**Materials to be processed**

- Reinforced Concrete
- Concrete
- Cast Iron
- Vitrified Clay

**Field of Application**

- Preparatory milling of laterals
- Removal of intruding laterals

| Article-No. | d1 mm | d2 mm | h mm | Segments | Weight kg |
|-------------|-------|-------|------|----------|-----------|
| 20004 P M14 | 52    | 42    | 40   | 9        | 0.3       |

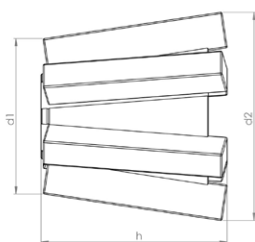

**Tapered milling cutter machined for minimum runoff**

**Materials to be processed**

- Reinforced Concrete
- Concrete
- Cast Iron
- Vitrified Clay

**Field of Application**

- Preparatory milling of laterals
- Removal of intruding laterals

| Article-No. | d1 mm | d2 mm | h mm | Segments | Weight kg |
|-------------|-------|-------|------|----------|-----------|
| 20001 P M14 | 52    | 46    | 25   | 9        | 0.2       |

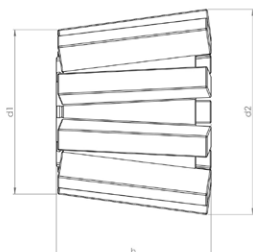

**V-shape milling cutter machined for minimum runoff**

**Materials to be processed**

- Reinforced Concrete
- Concrete
- Cast Iron
- Vitrified Clay

**Field of Application**

- Preparatory milling of laterals
- Removal of intruding laterals

| Article-No. | d1 mm | d2 mm | h mm | Segments | Weight kg |
|-------------|-------|-------|------|----------|-----------|
| 20043 P M14 | 35    | 45    | 42   | 6        | 0.15      |

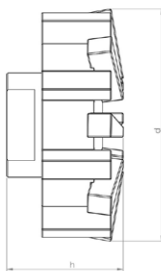

**V-shape milling cutter machined for minimum runout**

**Materials to be processed**

- Reinforced Concrete
- Concrete
- Cast Iron
- Vitrified Clay

**Field of Application**

- Preparatory milling of laterals
- Removal of intruding laterals

| Article-No. | d1<br>mm | d2<br>mm | h<br>mm | Segments | Weight<br>kg |
|-------------|----------|----------|---------|----------|--------------|
| 20039 P M14 | 42       | 52       | 42      | 9        | 0.3          |

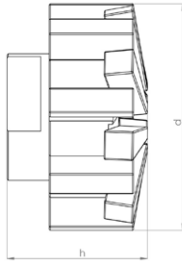

**Inlet milling cutter machined for minimum runout**

**Materials to be processed**

- Reinforced Concrete
- Concrete
- Cast Iron
- Vitrified Clay

**Field of Application**

- Preparatory milling of laterals
- Removal of intruding laterals

| Article-No. | d<br>mm | h<br>mm | Segments | Weight<br>kg |
|-------------|---------|---------|----------|--------------|
| 20015 P M14 | 68      | 33      | 16       | 0.4          |

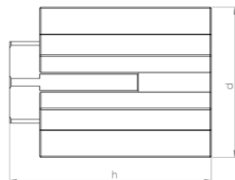

**Inlet milling cutter machined for minimum runout**

**Materials to be processed**

- Reinforced Concrete
- Concrete
- Cast Iron
- Vitrified Clay

**Field of Application**

- Preparatory milling of laterals
- Removal of intruding laterals

| Article-No. | d<br>mm | h<br>mm | Segments | Weight<br>kg |
|-------------|---------|---------|----------|--------------|
| 20047 P M14 | 55      | 35      | 16       | 0.3          |

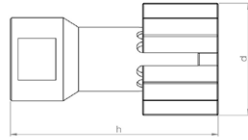

**Finger milling cutter machined for minimum runout**

**Materials to be processed**

- Reinforced Concrete
- Concrete
- Cast Iron
- Vitrified Clay

**Field of Application**

- Preparatory milling of cracks and sockets

| Article-No. | d<br>mm | h<br>mm | Segments | Weight<br>kg |
|-------------|---------|---------|----------|--------------|
| 20048 P M14 | 35      | 50      | 7        | 0.2          |

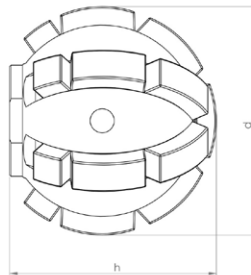

**Finger milling cutter machined for minimum runout**

**Materials to be processed**

- Reinforced Concrete
- Concrete
- Cast Iron
- Vitrified Clay

**Field of Application**

- Preparatory milling of cracks and sockets

| Article-No. | d<br>mm | h<br>mm | Segments | Weight<br>kg |
|-------------|---------|---------|----------|--------------|
| 20003 P M14 | 30      | 55      | 5        | 0.1          |


**Ball milling cutter**

**Materials to be processed**

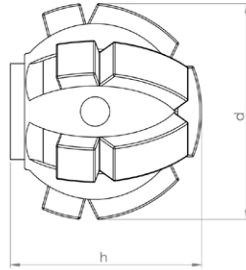
- Reinforced Concrete
- Concrete
- Deposits / Fouling
- Cast Iron
- Vitrified Clay

**Field of Application**

- Preparatory milling of laterals
- Removal of intruding laterals
- Removal of intruding obstacles

| Article-No. | d<br>mm | h<br>mm | Segments | Weight<br>kg |
|-------------|---------|---------|----------|--------------|
| 20020 P M14 | 50      | 46      | 19       | 0.3          |



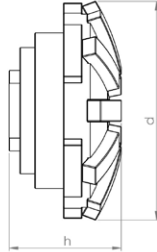

**Ball milling cutter**

**Materials to be processed**

- Reinforced Concrete
- Concrete
- Deposits / Fouling
- Cast Iron
- Vitrified Clay

**Field of Application**

- Preparatory milling of laterals
- Removal of intruding laterals
- Removal of intruding obstacles

| Article-No. | d<br>mm | h<br>mm | Segments | Weight<br>kg |
|-------------|---------|---------|----------|--------------|
| 20021 P M14 | 40      | 37      | 13       | 0.2          |


**N•TEC II®** Mushroom-head milling cutter spring-mounted

**Materials to be processed**

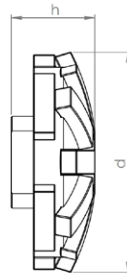
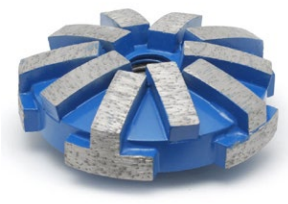
- Reinforced Concrete
- Concrete
- Deposits / Fouling
- Cast Iron
- Vitrified Clay

**Field of Application**

- Removal of intruding laterals
- Surface grinding and milling
- Removal of intruding obstacles
- Milling of offset socket transitions

| Article-No. | Pipe Ø mm | d mm | h mm | Segments | Weight kg |
|-------------|-----------|------|------|----------|-----------|
| 20036 M14   | 200-300   | 80   | 42   | 15       | 0.75      |
| 20037 M14   | 300-450   | 80   | 42   | 15       | 0.75      |
| 20038 M14   | 450-600   | 80   | 42   | 15       | 0.75      |

Note: Milling tools in other segment hardnesses are available on request.

**N•TEC II®** Mushroom-head milling cutter

**Materials to be processed**

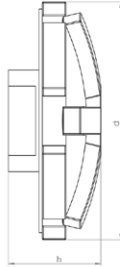
- Reinforced Concrete
- Concrete
- Deposits / Fouling
- Cast Iron
- Vitrified Clay

**Field of Application**

- Removal of intruding laterals
- Surface grinding and milling
- Milling of offset socket transitions

| Article-No. | Pipe Ø mm | d mm | h mm | Segments | Weight kg |
|-------------|-----------|------|------|----------|-----------|
| 20031 M14   | 200-300   | 70   | 30   | 15       | 0.35      |
| 20032 M14   | 300-450   | 70   | 30   | 15       | 0.35      |
| 20033 M14   | 450-600   | 70   | 30   | 15       | 0.35      |

Note: Milling tools in other segment hardnesses are available on request.


**N•TEC II®** Mushroom-head milling cutter

**Materials to be processed**

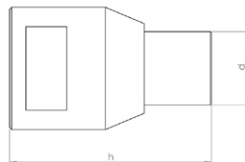
- Reinforced Concrete
- Concrete
- Deposits / Fouling
- Cast Iron
- Vitrified Clay

**Field of Application**

- Removal of intruding laterals
- Surface grinding and milling
- Milling of offset socket transitions

| Article-No. | Pipe Ø mm | d mm | h mm | Segments | Weight kg |
|-------------|-----------|------|------|----------|-----------|
| 21006 M14   | 200-300   | 70   | 30   | 10       | 0.3       |
| 21007 M14   | 300-450   | 70   | 30   | 10       | 0.3       |
| 21008 M14   | 450-600   | 70   | 30   | 10       | 0.3       |

Note: Milling tools in other segment hardnesses are available on request.

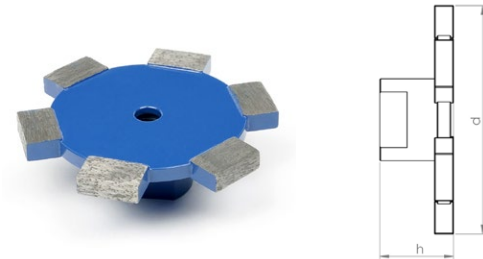
**N•TEC II®** Slot milling cutter

**Materials to be processed**

- Reinforced Concrete
- Concrete
- Cast Iron
- Vitrified Clay

**Field of Application**

- Preparatory milling of cracks and sockets

| Article-No. | d mm | h mm | Segments | Weight kg |
|-------------|------|------|----------|-----------|
| 20009 M14   | 18   | 50   | 1        | 0.1       |

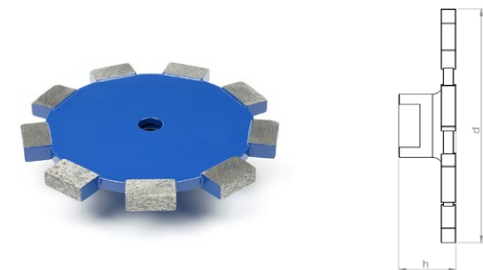

**N•TEC II®** Disk milling cutter

**Materials to be processed**

- Reinforced Concrete
- Concrete
- Vitrified Clay

**Field of Application**

- Milling of circumferential slots on laterals

| Article-No. | d<br>mm | h<br>mm | Segments | Weight<br>kg |
|-------------|---------|---------|----------|--------------|
| 20041 M14   | 85      | 27      | 6        | 0.3          |

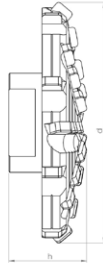
**N•TEC II®** Disk milling cutter

**Materials to be processed**

- Reinforced Concrete
- Concrete
- Vitrified Clay

**Field of Application**

- Milling of circumferential slots on laterals

| Article-No. | d<br>mm | h<br>mm | Segments | Weight<br>kg |
|-------------|---------|---------|----------|--------------|
| 20042 M14   | 110     | 27      | 9        | 0.45         |


**BLACK-LINE** Mushroom-head milling cutter

**Materials to be processed**

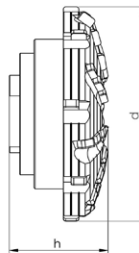
- Concrete
- Deposits / Fouling
- UV CIPP
- Roots
- PVC
- Vitrified Clay
- Felt CIPP

**Note: Use on steel-reinforced concrete will destroy the cutting elements!**

**Field of Application**

- Surface milling
- Removal of intruding obstacles
- Milling of offset socket transitions

| Article-No.  | Pipe Ø mm | d mm | h mm | Segments | Weight kg |
|--------------|-----------|------|------|----------|-----------|
| BL 11426 M14 | 200-450   | 63   | 25   | 28       | 0.2       |
| BL 11401 M14 | 300-600   | 75   | 27   | 32       | 0.25      |

**BLACK-LINE** Mushroom-head milling cutter spring-mounted

**Materials to be processed**

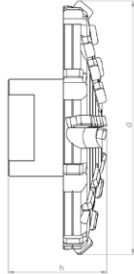
- Concrete
- Deposits / Fouling
- UV CIPP
- Roots
- PVC
- Vitrified Clay
- Felt CIPP

**Note: Use on steel-reinforced concrete will destroy the cutting elements!**

**Field of Application**

- Surface milling
- Removal of intruding obstacles
- Milling of offset socket transitions

| Article-No.  | Pipe Ø mm | d mm | h mm | Segments | Weight kg |
|--------------|-----------|------|------|----------|-----------|
| BL 11458 M14 | 200-300   | 80   | 38   | 32       | 0.7       |
| BL 11459 M14 | 300-450   | 80   | 38   | 32       | 0.7       |
| BL 11460 M14 | 450-600   | 80   | 38   | 32       | 0.7       |


**BLACK-LINE** Mushroom-head milling cutter center cutting

**Materials to be processed**

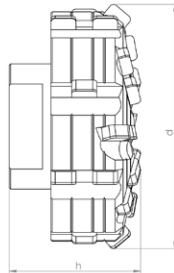
- Concrete
- Deposits / Fouling
- UV CIPP
- Roots
- PVC
- Vitrified Clay
- Felt CIPP

**Note: Use on steel-reinforced concrete will destroy the cutting elements!**

**Field of Application**

- Frontal milling
- Surface milling
- Removal of intruding obstacles
- Milling of offset socket transitions

| Article-No.  | Pipe Ø mm | d mm | h mm | Segments | Weight kg |
|--------------|-----------|------|------|----------|-----------|
| BL 11427 M14 | 200-450   | 65   | 27   | 30       | 0.2       |
| BL 11402 M14 | 300-600   | 75   | 33   | 34       | 0.3       |

**BLACK-LINE** Inlet milling cutter

**Materials to be processed**

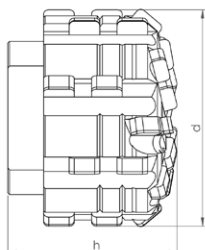
- Concrete
- Deposits / Fouling
- UV CIPP
- Roots
- PVC
- Vitrified Clay
- Felt CIPP

**Note: Use on steel-reinforced concrete will destroy the cutting elements!**

**Field of Application**

- Opening of laterals and inlet lines
- Preparatory milling of laterals
- Removal of intruding laterals
- Removal of intruding obstacles

| Article-No.  | d mm | h mm | Segments | Weight kg |
|--------------|------|------|----------|-----------|
| BL 11409 M14 | 55   | 30   | 28       | 0.35      |


**BLACK-LINE** Inlet milling cutter

**Materials to be processed**

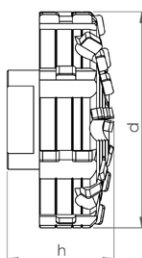
- Concrete
- Deposits / Fouling
- UV CIPP
- Roots
- PVC
- Vitrified Clay
- Felt CIPP

**Note: Use on steel-reinforced concrete will destroy the cutting elements!**

**Field of Application**

- Opening of laterals and inlet lines
- Preparatory milling of laterals
- Removal of intruding laterals
- Removal of intruding obstacles

| Article-No.  | d<br>mm | h<br>mm | Segments | Weight<br>kg |
|--------------|---------|---------|----------|--------------|
| BL 11451 M14 | 45      | 32      | 32       | 0.2          |

**BLACK-LINE** Inlet milling cutter center cutting

**Materials to be processed**

- Concrete
- Deposits / Fouling
- UV CIPP
- Roots
- PVC
- Vitrified Clay
- Felt CIPP

**Note: Use on steel-reinforced concrete will destroy the cutting elements!**

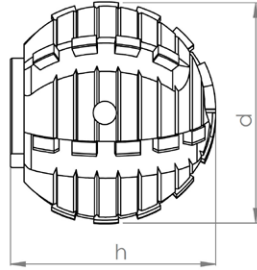
**Field of Application**

- Opening of laterals and inlet lines
- Preparatory milling of laterals
- Removal of intruding laterals
- Frontal milling
- Surface milling
- Removal of intruding obstacles

| Article-No.  | d<br>mm | h<br>mm | Segments | Weight<br>kg |
|--------------|---------|---------|----------|--------------|
| BL 11452 M14 | 70      | 32      | 34       | 0.4          |



**BLACK-LINE** Ball milling cutter



**Materials to be processed**

- UV CIPP
- PVC
- Roots
- Felt CIPP

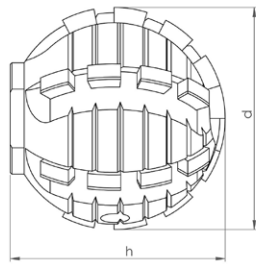
**Note: Only suitable for processing CIPP liners and PVC and for cutting roots!**

**Field of Application**

- Opening of laterals and inlet lines
- Removal of intruding obstacles

| Article-No.  | d mm | h mm | Segments | Weight kg |
|--------------|------|------|----------|-----------|
| BL 11410 M14 | 50   | 45   | 30       | 0.4       |

**BLACK-LINE** Ball milling cutter



**Materials to be processed**

- UV CIPP
- PVC
- Roots
- Felt CIPP

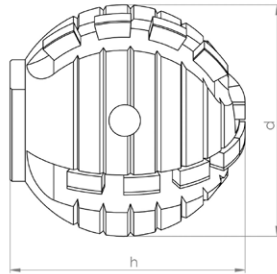
**Note: Only suitable for processing CIPP liners and PVC and for cutting roots!**

**Field of Application**

- Opening of laterals and inlet lines
- Removal of intruding obstacles

| Article-No.  | d mm | h mm | Segments | Weight kg |
|--------------|------|------|----------|-----------|
| BL 11446 M14 | 40   | 42   | 26       | 0.25      |




**BLACK-LINE** Ball milling cutter

**Materials to be processed**

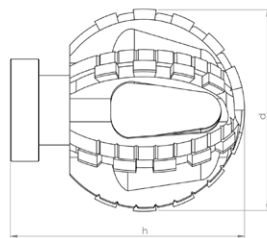
- UV CIPP
- Roots
- PVC
- Felt CIPP

**Note: Only suitable for processing CIPP liners and PVC and for cutting roots!**

**Field of Application**

- Opening of laterals and inlet lines
- Removal of intruding obstacles

| Article-No.  | d mm | h mm | Segments | Weight kg |
|--------------|------|------|----------|-----------|
| BL 11414 M14 | 40   | 42   | 18       | 0.25      |

**BLACK-LINE** Ball milling cutter Type ProView®

**Materials to be processed**

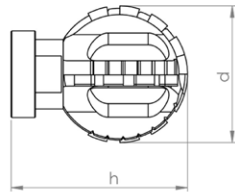
- UV CIPP
- Roots
- PVC
- Felt CIPP

**Note: Only suitable for processing CIPP liners and PVC and for cutting roots!**

**Field of Application**

- Opening of laterals and inlet lines
- Removal of intruding obstacles

| Article-No.  | d mm | h mm | Segments | Weight kg |
|--------------|------|------|----------|-----------|
| BL 11116 M14 | 50   | 57   | 30       | 0.2       |


**BLACK-LINE** Ball milling cutter Type ProView®

**Materials to be processed**

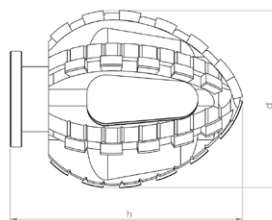
- UV CIPP
- PVC
- Roots
- Felt CIPP

**Note: Only suitable for processing CIPP liners and PVC and for cutting roots!**

**Field of Application**

- Opening of laterals and inlet lines
- Removal of intruding obstacles

| Article-No.  | d<br>mm | h<br>mm | Segments | Weight<br>kg |
|--------------|---------|---------|----------|--------------|
| BL 11117 M14 | 40      | 51      | 18       | 0.15         |

**BLACK-LINE** Double-cone milling cutter Type ProView®

**Materials to be processed**

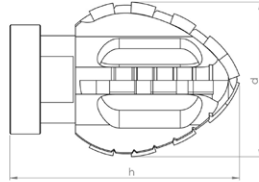
- UV CIPP
- PVC
- Roots
- Felt CIPP

**Note: Only suitable for processing CIPP liners and PVC and for cutting roots!**

**Field of Application**

- Opening of laterals and inlet lines
- Removal of intruding obstacles

| Article-No.  | d<br>mm | h<br>mm | Segments | Weight<br>kg |
|--------------|---------|---------|----------|--------------|
| BL 11113 M14 | 45      | 60      | 34       | 0.16         |


**BLACK-LINE** Double-cone milling cutter Type ProView®

**Materials to be processed**

- UV CIPP
- PVC
- Roots
- Felt CIPP

**Note: Only suitable for processing CIPP liners and PVC and for cutting roots!**

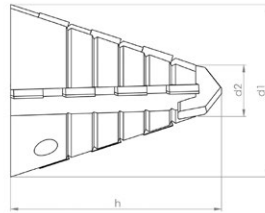
**Field of Application**

- Opening of laterals and inlet lines
- Removal of intruding obstacles

| Article-No.  | d<br>mm | h<br>mm | Segments | Weight<br>kg |
|--------------|---------|---------|----------|--------------|
| BL 11118 M14 | 36      | 53      | 16       | 0.15         |



**linerCUT Pro® Tapered milling cutter with tungsten carbide tip**



**Materials to be processed**

- UV CIPP
- Felt CIPP
- PVC

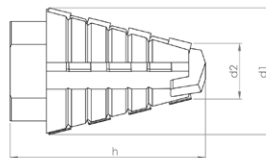
**Note: Only suitable for processing CIPP liners and PVC!**

**Field of Application**

- Opening of laterals and inlet lines

| Article-No.  | d1 mm | d2 mm | h mm | Segments | Weight kg |
|--------------|-------|-------|------|----------|-----------|
| BL 11463 M14 | 40    | 18    | 47   | 14       | 0.14      |

**linerCUT Pro® Tapered milling cutter with tungsten carbide tip**



**Materials to be processed**

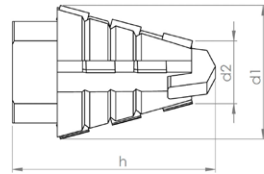
- UV CIPP
- Felt CIPP
- PVC

**Note: Only suitable for processing CIPP liners and PVC!**

**Field of Application**

- Opening of laterals and inlet lines

| Article-No.  | d1 mm | d2 mm | h mm | Segments | Weight kg |
|--------------|-------|-------|------|----------|-----------|
| BL 11437 M14 | 28    | 18    | 45   | 14       | 0.08      |


**linerCUT Pro® Tapered milling cutter with tungsten carbide tip**

**Materials to be processed**

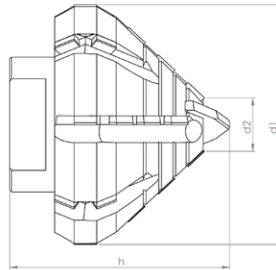
- UV CIPP
- Felt CIPP
- PVC

**Note: Only suitable for processing CIPP liners and PVC!**

**Field of Application**

- Opening of laterals and inlet lines

| Article-No.  | d1 mm | d2 mm | h mm | Segments | Weight kg |
|--------------|-------|-------|------|----------|-----------|
| BL 11438 M14 | 30    | 18    | 35   | 10       | 0.06      |

**linerCUT Pro® Taper/cylinder milling cutter with tungsten carbide tip**

**Materials to be processed**

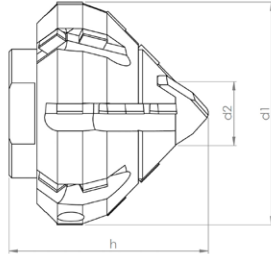
- UV CIPP
- Felt CIPP
- PVC

**Note: Only suitable for processing CIPP liners and PVC!**

**Field of Application**

- Opening of laterals and inlet lines

| Article-No.  | d1 mm | d2 mm | h mm | Segments | Weight kg |
|--------------|-------|-------|------|----------|-----------|
| BL 11441 M14 | 55    | 20    | 46   | 24       | 0.3       |


**linerCUT Pro® Taper/cylinder milling cutter with tungsten carbide tip**

**Materials to be processed**

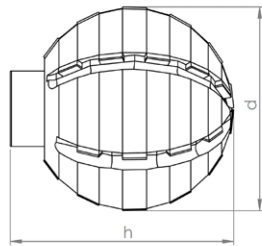
- UV CIPP
- Felt CIPP
- PVC

**Note: Only suitable for processing CIPP liners and PVC!**

**Field of Application**

- Opening of laterals and inlet lines

| Article-No.  | d1<br>mm | d2<br>mm | h<br>mm | Segments | Weight<br>kg |
|--------------|----------|----------|---------|----------|--------------|
| BL 11439 M14 | 45       | 20       | 40      | 22       | 0.2          |

**linerCUT Pro® Ball milling cutter**

**Materials to be processed**

- UV CIPP
- Felt CIPP
- PVC

**Note: Only suitable for processing CIPP liners and PVC!**

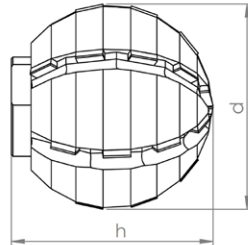
**Field of Application**

- Opening of laterals and inlet lines

| Article-No.  | d<br>mm | h<br>mm | Segments | Weight<br>kg |
|--------------|---------|---------|----------|--------------|
| BL 11445 M14 | 60      | 65      | 30       | 0.8          |



**linerCUT Pro® Ball milling cutter**



**Materials to be processed**

- UV CIPP
- Felt CIPP
- PVC

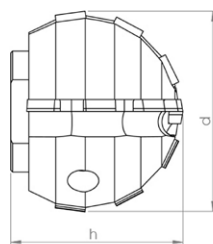
**Note: Only suitable for processing CIPP liners and PVC!**

**Field of Application**

- Opening of laterals and inlet lines

| Article-No.  | d mm | h mm | Segments | Weight kg |
|--------------|------|------|----------|-----------|
| BL 11444 M14 | 50   | 55   | 24       | 0.5       |

**linerCUT Pro® Ball milling cutter**



**Materials to be processed**

- UV CIPP
- Felt CIPP
- PVC

**Note: Only suitable for processing CIPP liners and PVC!**

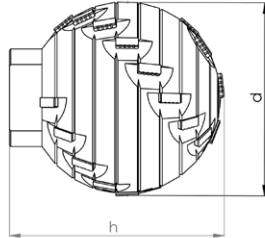
**Field of Application**

- Opening of laterals and inlet lines

| Article-No.  | d mm | h mm | Segments | Weight kg |
|--------------|------|------|----------|-----------|
| BL 11443 M14 | 40   | 36   | 12       | 0.2       |



**linerCUT Pro<sup>®</sup> 2.0 Ball milling cutter**



**Materials to be processed**

- UV CIPP
- Felt CIPP
- PVC

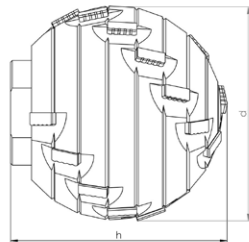
**Note: Only suitable for processing CIPP liners and PVC!**

**Field of Application**

- Opening of laterals and inlet lines

| Article-No.  | d mm | h mm | Segments | Weight kg |
|--------------|------|------|----------|-----------|
| BL 11450 M14 | 60   | 65   | 28       | 0.85      |

**linerCUT Pro<sup>®</sup> 2.0 Ball milling cutter**



**Materials to be processed**

- UV CIPP
- Felt CIPP
- PVC

**Note: Only suitable for processing CIPP liners and PVC!**

**Field of Application**

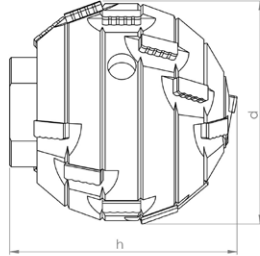
- Opening of laterals and inlet lines

| Article-No.  | d mm | h mm | Segments | Weight kg |
|--------------|------|------|----------|-----------|
| BL 11449 M14 | 50   | 52   | 22       | 0.5       |





**linerCUT Pro<sup>®</sup> 2.0 Ball milling cutter**



**Materials to be processed**

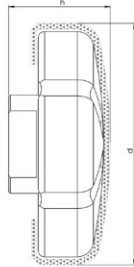
- UV CIPP
- Felt CIPP
- PVC

**Note: Only suitable for processing CIPP liners and PVC!**

**Field of Application**

- Opening of laterals and inlet lines

| Article-No.  | d<br>mm | h<br>mm | Segments | Weight<br>kg |
|--------------|---------|---------|----------|--------------|
| BL 11448 M14 | 40      | 40      | 18       | 0.25         |


**D•GRIT** Inlet milling cutter

**Materials to be processed**

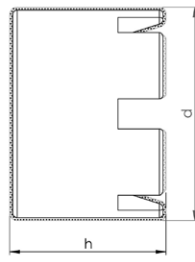
- UV CIPP
- Felt CIPP
- PVC

**Note: Only suitable for processing CIPP liners and PVC!**

**Field of Application**

- Opening of laterals and inlet lines
- CIPP liner finishing

| Article-No. | d<br>mm | h<br>mm | Grit    | Weight<br>kg |
|-------------|---------|---------|---------|--------------|
| 70011 M14   | 70      | 30      | Diamond | 0.5          |

**D•GRIT** Crown milling cutter

**Materials to be processed**

- UV CIPP
- Felt CIPP
- PVC

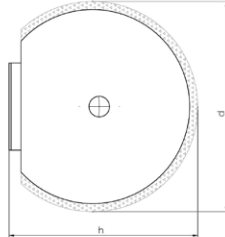
**Note: Only suitable for processing CIPP liners and PVC!**

**Field of Application**

- Opening of laterals and inlet lines
- CIPP liner finishing

| Article-No. | d<br>mm | h<br>mm | Grit    | Weight<br>kg |
|-------------|---------|---------|---------|--------------|
| 70006       | 70      | 50      | Diamond | 0.6          |

**Note: Tool can only be used with matching adapter 90173!**


**D•GRIT** Ball milling cutter

**Materials to be processed**

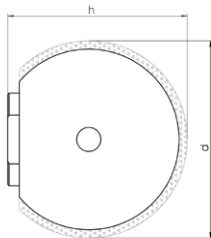
- UV CIPP
- Felt CIPP
- PVC

**Note: Only suitable for processing CIPP liners and PVC!**

**Field of Application**

- Opening of laterals and inlet lines
- CIPP liner finishing

| Article-No. | d<br>mm | h<br>mm | Grit    | Weight<br>kg |
|-------------|---------|---------|---------|--------------|
| 70002 M14   | 50      | 48      | Diamond | 0.45         |

**D•GRIT** Ball milling cutter

**Materials to be processed**

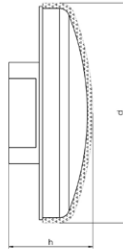
- UV CIPP
- Felt CIPP
- PVC

**Note: Only suitable for processing CIPP liners and PVC!**

**Field of Application**

- Opening of laterals and inlet lines
- CIPP liner finishing

| Article-No. | d<br>mm | h<br>mm | Grit    | Weight<br>kg |
|-------------|---------|---------|---------|--------------|
| 70001 M14   | 40      | 38      | Diamond | 0.25         |

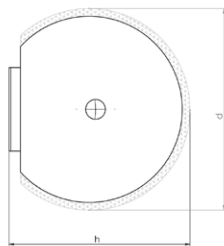

**HM•LINE** Mushroom-head milling cutter

**Materials to be processed**

- UV CIPP
- Roots
- PVC
- Felt CIPP

**Field of Application**

- Removal of intruding obstacles
- CIPP liner finishing

| Article-No. | d<br>mm | h<br>mm | Grit    | Weight<br>kg |
|-------------|---------|---------|---------|--------------|
| 50003 M14   | 67      | 30      | Carbide | 0.3          |

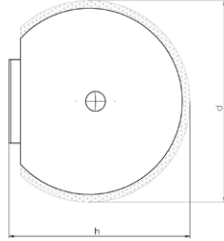
**HM•LINE** Ball milling cutter

**Materials to be processed**

- UV CIPP
- Roots
- PVC
- Felt CIPP

**Field of Application**

- Opening of laterals and inlet lines
- Removal of intruding obstacles
- CIPP liner finishing

| Article-No. | d<br>mm | h<br>mm | Grit    | Weight<br>kg |
|-------------|---------|---------|---------|--------------|
| 50001 M14   | 50      | 50      | Carbide | 0.6          |

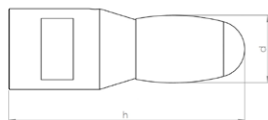

**HM•LINE** Ball milling cutter

**Materials to be processed**

- UV CIPP
- PVC
- Roots
- Felt CIPP

**Field of Application**

- Opening of laterals and inlet lines
- Removal of intruding obstacles
- CIPP liner finishing

| Article-No. | d<br>mm | h<br>mm | Grit    | Weight<br>kg |
|-------------|---------|---------|---------|--------------|
| 50002 M14   | 40      | 42      | Carbide | 0.3          |


**VHM•LINE** oval shaped

**Materials to be processed**

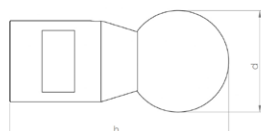
- Cast Iron
- Steel

**Note: Use on concrete or vitrified clay will destroy the cutting elements!**

**Field of Application**

- Removal of intruding obstacles

| Article-No. | d mm | h mm | Segments | Weight kg |
|-------------|------|------|----------|-----------|
| 60007 M14   | 16   | 62   | 1        | 0.15      |

**VHM•LINE** ball shaped

**Materials to be processed**

- Cast Iron
- Steel

**Note: Use on concrete or vitrified clay will destroy the cutting elements!**

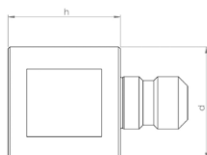
**Field of Application**

- Removal of intruding obstacles

| Article-No. | d mm | h mm | Segments | Weight kg |
|-------------|------|------|----------|-----------|
| 60008 M14   | 25   | 60   | 1        | 0.15      |



### Extension 30 mm



#### Description

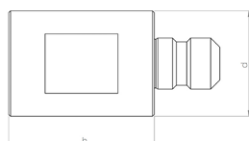
CNC fabricated tool extension for increased working radius of robot arm.

#### Specification

Stainless steel

| Article-No. | d mm | h mm | Weight kg |
|-------------|------|------|-----------|
| 90120 M14   | 30   | 30   | 0.15      |

### Extension 40 mm



#### Description

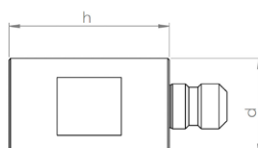
CNC fabricated tool extension for increased working radius of robot arm.

#### Specification

Stainless steel

| Article-No. | d mm | h mm | Weight kg |
|-------------|------|------|-----------|
| 90121 M14   | 30   | 40   | 0.2       |

### Extension 50 mm



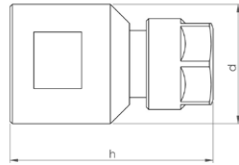
#### Description

CNC fabricated tool extension for increased working radius of robot arm.

#### Specification

Stainless steel

| Article-No. | d mm | h mm | Weight kg |
|-------------|------|------|-----------|
| 90122 M14   | 30   | 50   | 0.25      |

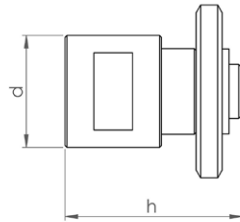

**Adapter for mounting commercially available shank tools Ø 6 mm**

**Description**

CNC fabricated collet chuck adapter for mounting commercially available shank tools.  
 e.g. burrs, brushes, flap grinders etc...  
 Mounting: Shank Ø 6-6,5 mm

**Specification**

Stainless steel

| Article-No. | d mm | h mm | Weight kg |
|-------------|------|------|-----------|
| 90171 M14   | 30   | 40   | 0.1       |

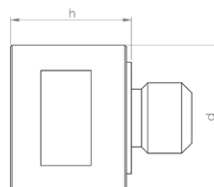
**Adapter for mounting of 3 cutting discs**

**Description**

CNC fabricated adapter for mounting of 3 cutting discs.  
 Mounting shaft Ø 22,2 mm  
 includes cutting discs and locking disc  
**NOTE:** This adapter cannot be used to mount a single cutting disc!

**Specification**

Stainless steel

| Article-No. | d mm | h mm | Weight kg |
|-------------|------|------|-----------|
| 90168 M14   | 30   | 46   | 0.2       |

**Adapter for mounting of brushes and cutting discs**

**Description**

CNC fabricated adapter for mounting of brushes and cutting discs.  
 Thread: M14 (14 mm O.D.)  
 Centering ring for cutting disc: Ø 22,2 mm  
**NOTE:** When mounting wheel brushes or cutting discs, a locking disc is also required!

**Specification**

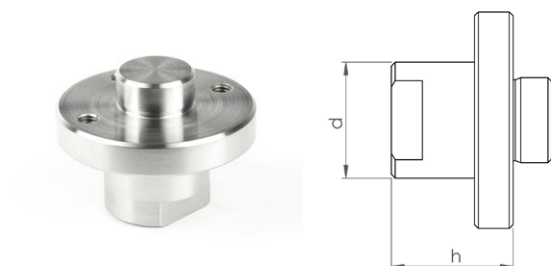
Stainless steel

| Article-No. | d mm | h mm | Weight kg |
|-------------|------|------|-----------|
| 90112 M14   | 30   | 25   | 0.11      |





### Adapter for mounting D-GRIT milling tools



#### Description

CNC fabricated adapter for mounting **D-GRIT** milling tools  
**NOTE:** This adapter is only required for specific D-GRIT milling tools!

#### Specification

Stainless steel

| Article-No. | d mm | h mm | Weight kg |
|-------------|------|------|-----------|
| 90173 M14   | 56   | 32   | 0.3       |

### Locking disc for mounting of wheel brushes and cutting discs



#### Description

Thread: M14 (14 mm O.D.)

**NOTE:** Wheel brushes and cutting discs must be mounted using matching adapters!

#### Specification

Steel, burnished

| Article-No. | d mm | h mm | Weight kg |
|-------------|------|------|-----------|
| SP 90110    | 45   | 8,5  | 0.07      |

### Mounted point-cylindrical



#### Description

Corundum mounted point, for working on steel and cast iron.  
**NOTE:** Only useable with adapter!

#### Specification

Corundum

| Article-No. | d mm | h mm | Weight kg |
|-------------|------|------|-----------|
| 81002       | 32   | 32   | 0.08      |



### Cup wheel Ø 80 mm



#### Description

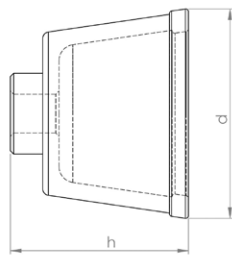
Corundum cup wheel, for working on steel and cast iron.  
 Mounting hole Ø 22,2 mm  
**NOTE:** May be used only with matching adapter and locking disc!

#### Specification

Corundum

| Article-No. | d mm | h mm | Weight kg |
|-------------|------|------|-----------|
| 81003       | 80   | 28   | 0.2       |

### Cup brush Ø 65 mm



#### Description

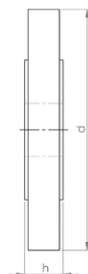
Premium rotary wire brush for finishing work on CIPP liners and PVC.  
 Mounting hole M14 (14 mm thread O.D.)  
**NOTE:** May be used only with matching adapter!

#### Specification

Wire thickness: Ø 0,8 mm

| Article-No. | d mm | h mm | Weight kg |
|-------------|------|------|-----------|
| 80020       | 65   | 50   | 0.25      |

### Wheel brush Ø 100 mm



#### Description

Premium rotary wire brush for finishing work on CIPP liners and PVC.  
 Mounting hole Ø 22,2 mm  
**NOTE:** May be used only with matching adapter and locking disc!

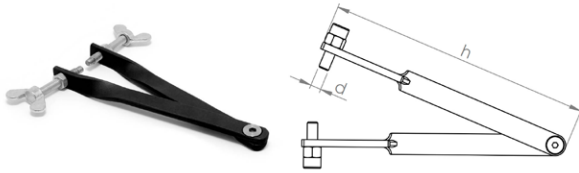
#### Specification

Wire thickness: Ø 0,5 mm

| Article-No. | d mm | h mm | Weight kg |
|-------------|------|------|-----------|
| 80018       | 100  | 15   | 0.2       |



### Pin-tipped tongs for safe tool changeover



#### Description

The tongs are fitted with pin (with adjustable gripping depth) which are inserted into the gripping holes of the milling tools, permitting safe changeover without risking damage to the tooling.


#### Specification

Steel

| Article-No. | d<br>mm | h<br>mm | Weight<br>kg |
|-------------|---------|---------|--------------|
| 92002       | 5       | 150     | 0.125        |



**N•TEC II<sup>®</sup>**  
PREMIUM




Premium Diamond Tools for High-Performance Material Removal and Long Service Life

**Materials to be processed**

- Reinforced Concrete
- Concrete
- Deposits / Fouling
- Cast Iron
- Vitrified Clay

Page 42

**N•TEC II<sup>®</sup>**



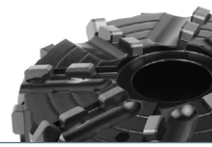
Field-Proven Standard Diamond Tools with Outstanding Value for Purchase Investment

**Materials to be processed**

- Reinforced Concrete
- Concrete
- Deposits / Fouling
- Cast Iron
- Vitrified Clay

Page 48

**BLACK•LINE**




High-Tech Milling Tools made of PCD with Unbeatable Cutting and Stock Removal Performance for Almost Every Material

**Materials to be processed**

- Concrete
- UV CIPP
- Deposits / Fouling
- Roots
- PVC
- Vitrified Clay
- Felt CIPP

Page 54

**linerCUT Pro<sup>®</sup>**




Absolutely Smooth-Running and Precise PCD Cutting Tools for Opening CIPP - Optimized for UV CIPP -

**Materials to be processed**

- UV CIPP
- PVC
- Felt CIPP

Page 60

**linerCUT Pro<sup>®</sup> 2.0**




Absolutely Smooth-Running and Precise PCD Cutting Tools for Opening CIPP - All Kinds of CIPP and PVC -

**Materials to be processed**

- UV CIPP
- PVC
- Felt CIPP

Page 63

**D•GRIT**



Milling Tools with Diamond Granules for Opening CIPP - Optimal for UV CIPP and Lined Cast Iron Pipes -

**Materials to be processed**

- UV CIPP
- PVC
- Felt CIPP

Page 64

**HM•LINE**



Cost-Efficient Milling Tools with Carbide Granulate Tipping for Opening and Reworking CIPP

**Materials to be processed**

- UV CIPP
- Roots
- PVC
- Felt CIPP

Page 65



Special Milling Tools for Processing Steel and Cast Iron

**Materials to be processed**

- Cast Iron
- Steel

Page 67



Functional Accessories

High-quality brushes, adapters, extensions, etc.

Page 68


**Mushroom-head milling cutter machined for minimum runout**

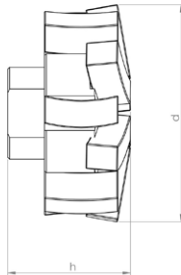
**Materials to be processed**

- Reinforced Concrete
- Concrete
- Deposits / Fouling
- Cast Iron
- Vitrified Clay

**Field of Application**

- Removal of intruding laterals
- Surface grinding and milling
- Milling of offset socket transitions

| Article-No. | Pipe Ø mm | d mm | h mm | Segments | Weight kg |
|-------------|-----------|------|------|----------|-----------|
| 20024 P M14 | 200-300   | 70   | 30   | 18       | 0.35      |
| 20025 P M14 | 300-450   | 70   | 30   | 18       | 0.35      |
| 20026 P M14 | 450-600   | 70   | 30   | 18       | 0.35      |

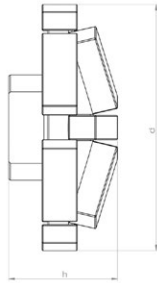

**Mushroom-head milling cutter machined for minimum runout**

**Materials to be processed**

- Reinforced Concrete
- Concrete
- Deposits / Fouling
- Cast Iron
- Vitrified Clay

**Field of Application**

- Removal of intruding laterals
- Surface grinding and milling
- Milling of offset socket transitions

| Article-No. | d mm | h mm | Segments | Weight kg |
|-------------|------|------|----------|-----------|
| 20040 P M14 | 45   | 30   | 12       | 0.12      |

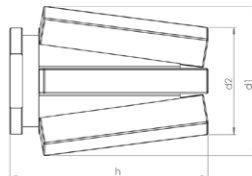

**Mushroom-head milling cutter machined for minimum runout**

**Materials to be processed**

- Reinforced Concrete
- Concrete
- Deposits / Fouling
- Cast Iron
- Vitrified Clay

**Field of Application**

- Removal of intruding laterals
- Surface grinding and milling
- Milling of offset socket transitions

| Article-No. | d mm | h mm | Segments | Weight kg |
|-------------|------|------|----------|-----------|
| 20050 P M14 | 70   | 30   | 12       | 0.35      |

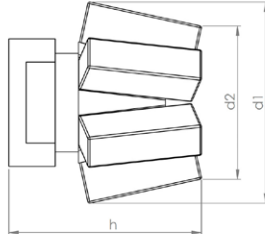

**Tapered milling cutter machined for minimum runout**

**Materials to be processed**

- Reinforced Concrete
- Concrete
- Cast Iron
- Vitrified Clay

**Field of Application**

- Preparatory milling of laterals
- Removal of intruding laterals

| Article-No. | d1 mm | d2 mm | h mm | Segments | Weight kg |
|-------------|-------|-------|------|----------|-----------|
| 20013 P M14 | 38    | 28    | 53   | 6        | 0.15      |

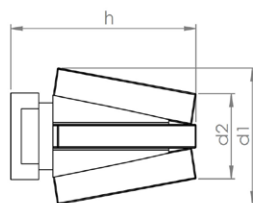

**Tapered milling cutter machined for minimum runout**

**Materials to be processed**

- Reinforced Concrete
- Concrete
- Cast Iron
- Vitrified Clay

**Field of Application**

- Preparatory milling of laterals
- Removal of intruding laterals

| Article-No. | d1 mm | d2 mm | h mm | Segments | Weight kg |
|-------------|-------|-------|------|----------|-----------|
| 20027 P M14 | 36    | 28    | 32   | 6        | 0.1       |


**Tapered milling cutter machined for minimum runout**

**Materials to be processed**

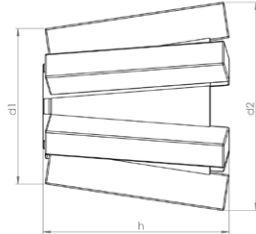
- Reinforced Concrete
- Concrete
- Cast Iron
- Vitrified Clay

**Field of Application**

- Preparatory milling of laterals
- Removal of intruding laterals
- Preparatory milling of cracks and sockets

| Article-No. | d1 mm | d2 mm | h mm | Segments | Weight kg |
|-------------|-------|-------|------|----------|-----------|
| 20017 P M14 | 32    | 23    | 53   | 4        | 0.1       |



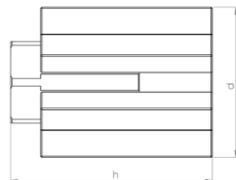

**V-shape milling cutter machined for minimum runout**

**Materials to be processed**

- Reinforced Concrete
- Concrete
- Cast Iron
- Vitrified Clay

**Field of Application**

- Preparatory milling of laterals
- Removal of intruding laterals

| Article-No. | d1<br>mm | d2<br>mm | h<br>mm | Segments | Weight<br>kg |
|-------------|----------|----------|---------|----------|--------------|
| 20043 P M14 | 35       | 45       | 42      | 6        | 0.15         |

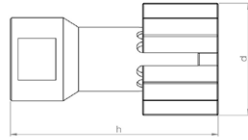

**Finger milling cutter machined for minimum runout**

**Materials to be processed**

- Reinforced Concrete
- Concrete
- Cast Iron
- Vitrified Clay

**Field of Application**

- Preparatory milling of cracks and sockets

| Article-No. | d<br>mm | h<br>mm | Segments | Weight<br>kg |
|-------------|---------|---------|----------|--------------|
| 20048 P M14 | 35      | 50      | 7        | 0.2          |

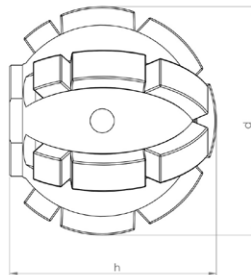

**Finger milling cutter machined for minimum runout**

**Materials to be processed**

- Reinforced Concrete
- Concrete
- Cast Iron
- Vitrified Clay

**Field of Application**

- Preparatory milling of cracks and sockets

| Article-No. | d<br>mm | h<br>mm | Segments | Weight<br>kg |
|-------------|---------|---------|----------|--------------|
| 20003 P M14 | 30      | 55      | 5        | 0.1          |

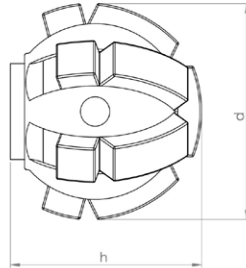

**Ball milling cutter**

**Materials to be processed**

- Reinforced Concrete
- Concrete
- Deposits / Fouling
- Cast Iron
- Vitrified Clay

**Field of Application**

- Preparatory milling of laterals
- Removal of intruding laterals
- Removal of intruding obstacles

| Article-No. | d<br>mm | h<br>mm | Segments | Weight<br>kg |
|-------------|---------|---------|----------|--------------|
| 20020 P M14 | 50      | 46      | 19       | 0.3          |


**Ball milling cutter**

**Materials to be processed**

- Reinforced Concrete
- Concrete
- Deposits / Fouling
- Cast Iron
- Vitrified Clay

**Field of Application**

- Preparatory milling of laterals
- Removal of intruding laterals
- Removal of intruding obstacles

| Article-No. | d<br>mm | h<br>mm | Segments | Weight<br>kg |
|-------------|---------|---------|----------|--------------|
| 20021 P M14 | 40      | 37      | 13       | 0.2          |


**N•TEC II®** Mushroom-head milling cutter

**Materials to be processed**

- Reinforced Concrete
- Concrete
- Deposits / Fouling
- Cast Iron
- Vitrified Clay

**Field of Application**

- Removal of intruding laterals
- Surface grinding and milling
- Milling of offset socket transitions

| Article-No. | Pipe Ø mm | d mm | h mm | Segments | Weight kg |
|-------------|-----------|------|------|----------|-----------|
| 20031 M14   | 200-300   | 70   | 30   | 15       | 0.35      |
| 20032 M14   | 300-450   | 70   | 30   | 15       | 0.35      |
| 20033 M14   | 450-600   | 70   | 30   | 15       | 0.35      |

**Note: Milling tools in other segment hardnesses are available on request.**

**N•TEC II®** Mushroom-head milling cutter

**Materials to be processed**

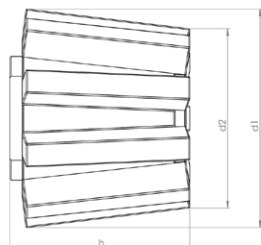
- Reinforced Concrete
- Concrete
- Deposits / Fouling
- Cast Iron
- Vitrified Clay

**Field of Application**

- Removal of intruding laterals
- Surface grinding and milling
- Milling of offset socket transitions

| Article-No. | Pipe Ø mm | d mm | h mm | Segments | Weight kg |
|-------------|-----------|------|------|----------|-----------|
| 20006 M14   | 200-300   | 70   | 30   | 10       | 0.3       |
| 20007 M14   | 300-450   | 70   | 30   | 10       | 0.3       |
| 20008 M14   | 450-600   | 70   | 30   | 10       | 0.3       |

**Note: Milling tools in other segment hardnesses are available on request.**


**N•TEC II®** Tapered milling cutter

**Materials to be processed**

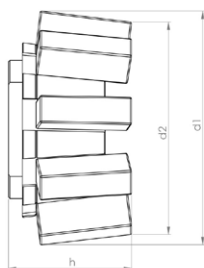
- Reinforced Concrete
- Concrete
- Cast Iron
- Vitrified Clay

**Field of Application**

- Preparatory milling of laterals
- Removal of intruding laterals

| Article-No. | d1 mm | d2 mm | h mm | Segments | Weight kg |
|-------------|-------|-------|------|----------|-----------|
| 20004 M14   | 50    | 42    | 40   | 9        | 0.3       |

Note: Milling tools in other segment hardnesses are available on request.

**N•TEC II®** Tapered milling cutter

**Materials to be processed**

- Reinforced Concrete
- Concrete
- Cast Iron
- Vitrified Clay

**Field of Application**

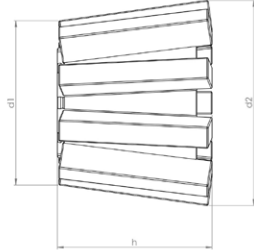
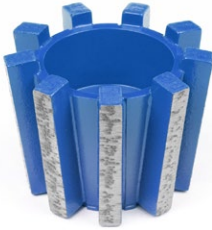
- Preparatory milling of laterals
- Removal of intruding laterals

| Article-No. | d1 mm | d2 mm | h mm | Segments | Weight kg |
|-------------|-------|-------|------|----------|-----------|
| 20001 M14   | 50    | 45    | 25   | 9        | 0.2       |

Note: Milling tools in other segment hardnesses are available on request.



**N•TEC II®** V-shape milling cutter



**Materials to be processed**

- Reinforced Concrete
- Concrete
- Cast Iron
- Vitrified Clay

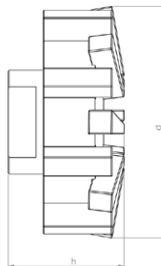
**Field of Application**

- Preparatory milling of laterals
- Removal of intruding laterals

| Article-No. | d1 mm | d2 mm | h mm | Segments | Weight kg |
|-------------|-------|-------|------|----------|-----------|
| 20039 M14   | 42    | 52    | 40   | 9        | 0.3       |

Note: Milling tools in other segment hardnesses are available on request.

**N•TEC II®** Inlet milling cutter



**Materials to be processed**

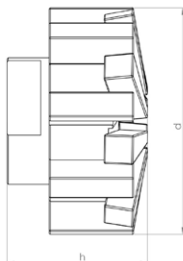
- Reinforced Concrete
- Concrete
- Cast Iron
- Vitrified Clay

**Field of Application**

- Preparatory milling of laterals
- Removal of intruding laterals

| Article-No. | d mm | h mm | Segments | Weight kg |
|-------------|------|------|----------|-----------|
| 20015 M14   | 68   | 33   | 16       | 0.4       |

Note: Milling tools in other segment hardnesses are available on request.


**N•TEC II®** Inlet milling cutter

**Materials to be processed**

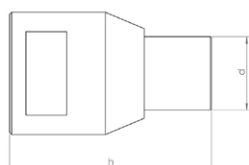
- Reinforced Concrete
- Concrete
- Cast Iron
- Vitrified Clay

**Field of Application**

- Preparatory milling of laterals
- Removal of intruding laterals

| Article-No. | d<br>mm | h<br>mm | Segments | Weight<br>kg |
|-------------|---------|---------|----------|--------------|
| 20047 M14   | 55      | 35      | 16       | 0.3          |

Note: Milling tools in other segment hardnesses are available on request.

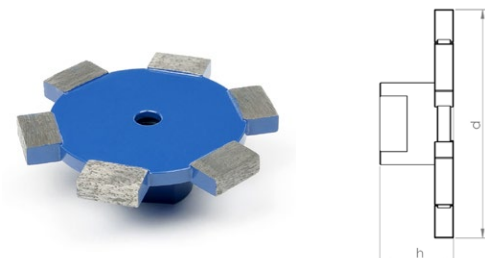
**N•TEC II®** Slot milling cutter

**Materials to be processed**

- Reinforced Concrete
- Concrete
- Cast Iron
- Vitrified Clay

**Field of Application**

- Preparatory milling of cracks and sockets

| Article-No. | d<br>mm | h<br>mm | Segments | Weight<br>kg |
|-------------|---------|---------|----------|--------------|
| 20009 M14   | 18      | 50      | 1        | 0.1          |

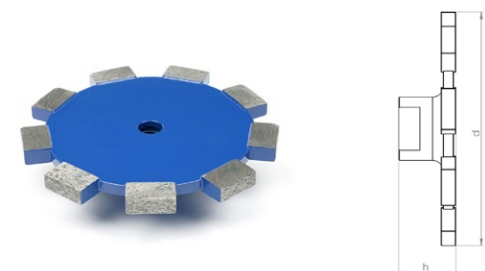

**N•TEC II** Disk milling cutter

**Materials to be processed**

- Reinforced Concrete
- Concrete
- Vitrified Clay

**Field of Application**

- Milling of circumferential slots on laterals

| Article-No. | d<br>mm | h<br>mm | Segments | Weight<br>kg |
|-------------|---------|---------|----------|--------------|
| 20041 M14   | 85      | 27      | 6        | 0.3          |

**N•TEC II** Disk milling cutter

**Materials to be processed**

- Reinforced Concrete
- Concrete
- Vitrified Clay

**Field of Application**

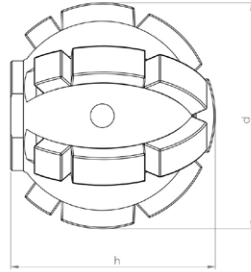
- Milling of circumferential slots on laterals

| Article-No. | d<br>mm | h<br>mm | Segments | Weight<br>kg |
|-------------|---------|---------|----------|--------------|
| 20042 M14   | 110     | 27      | 9        | 0.45         |





**N•TEC II®** Ball milling cutter



**Materials to be processed**

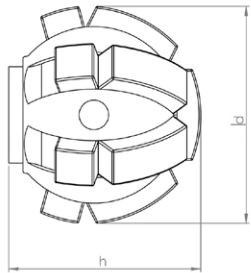
- Reinforced Concrete
- Concrete
- Deposits / Fouling
- Cast Iron
- Vitrified Clay

**Field of Application**

- Preparatory milling of laterals
- Removal of intruding laterals
- Removal of intruding obstacles

| Article-No. | d mm | h mm | Segments | Weight kg |
|-------------|------|------|----------|-----------|
| 20020 M14   | 50   | 46   | 19       | 0.3       |

**N•TEC II®** Ball milling cutter



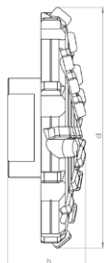
**Materials to be processed**

- Reinforced Concrete
- Concrete
- Deposits / Fouling
- Cast Iron
- Vitrified Clay

**Field of Application**

- Preparatory milling of laterals
- Removal of intruding laterals
- Removal of intruding obstacles

| Article-No. | d mm | h mm | Segments | Weight kg |
|-------------|------|------|----------|-----------|
| 20021 M14   | 40   | 37   | 13       | 0.2       |


**BLACK-LINE** Mushroom-head milling cutter

**Materials to be processed**

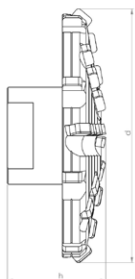
- Concrete
- Deposits / Fouling
- UV CIPP
- Roots
- PVC
- Vitrified Clay
- Felt CIPP

**Note: Use on steel-reinforced concrete will destroy the cutting elements!**

**Field of Application**

- Surface milling
- Removal of intruding obstacles
- Milling of offset socket transitions

| Article-No.  | Pipe Ø mm | d mm | h mm | Segments | Weight kg |
|--------------|-----------|------|------|----------|-----------|
| BL 11426 M14 | 200-450   | 63   | 25   | 28       | 0.2       |
| BL 11401 M14 | 300-600   | 75   | 27   | 32       | 0.25      |

**BLACK-LINE** Mushroom-head milling cutter center cutting

**Materials to be processed**

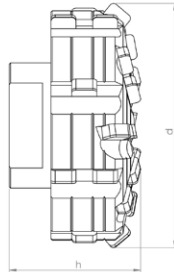
- Concrete
- Deposits / Fouling
- UV CIPP
- Roots
- PVC
- Vitrified Clay
- Felt CIPP

**Note: Use on steel-reinforced concrete will destroy the cutting elements!**

**Field of Application**

- Frontal milling
- Surface milling
- Removal of intruding obstacles
- Milling of offset socket transitions

| Article-No.  | Pipe Ø mm | d mm | h mm | Segments | Weight kg |
|--------------|-----------|------|------|----------|-----------|
| BL 11427 M14 | 200-450   | 65   | 27   | 30       | 0.2       |
| BL 11402 M14 | 300-600   | 75   | 33   | 34       | 0.3       |


**BLACK-LINE** Inlet milling cutter

**Materials to be processed**

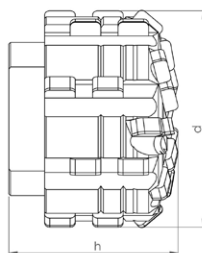
- Concrete
- Deposits / Fouling
- UV CIPP
- Roots
- PVC
- Vitrified Clay
- Felt CIPP

**Note: Use on steel-reinforced concrete will destroy the cutting elements!**

**Field of Application**

- Opening of laterals and inlet lines
- Preparatory milling of laterals
- Removal of intruding laterals
- Removal of intruding obstacles

| Article-No.  | d<br>mm | h<br>mm | Segments | Weight<br>kg |
|--------------|---------|---------|----------|--------------|
| BL 11409 M14 | 55      | 30      | 28       | 0.35         |

**BLACK-LINE** Inlet milling cutter

**Materials to be processed**

- Concrete
- Deposits / Fouling
- UV CIPP
- Roots
- PVC
- Vitrified Clay
- Felt CIPP

**Note: Use on steel-reinforced concrete will destroy the cutting elements!**

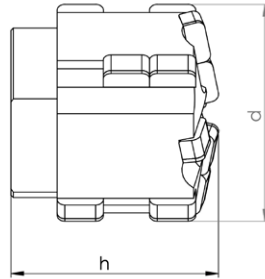
**Field of Application**

- Opening of laterals and inlet lines
- Preparatory milling of laterals
- Removal of intruding laterals
- Removal of intruding obstacles

| Article-No.  | d<br>mm | h<br>mm | Segments | Weight<br>kg |
|--------------|---------|---------|----------|--------------|
| BL 11451 M14 | 45      | 32      | 32       | 0.2          |



**BLACK-LINE** Cylinder milling cutter



**Materials to be processed**

- Concrete
- Deposits / Fouling
- UV CIPP
- Roots
- PVC
- Vitrified Clay
- Felt CIPP

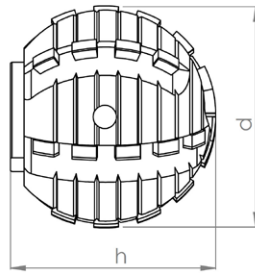
**Note: Use on steel-reinforced concrete will destroy the cutting elements!**

**Field of Application**

- Opening of laterals and inlet lines
- Preparatory milling of laterals
- Removal of intruding laterals
- Removal of intruding obstacles

| Article-No.  | d mm | h mm | Segments | Weight kg |
|--------------|------|------|----------|-----------|
| BL 11464 M14 | 30   | 24   | 14       | 0.1       |

**BLACK-LINE** Ball milling cutter



**Materials to be processed**

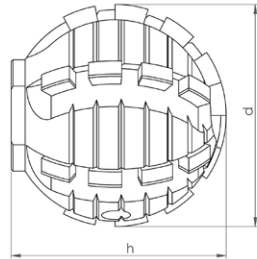
- UV CIPP
- Roots
- PVC
- Felt CIPP

**Note: Only suitable for processing CIPP liners and PVC and for cutting roots!**

**Field of Application**

- Opening of laterals and inlet lines
- Removal of intruding obstacles

| Article-No.  | d mm | h mm | Segments | Weight kg |
|--------------|------|------|----------|-----------|
| BL 11410 M14 | 50   | 45   | 30       | 0.4       |


**BLACK-LINE** Ball milling cutter

**Materials to be processed**

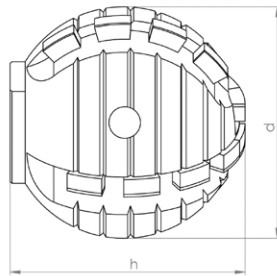
- UV CIPP
- Roots
- PVC
- Felt CIPP

**Note: Only suitable for processing CIPP liners and PVC and for cutting roots!**

**Field of Application**

- Opening of laterals and inlet lines
- Removal of intruding obstacles

| Article-No.  | d<br>mm | h<br>mm | Segments | Weight<br>kg |
|--------------|---------|---------|----------|--------------|
| BL 11446 M14 | 40      | 42      | 26       | 0.25         |

**BLACK-LINE** Ball milling cutter

**Materials to be processed**

- UV CIPP
- Roots
- PVC
- Felt CIPP

**Note: Only suitable for processing CIPP liners and PVC and for cutting roots!**

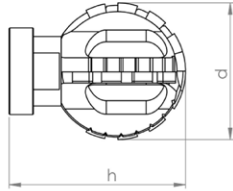
**Field of Application**

- Opening of laterals and inlet lines
- Removal of intruding obstacles

| Article-No.  | d<br>mm | h<br>mm | Segments | Weight<br>kg |
|--------------|---------|---------|----------|--------------|
| BL 11414 M14 | 40      | 42      | 18       | 0.25         |



**BLACK-LINE** Ball milling cutter Type ProView®



**Materials to be processed**

- UV CIPP
- Roots
- PVC
- Felt CIPP

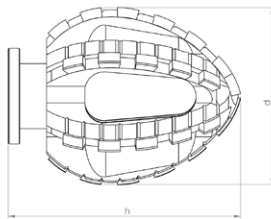
**Note: Only suitable for processing CIPP liners and PVC and for cutting roots!**

**Field of Application**

- Opening of laterals and inlet lines
- Removal of intruding obstacles

| Article-No.  | d mm | h mm | Segments | Weight kg |
|--------------|------|------|----------|-----------|
| BL 11117 M14 | 40   | 51   | 18       | 0.15      |

**BLACK-LINE** Double-cone milling cutter Type ProView®



**Materials to be processed**

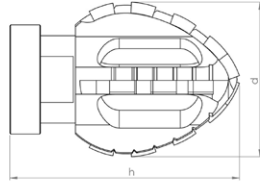
- UV CIPP
- Roots
- PVC
- Felt CIPP

**Note: Only suitable for processing CIPP liners and PVC and for cutting roots!**

**Field of Application**

- Opening of laterals and inlet lines
- Removal of intruding obstacles

| Article-No.  | d mm | h mm | Segments | Weight kg |
|--------------|------|------|----------|-----------|
| BL 11113 M14 | 45   | 60   | 34       | 0.16      |


**BLACK-LINE** Double-cone milling cutter Type ProView®

**Materials to be processed**

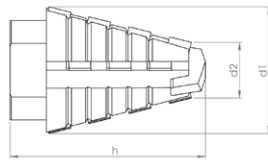
- UV CIPP
- Roots
- PVC
- Felt CIPP

**Note: Only suitable for processing CIPP liners and PVC and for cutting roots!**

**Field of Application**

- Opening of laterals and inlet lines
- Removal of intruding obstacles

| Article-No.  | d<br>mm | h<br>mm | Segments | Weight<br>kg |
|--------------|---------|---------|----------|--------------|
| BL 11118 M14 | 36      | 53      | 16       | 0.15         |


**linerCUT Pro®** Tapered milling cutter with tungsten carbide tip

**Materials to be processed**

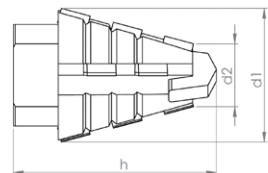
- UV CIPP
- Felt CIPP
- PVC

**Note: Only suitable for processing CIPP liners and PVC!**

**Field of Application**

- Opening of laterals and inlet lines

| Article-No.  | d1<br>mm | d2<br>mm | h<br>mm | Segments | Weight<br>kg |
|--------------|----------|----------|---------|----------|--------------|
| BL 11437 M14 | 28       | 18       | 45      | 14       | 0.08         |

**linerCUT Pro®** Tapered milling cutter with tungsten carbide tip

**Materials to be processed**

- UV CIPP
- Felt CIPP
- PVC

**Note: Only suitable for processing CIPP liners and PVC!**

**Field of Application**

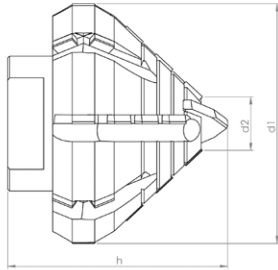
- Opening of laterals and inlet lines

| Article-No.  | d1<br>mm | d2<br>mm | h<br>mm | Segments | Weight<br>kg |
|--------------|----------|----------|---------|----------|--------------|
| BL 11438 M14 | 30       | 18       | 35      | 10       | 0.06         |





**linerCUT Pro® Taper/cylinder milling cutter with tungsten carbide tip**



**Materials to be processed**

- UV CIPP
- Felt CIPP
- PVC

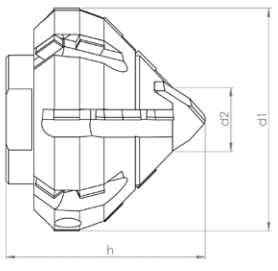
**Note: Only suitable for processing CIPP liners and PVC!**

**Field of Application**

- Opening of laterals and inlet lines

| Article-No.  | d1 mm | d2 mm | h mm | Segments | Weight kg |
|--------------|-------|-------|------|----------|-----------|
| BL 11441 M14 | 55    | 20    | 46   | 24       | 0.3       |

**linerCUT Pro® Taper/cylinder milling cutter with tungsten carbide tip**



**Materials to be processed**

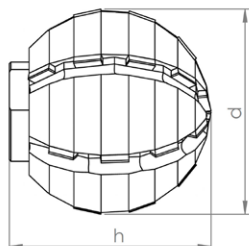
- UV CIPP
- Felt CIPP
- PVC

**Note: Only suitable for processing CIPP liners and PVC!**

**Field of Application**

- Opening of laterals and inlet lines

| Article-No.  | d1 mm | d2 mm | h mm | Segments | Weight kg |
|--------------|-------|-------|------|----------|-----------|
| BL 11439 M14 | 45    | 20    | 40   | 22       | 0.2       |


**linerCUT Pro®** Ball milling cutter

**Materials to be processed**

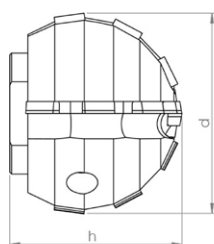
- UV CIPP
- Felt CIPP
- PVC

**Note: Only suitable for processing CIPP liners and PVC!**

**Field of Application**

- Opening of laterals and inlet lines

| Article-No.  | d mm | h mm | Segments | Weight kg |
|--------------|------|------|----------|-----------|
| BL 11444 M14 | 50   | 55   | 24       | 0.5       |

**linerCUT Pro®** Ball milling cutter

**Materials to be processed**

- UV CIPP
- Felt CIPP
- PVC

**Note: Only suitable for processing CIPP liners and PVC!**

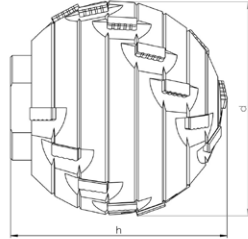
**Field of Application**

- Opening of laterals and inlet lines

| Article-No.  | d mm | h mm | Segments | Weight kg |
|--------------|------|------|----------|-----------|
| BL 11443 M14 | 40   | 36   | 12       | 0.2       |



**linerCUT Pro® 2.0 Ball milling cutter**



**Materials to be processed**

- UV CIPP
- Felt CIPP
- PVC

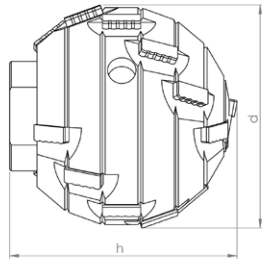
**Note: Only suitable for processing CIPP liners and PVC!**

**Field of Application**

- Opening of laterals and inlet lines

| Article-No.  | d mm | h mm | Segments | Weight kg |
|--------------|------|------|----------|-----------|
| BL 11449 M14 | 50   | 52   | 22       | 0.5       |

**linerCUT Pro® 2.0 Ball milling cutter**



**Materials to be processed**

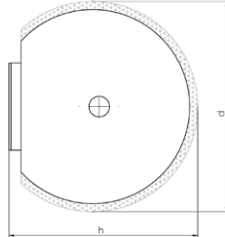
- UV CIPP
- Felt CIPP
- PVC

**Note: Only suitable for processing CIPP liners and PVC!**

**Field of Application**

- Opening of laterals and inlet lines

| Article-No.  | d mm | h mm | Segments | Weight kg |
|--------------|------|------|----------|-----------|
| BL 11448 M14 | 40   | 40   | 18       | 0.25      |


**D•GRIT** Ball milling cutter

**Materials to be processed**

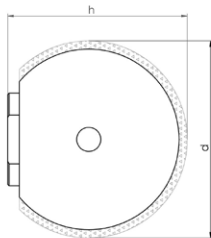
- UV CIPP
- Felt CIPP
- PVC

**Note: Only suitable for processing CIPP liners and PVC!**

**Field of Application**

- Opening of laterals and inlet lines
- CIPP liner finishing

| Article-No. | d<br>mm | h<br>mm | Grit    | Weight<br>kg |
|-------------|---------|---------|---------|--------------|
| 70002 M14   | 50      | 48      | Diamond | 0.45         |

**D•GRIT** Ball milling cutter

**Materials to be processed**

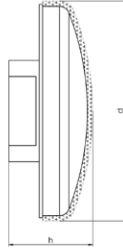
- UV CIPP
- Felt CIPP
- PVC

**Note: Only suitable for processing CIPP liners and PVC!**

**Field of Application**

- Opening of laterals and inlet lines
- CIPP liner finishing

| Article-No. | d<br>mm | h<br>mm | Grit    | Weight<br>kg |
|-------------|---------|---------|---------|--------------|
| 70001 M14   | 40      | 38      | Diamond | 0.25         |

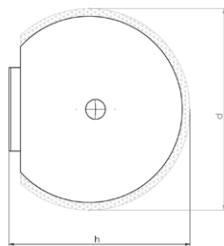

**HM•LINE** Mushroom-head milling cutter

**Materials to be processed**

- UV CIPP
- Roots
- PVC
- Felt CIPP

**Field of Application**

- Removal of intruding obstacles
- CIPP liner finishing

| Article-No. | d<br>mm | h<br>mm | Grit    | Weight<br>kg |
|-------------|---------|---------|---------|--------------|
| 50003 M14   | 67      | 30      | Carbide | 0.3          |

**HM•LINE** Ball milling cutter

**Materials to be processed**

- UV CIPP
- Roots
- PVC
- Felt CIPP

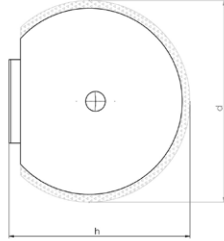
**Field of Application**

- Opening of laterals and inlet lines
- Removal of intruding obstacles
- CIPP liner finishing

| Article-No. | d<br>mm | h<br>mm | Grit    | Weight<br>kg |
|-------------|---------|---------|---------|--------------|
| 50001 M14   | 50      | 50      | Carbide | 0.6          |



**HM•LINE** Ball milling cutter



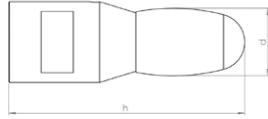
**Materials to be processed**

- UV CIPP
- PVC
- Roots
- Felt CIPP

**Field of Application**

- Opening of laterals and inlet lines
- Removal of intruding obstacles
- CIPP liner finishing

| Article-No. | d<br>mm | h<br>mm | Grit    | Weight<br>kg |
|-------------|---------|---------|---------|--------------|
| 50002 M14   | 40      | 42      | Carbide | 0.3          |


**VHM•LINE** oval shaped

**Materials to be processed**

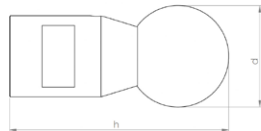
- Cast Iron
- Steel

**Note: Use on concrete or vitrified clay will destroy the cutting elements!**

**Field of Application**

- Removal of intruding obstacles

| Article-No. | d mm | h mm | Segments | Weight kg |
|-------------|------|------|----------|-----------|
| 60007 M14   | 16   | 62   | 1        | 0.15      |

**VHM•LINE** ball shaped

**Materials to be processed**

- Cast Iron
- Steel

**Note: Use on concrete or vitrified clay will destroy the cutting elements!**

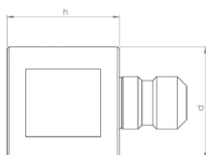
**Field of Application**

- Removal of intruding obstacles

| Article-No. | d mm | h mm | Segments | Weight kg |
|-------------|------|------|----------|-----------|
| 60008 M14   | 25   | 60   | 1        | 0.15      |



### Extension 30 mm



#### Description

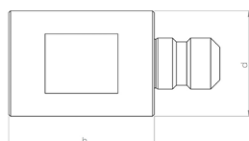
CNC fabricated tool extension for increased working radius of robot arm.

#### Specification

Stainless steel

| Article-No. | d mm | h mm | Weight kg |
|-------------|------|------|-----------|
| 90120 M14   | 30   | 30   | 0.15      |

### Extension 40 mm



#### Description

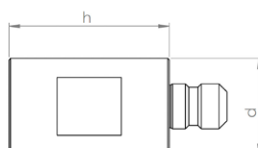
CNC fabricated tool extension for increased working radius of robot arm.

#### Specification

Stainless steel

| Article-No. | d mm | h mm | Weight kg |
|-------------|------|------|-----------|
| 90121 M14   | 30   | 40   | 0.2       |

### Extension 50 mm



#### Description

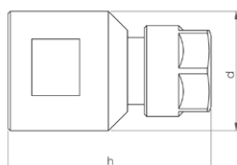
CNC fabricated tool extension for increased working radius of robot arm.

#### Specification

Stainless steel

| Article-No. | d mm | h mm | Weight kg |
|-------------|------|------|-----------|
| 90122 M14   | 30   | 50   | 0.25      |



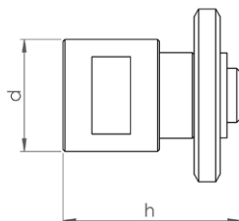

**Adapter for mounting commercially available shank tools Ø 6 mm**

**Description**

CNC fabricated collet chuck adapter for mounting commercially available shank tools.  
 e.g. burrs, brushes, flap grinders etc...  
 Mounting: Shank Ø 6-6,5 mm

**Specification**

Stainless steel

| Article-No. | d mm | h mm | Weight kg |
|-------------|------|------|-----------|
| 90171 M14   | 30   | 40   | 0.1       |

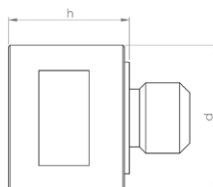
**Adapter for mounting of 3 cutting discs**

**Description**

CNC fabricated adapter for mounting of 3 cutting discs.  
 Mounting shaft Ø 22,2 mm  
 includes cutting discs and locking disc  
**NOTE:** This adapter cannot be used to mount a single cutting disc!

**Specification**

Stainless steel

| Article-No. | d mm | h mm | Weight kg |
|-------------|------|------|-----------|
| 90168 M14   | 30   | 46   | 0.2       |

**Adapter for mounting of brushes and cutting discs**

**Description**

CNC fabricated adapter for mounting of brushes and cutting discs.  
 Thread: M14 (14 mm O.D.)  
 Centering ring for cutting disc: Ø 22,2 mm  
**NOTE:** When mounting wheel brushes or cutting discs, a locking disc is also required!

**Specification**

Stainless steel

| Article-No. | d mm | h mm | Weight kg |
|-------------|------|------|-----------|
| 90112 M14   | 30   | 25   | 0.11      |



### Locking disc for mounting of wheel brushes and cutting discs



#### Description

Thread: M14 (14 mm O.D.)

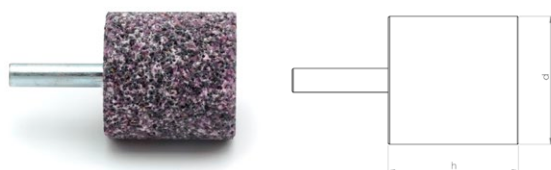
**NOTE:** Wheel brushes and cutting discs must be mounted using matching adapters!

#### Specification

Steel, burnished

| Article-No. | d mm | h mm | Weight kg |
|-------------|------|------|-----------|
| SP 90110    | 45   | 8,5  | 0.07      |

### Mounted point-cylindrical



#### Description

Corundum mounted point, for working on steel and cast iron.

**NOTE:** Only useable with adapter!

#### Specification

Corundum

| Article-No. | d mm | h mm | Weight kg |
|-------------|------|------|-----------|
| 81002       | 32   | 32   | 0.08      |

### Cup wheel Ø 80 mm



#### Description

Corundum cup wheel, for working on steel and cast iron.

Mounting hole Ø 22,2 mm

**NOTE:** May be used only with matching adapter and locking disc!

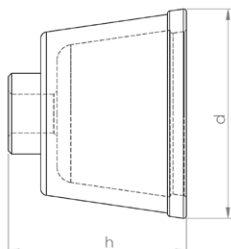
#### Specification

Corundum

| Article-No. | d mm | h mm | Weight kg |
|-------------|------|------|-----------|
| 81003       | 80   | 28   | 0.2       |



### Cup brush Ø 65 mm



#### Description

Premium rotary wire brush for finishing work on CIPP liners and PVC.

Mounting hole M14 (14 mm thread O.D.)

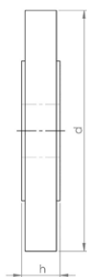
**NOTE:** May be used only with matching adapter!

#### Specification

Wire thickness: Ø 0,8 mm

| Article-No. | d mm | h mm | Weight kg |
|-------------|------|------|-----------|
| 80020       | 65   | 50   | 0.25      |

### Wheel brush Ø 100 mm



#### Description

Premium rotary wire brush for finishing work on CIPP liners and PVC.

Mounting hole Ø 22,2 mm

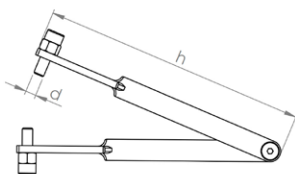
**NOTE:** May be used only with matching adapter and locking disc!

#### Specification

Wire thickness: Ø 0,5 mm

| Article-No. | d mm | h mm | Weight kg |
|-------------|------|------|-----------|
| 80018       | 100  | 15   | 0.2       |

### Pin-tipped tongs for safe tool changeover



#### Description

The tongs are fitted with pin (with adjustable gripping depth) which are inserted into the gripping holes of the milling tools, permitting safe changeover without risking damage to the tooling.

#### Specification

Steel

| Article-No. | d mm | h mm | Weight kg |
|-------------|------|------|-----------|
| 92002       | 5    | 150  | 0.125     |