

PRODUCT PROGRAMME

Product catalog for
robots of the brand

Hächler*

PRODUCT PROGRAMME 2025




The tables of contents in this catalog are interactive. A click will lead you directly to the desired target page.

TABLE OF CONTENTS

Robot type	Page
Hächler* HF 200*	3
Hächler* HF 130*	25
Hächler* Climbolino E*	59
Hächler* Climb*	79
Hächler* Climbolino*	101



Hächler* HF 200*




N-TEC II[®]
PREMIUM

Premium Diamond Tools for High-Performance Material Removal and Long Service Life

Materials to be processed

• Reinforced Concrete	• Concrete	• Cast Iron
	• Deposits / Fouling	• Vitrified Clay

Page 4



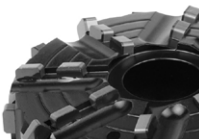
N-TEC II[®]

Field-Proven Standard Diamond Tools with Outstanding Value for Purchase Investment

Materials to be processed

• Reinforced Concrete	• Concrete	• Cast Iron
	• Deposits / Fouling	• Vitrified Clay

Page 8




BLACK-LINE

High-Tech Milling Tools made of PCD with Unbeatable Cutting and Stock Removal Performance for Almost Every Material

Materials to be processed

• Concrete	• UV CIPP	• PVC	• Felt CIPP
• Deposits / Fouling	• Roots	• Vitrified Clay	

Page 12




linerCUT Pro[®]

Absolutely Smooth-Running and Precise PCD Cutting Tools for Opening CIPP - Optimized for UV CIPP -

Materials to be processed

• UV CIPP	• PVC	• Felt CIPP
-----------	-------	-------------

Page 16




linerCUT Pro[®] 2.0

Absolutely Smooth-Running and Precise PCD Cutting Tools for Opening CIPP - All Kinds of CIPP and PVC -

Materials to be processed

• UV CIPP	• PVC	• Felt CIPP
-----------	-------	-------------

Page 19



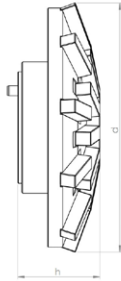
Functional Accessories

High-quality brushes, adapters, extensions, etc.

Page 20



Mushroom-head milling cutter spring-mounted



Materials to be processed

- Reinforced Concrete
- Concrete
- Deposits / Fouling
- Cast Iron
- Vitrified Clay

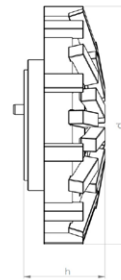
Field of Application

- Surface grinding and milling
- Milling of offset socket transitions

Article-No.	Pipe Ø mm	d mm	h mm	Segments	Weight kg
42001 P	200	100	40	20	1.3
42002 P	250	120	45	20	1.6
42003 P	300	120	45	20	1.6
42004 P	350-400	120	45	20	1.6
42005 P	450-500	120	45	20	1.6
42006 P	600	120	45	20	1.6



Mushroom-head milling cutter spring-mounted



Materials to be processed

- Reinforced Concrete
- Concrete
- Deposits / Fouling
- Cast Iron
- Vitrified Clay

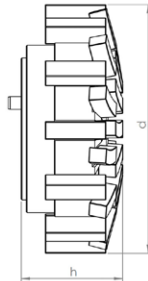
Field of Application

- Removal of intruding laterals
- Surface grinding and milling
- Milling of offset socket transitions

Article-No.	Pipe Ø mm	d mm	h mm	Segments	Weight kg
45001 P	200	110	40	30	1.3
45002 P	250	120	45	30	1.6
45003 P	300	120	45	30	1.6
45004 P	350-400	120	45	30	1.6
45005 P	450-500	120	45	30	1.6
45006 P	600	120	45	30	1.6



2-in-1 cutter spring-mounted



Materials to be processed

- Reinforced Concrete
- Concrete
- Deposits / Fouling
- Cast Iron
- Vitrified Clay

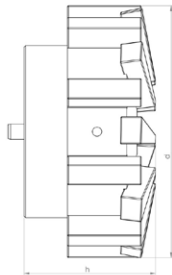
Field of Application

- Preparatory milling of laterals
- Removal of intruding laterals
- Surface grinding and milling
- Milling of offset socket transitions

Article-No.	Pipe Ø mm	d mm	h mm	Segments	Weight kg
KF 45001 P	200	100	45	36	1.2
KF 45002 P	250	100	45	36	1.2
KF 45003 P	300	100	45	36	1.2
KF 45004 P	350-400	100	45	36	1.2
KF 45005 P	450-500	100	45	36	1.2
KF 45006 P	600	100	45	36	1.2



Inlet milling cutter machined for minimum runout



Materials to be processed

- Reinforced Concrete
- Concrete
- Cast Iron
- Vitrified Clay

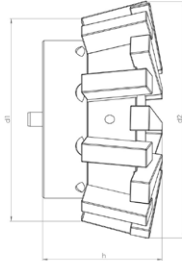
Field of Application

- Preparatory milling of laterals
- Removal of intruding laterals

Article-No.	Pipe Ø mm	d mm	h mm	Segments	Weight kg
42007 P	250-600	80	43	18	1



Inlet milling cutter 15° machined for minimum runout



Materials to be processed

- Reinforced Concrete
- Concrete
- Cast Iron
- Vitrified Clay

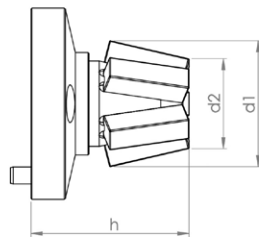
Field of Application

- Preparatory milling of laterals
- Removal of intruding laterals

Article-No.	d1 mm	d2 mm	h mm	Segments	Weight kg
42032 P	70	80	43	18	0.8



Slot milling cutter



Materials to be processed

- Reinforced Concrete
- Concrete
- Vitrified Clay

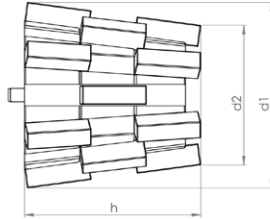
Field of Application

- Preparatory milling of cracks and sockets

Article-No.	Pipe Ø mm	d1 mm	d2 mm	h mm	Segments	Weight kg
42012 P	200-300	35	28	40	5	0.3
42013 P	300-450	35	28	45	5	0.3
42021 P	450-600	35	28	55	5	0.4



Tapered milling cutter machined for minimum runout



Materials to be processed

- Reinforced Concrete
- Concrete
- Cast Iron
- Vitrified Clay

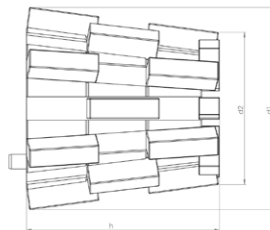
Field of Application

- Preparatory milling of laterals
- Removal of intruding laterals

Article-No.	d1 mm	d2 mm	h mm	Segments	Weight kg
42010 P	70	50	65	18	1



Tapered milling cutter with top segments, machined for minimum runout



Materials to be processed

- Reinforced Concrete
- Concrete
- Cast Iron
- Vitrified Clay

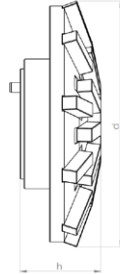
Field of Application

- Preparatory milling of laterals
- Removal of intruding laterals

Article-No.	d1 mm	d2 mm	h mm	Segments	Weight kg
42033 P	70	50	65	24	1.0



N•TEC II® Mushroom-head milling cutter spring-mounted



Materials to be processed

- Reinforced Concrete
- Concrete
- Deposits / Fouling
- Cast Iron
- Vitrified Clay

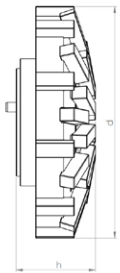
Field of Application

- Surface grinding and milling
- Milling of offset socket transitions

Article-No.	Pipe Ø mm	d mm	h mm	Segments	Weight kg
43001	200	100	40	20	1.3
43002	250	120	45	20	1.6
43003	300	120	45	20	1.6
43004	350-400	120	45	20	1.6
43005	450-500	120	45	20	1.6
43006	600	120	45	20	1.6

Note: Milling tools in other segment hardnesses are available on request.

N•TEC II® Mushroom-head milling cutter spring-mounted



Materials to be processed

- Reinforced Concrete
- Concrete
- Deposits / Fouling
- Cast Iron
- Vitrified Clay

Field of Application

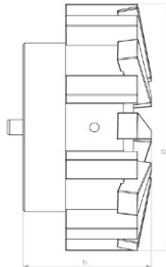
- Removal of intruding laterals
- Surface grinding and milling
- Milling of offset socket transitions

Article-No.	Pipe Ø mm	d mm	h mm	Segments	Weight kg
46001	200	110	40	30	1.3
46002	250	120	45	30	1.6
46003	300	120	45	30	1.6
46004	350-400	120	45	30	1.6
46005	450-500	120	45	30	1.6
46006	600	120	45	30	1.6

Note: Milling tools in other segment hardnesses are available on request.



N•TEC II® Inlet milling cutter



Materials to be processed

- Reinforced Concrete
- Concrete
- Cast Iron
- Vitrified Clay

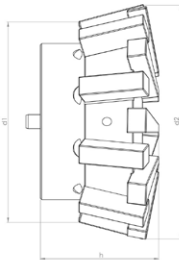
Field of Application

- Preparatory milling of laterals
- Removal of intruding laterals

Article-No.	Pipe Ø mm	d mm	h mm	Segments	Weight kg
43007	250-600	80	43	18	1

Note: Milling tools in other segment hardnesses are available on request.

N•TEC II® Inlet milling cutter 15°



Materials to be processed

- Reinforced Concrete
- Concrete
- Cast Iron
- Vitrified Clay

Field of Application

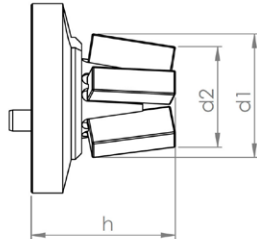
- Preparatory milling of laterals
- Removal of intruding laterals

Article-No.	d1 mm	d2 mm	h mm	Segments	Weight kg
43032	70	80	43	18	0.8

Note: Milling tools in other segment hardnesses are available on request.



N•TEC II® Slot milling cutter



Materials to be processed

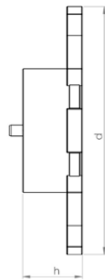
- Reinforced Concrete
- Concrete
- Cast Iron
- Vitrified Clay

Field of Application

- Preparatory milling of cracks and sockets

Article-No.	Pipe Ø mm	d1 mm	d2 mm	h mm	Segments	Weight kg
44012	200-300	35	28	40	5	0.3
44013	300-450	35	28	45	5	0.3
44021	450-600	35	28	55	5	0.4

N•TEC II® Disk milling cutter



Materials to be processed

- Reinforced Concrete
- Concrete
- Vitrified Clay

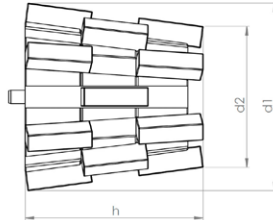
Field of Application

- Milling of circumferential slots on laterals

Article-No.	Pipe Ø mm	d mm	h mm	Segments	Weight kg
43011	200-300	85	25	6	0.5
43015	300-600	110	25	9	0.7



N•TEC II® Tapered milling cutter



Materials to be processed

- Reinforced Concrete
- Concrete
- Cast Iron
- Vitrified Clay

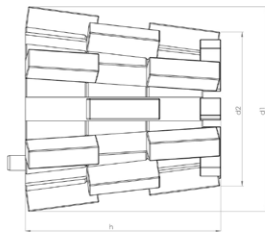
Field of Application

- Preparatory milling of laterals
- Removal of intruding laterals

Article-No.	d1 mm	d2 mm	h mm	Segments	Weight kg
43010	70	50	65	18	1.0

Note: Milling tools in other segment hardnesses are available on request.

N•TEC II® Tapered milling cutter with top segments



Materials to be processed

- Reinforced Concrete
- Concrete
- Cast Iron
- Vitrified Clay

Field of Application

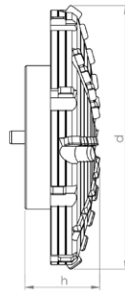
- Preparatory milling of laterals
- Removal of intruding laterals

Article-No.	d1 mm	d2 mm	h mm	Segments	Weight kg
43033	70	50	65	24	1.0

Note: Milling tools in other segment hardnesses are available on request.



BLACK-LINE Mushroom-head milling cutter



Materials to be processed

- Concrete
- Deposits / Fouling
- UV CIPP
- Roots
- PVC
- Vitrified Clay
- Felt CIPP

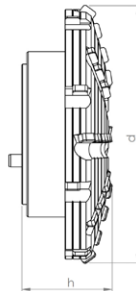
Note: Use on steel-reinforced concrete will destroy the cutting elements!

Field of Application

- Surface milling
- Removal of intruding obstacles
- Milling of offset socket transitions

Article-No.	Pipe Ø mm	d mm	h mm	Segments	Weight kg
BL 11201	250	105	30	40	0.95
BL 11202	300	105	30	40	0.95
BL 11203	350-400	105	30	40	0.95
BL 11204	450-500	105	30	40	0.95
BL 11205	600	105	30	40	0.95

BLACK-LINE Mushroom-head milling cutter spring-mounted



Materials to be processed

- Concrete
- Deposits / Fouling
- UV CIPP
- Roots
- PVC
- Vitrified Clay
- Felt CIPP

Note: Use on steel-reinforced concrete will destroy the cutting elements!

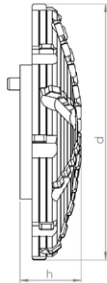
Field of Application

- Surface milling
- Removal of intruding obstacles
- Milling of offset socket transitions

Article-No.	Pipe Ø mm	d mm	h mm	Segments	Weight kg
BL 11216	250	100	35	36	1.1
BL 11217	300	100	35	36	1.1
BL 11218	350-400	100	35	36	1.1
BL 11219	450-500	100	35	36	1.1
BL 11220	600	100	35	36	1.1



BLACK-LINE Mushroom-head milling cutter center cutting



Materials to be processed

- Concrete
- Deposits / Fouling
- UV CIPP
- Roots
- PVC
- Vitrified Clay
- Felt CIPP

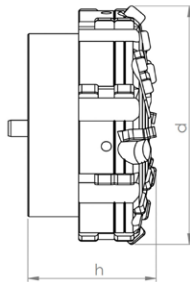
Note: Use on steel-reinforced concrete will destroy the cutting elements!

Field of Application

- Frontal milling
- Surface milling
- Removal of intruding obstacles
- Milling of offset socket transitions

Article-No.	Pipe Ø mm	d mm	h mm	Segments	Weight kg
BL 11206	250	105	30	44	0.95
BL 11207	300	105	30	44	0.95
BL 11208	350-400	105	30	44	0.95
BL 11209	450-500	105	30	44	0.95
BL 11210	600	105	30	44	0.95

BLACK-LINE Inlet milling cutter



Materials to be processed

- Concrete
- Deposits / Fouling
- UV CIPP
- Roots
- PVC
- Vitrified Clay
- Felt CIPP

Note: Use on steel-reinforced concrete will destroy the cutting elements!

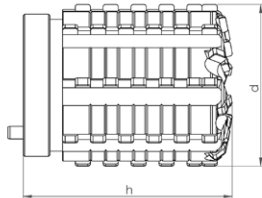
Field of Application

- Opening of laterals and inlet lines
- Preparatory milling of laterals
- Removal of intruding laterals
- Removal of intruding obstacles

Article-No.	Pipe Ø mm	d mm	h mm	Segments	Weight kg
BL 11211	250-600	73	40	36	0.8



BLACK-LINE Cylinder milling cutter



Materials to be processed

- Concrete
- Deposits / Fouling
- UV CIPP
- Roots
- PVC
- Vitrified Clay
- Felt CIPP

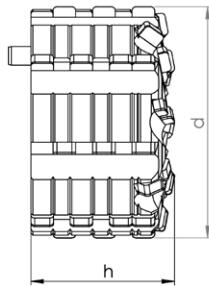
Note: Use on steel-reinforced concrete will destroy the cutting elements!

Field of Application

- Opening of laterals and inlet lines
- Preparatory milling of laterals
- Removal of intruding laterals
- Removal of intruding obstacles

Article-No.	d mm	h mm	Segments	Weight kg
BL 11227	60	85	64	1.6

BLACK-LINE Cylinder milling cutter



Materials to be processed

- Concrete
- Deposits / Fouling
- UV CIPP
- Roots
- PVC
- Vitrified Clay
- Felt CIPP

Note: Use on steel-reinforced concrete will destroy the cutting elements!

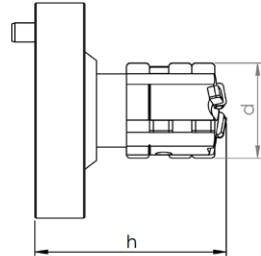
Field of Application

- Opening of laterals and inlet lines
- Preparatory milling of laterals
- Removal of intruding laterals
- Removal of intruding obstacles

Article-No.	d mm	h mm	Segments	Weight kg
BL 11228	60	40	44	0.8



BLACK-LINE End milling cutter



Materials to be processed

- Concrete
- Deposits / Fouling
- UV CIPP
- Roots
- PVC
- Vitrified Clay
- Felt CIPP

Note: Use on steel-reinforced concrete will destroy the cutting elements!

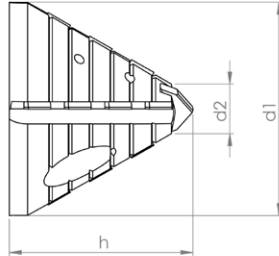
Field of Application

- Opening of laterals and inlet lines
- Preparatory milling of cracks and sockets

Article-No.	d mm	h mm	Segments	Weight kg
BL 11213	27	50	14	0.3



linerCUT Pro® Tapered milling cutter with tungsten carbide tip



Materials to be processed

- UV CIPP
- Felt CIPP
- PVC

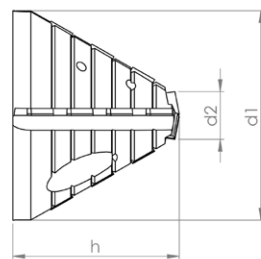
Note: Only suitable for processing CIPP liners and PVC!

Field of Application

- Opening of laterals and inlet lines

Article-No.	d1 mm	d2 mm	h mm	Segments	Weight kg
BL 11221	60	20	50	14	0.4

linerCUT Pro® Tapered milling cutter with PCD tip



Materials to be processed

- UV CIPP
- Felt CIPP
- PVC

Note: Only suitable for processing CIPP liners and PVC!

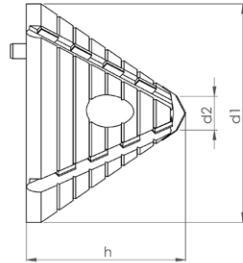
Field of Application

- Opening of laterals and inlet lines

Article-No.	d1 mm	d2 mm	h mm	Segments	Weight kg
BL 11223	60	18	50	16	0.4



linerCUT Pro® Tapered milling cutter with tungsten carbide tip



Materials to be processed

- UV CIPP
- Felt CIPP
- PVC

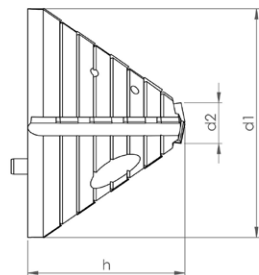
Note: Only suitable for processing CIPP liners and PVC!

Field of Application

- Opening of laterals and inlet lines

Article-No.	d1 mm	d2 mm	h mm	Segments	Weight kg
BL 11226	75	20	55	16	0.65

linerCUT Pro® Tapered milling cutter with PCD tip



Materials to be processed

- UV CIPP
- Felt CIPP
- PVC

Note: Only suitable for processing CIPP liners and PVC!

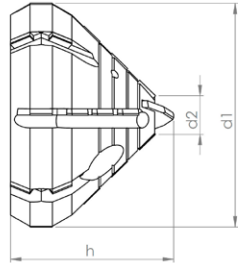
Field of Application

- Opening of laterals and inlet lines

Article-No.	d1 mm	d2 mm	h mm	Segments	Weight kg
BL 11225	75	18	50	18	0.65



linerCUT Pro® Taper/cylinder milling cutter with tungsten carbide tip



Materials to be processed

- UV CIPP
- Felt CIPP
- PVC

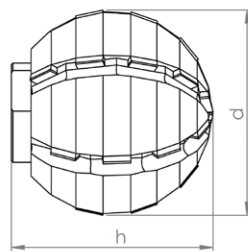
Note: Only suitable for processing CIPP liners and PVC!

Field of Application

- Opening of laterals and inlet lines

Article-No.	d1 mm	d2 mm	h mm	Segments	Weight kg
BL 11222	70	20	50	24	0.65

linerCUT Pro® Ball milling cutter with additional water bore holes



Materials to be processed

- UV CIPP
- Felt CIPP
- PVC

Note: Only suitable for processing CIPP liners and PVC!

Field of Application

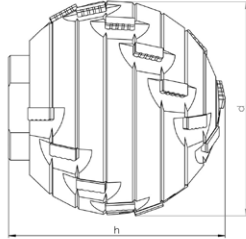
- Opening of laterals and inlet lines

Article-No.	d mm	h mm	Segments	Weight kg
BL 11461	50	55	24	0.5

Note: Tool can only be used with matching adapter 90110!



linerCUT Pro[®] 2.0 Ball milling cutter with additional water bore holes



Materials to be processed

- UV CIPP
- Felt CIPP
- PVC

Note: Only suitable for processing CIPP liners and PVC!

Field of Application

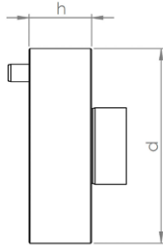
- Opening of laterals and inlet lines

Article-No.	d mm	h mm	Segments	Weight kg
BL 11462	50	52	22	0.5

Note: Tool can only be used with matching adapter 90110!



Extension 18 mm



Description

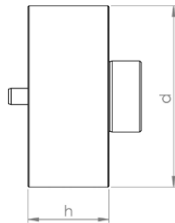
CNC fabricated tool extension for increased working radius of robot arm.

Specification

Stainless steel

Article-No.	d mm	h mm	Weight kg
90114	56	18	0.3

Extension 25 mm



Description

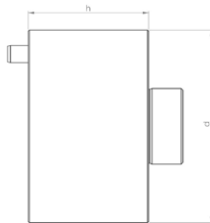
CNC fabricated tool extension for increased working radius of robot arm.

Specification

Stainless steel

Article-No.	d mm	h mm	Weight kg
90115	56	25	0.4

Extension 35 mm



Description

CNC fabricated tool extension for increased working radius of robot arm.

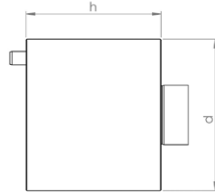
Specification

Stainless steel

Article-No.	d mm	h mm	Weight kg
90183	56	35	0.6



Extension 50 mm



Description

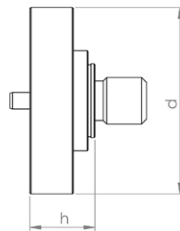
CNC fabricated tool extension for increased working radius of robot arm.

Specification

Stainless steel

Article-No.	d mm	h mm	Weight kg
90116	56	50	0.9

Adapter for mounting of brushes and cutting discs



Description

CNC fabricated adapter for mounting of brushes and cutting discs.

Thread: M14 (14 mm O.D.)

Centering ring for cutting disc: Ø 22,2 mm

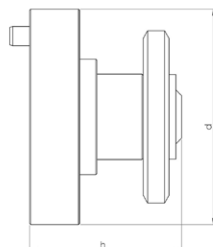
NOTE: When mounting wheel brushes or cutting discs, a locking disc is also required!

Specification

Stainless steel

Article-No.	d mm	h mm	Weight kg
90110	56	18	0.25

Adapter for mounting of 4 cutting discs



Description

CNC fabricated adapter for mounting of 4 cutting discs.

Mounting shaft Ø 22,2 mm

includes 4 cutting discs and locking disc

NOTE: This adapter cannot be used to mount a single cutting disc!

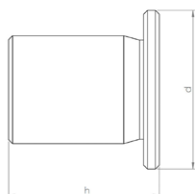
Specification

Stainless steel

Article-No.	d mm	h mm	Weight kg
90170	56	47	0.25



Adapter for mounting a half ball grinding stone



Description

CNC fabricated adapter for mounting a half-ball grinding stone.

NOTE: This adapter can only be used with part number 81001!

Specification

Stainless steel

Article-No.	d mm	h mm	Weight kg
90174	40	38	0.12

Locking disc for mounting of wheel brushes and cutting discs



Description

Thread: M14 (14 mm O.D.)

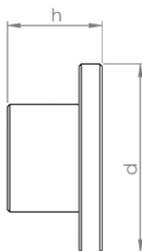
NOTE: Wheel brushes and cutting discs must be mounted using matching adapters!

Specification

Steel, burnished

Article-No.	d mm	h mm	Weight kg
SP 90110	45	8,5	0.07

Protective cap for protection of locking ring of spring-mounted milling tools



Description

The protective cap covers the locking ring during the milling process.

The cap protects against abrasion and prevents ejection of the spring-action mounting element from the milling head.

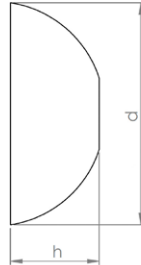
Specification

Steel

Article-No.	d mm	h mm	Weight kg
90125	32	14	0.02



Grinding stone Half ball Ø 125 mm



Description

Half-ball grinding stone made of corundum, for cosmetic finishing of epoxy resin repaired side drains.

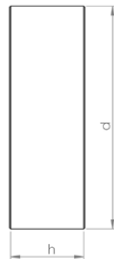
NOTE: Only useable with adapter 90174!

Specification

Corundum

Article-No.	d mm	h mm	Weight kg
81001	125	50	0.65

Cup wheel Ø 80 mm



Description

Corundum cup wheel, for working on steel and cast iron. Mounting hole Ø 22,2 mm

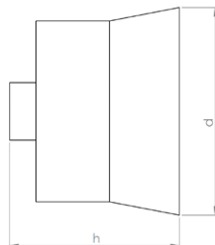
NOTE: May be used only with matching adapter and locking disc!

Specification

Corundum

Article-No.	d mm	h mm	Weight kg
81003	80	28	0.2

Cup brush Ø 80 mm



Description

Premium rotary wire brush for finishing work on CIPP liners and PVC.

Mounting hole M14 (14 mm thread O.D.)

NOTE: May be used only with matching adapter!

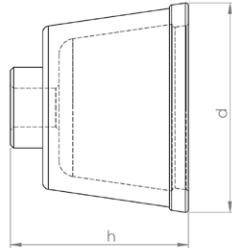
Specification

Wire thickness: Ø 0,5 mm

Article-No.	d mm	h mm	Weight kg
80019	80	80	0.65



Cup brush Ø 65 mm



Description

Premium rotary wire brush for finishing work on CIPP liners and PVC.

Mounting hole M14 (14 mm thread O.D.)

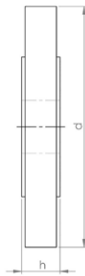
NOTE: May be used only with matching adapter!

Specification

Wire thickness: Ø 0,8 mm

Article-No.	d mm	h mm	Weight kg
80020	65	50	0.25

Wheel brush Ø 100 mm



Description

Premium rotary wire brush for finishing work on CIPP liners and PVC.

Mounting hole Ø 22,2 mm

NOTE: May be used only with matching adapter and locking disc!


Specification

Wire thickness: Ø 0,5 mm

Article-No.	d mm	h mm	Weight kg
80018	100	15	0.2



N•TEC II[®]
PREMIUM




Premium Diamond Tools for High-Performance Material Removal and Long Service Life

Materials to be processed

- Reinforced Concrete
- Concrete
- Deposits / Fouling
- Concrete
- Cast Iron
- Vitrified Clay

Page 27

N•TEC II[®]



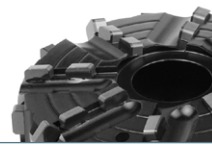
Field-Proven Standard Diamond Tools with Outstanding Value for Purchase Investment

Materials to be processed

- Reinforced Concrete
- Concrete
- Deposits / Fouling
- Concrete
- Cast Iron
- Vitrified Clay

Page 35

BLACK•LINE




High-Tech Milling Tools made of PCD with Unbeatable Cutting and Stock Removal Performance for Almost Every Material

Materials to be processed

- Concrete
- Deposits / Fouling
- UV CIPP
- Roots
- PVC
- Vitrified Clay
- Felt CIPP

Page 38

linerCUT Pro[®]




Absolutely Smooth-Running and Precise PCD Cutting Tools for Opening CIPP - Optimized for UV CIPP -

Materials to be processed

- UV CIPP
- PVC
- Felt CIPP

Page 45

linerCUT Pro[®] 2.0




Absolutely Smooth-Running and Precise PCD Cutting Tools for Opening CIPP - All Kinds of CIPP and PVC -

Materials to be processed

- UV CIPP
- PVC
- Felt CIPP

Page 49

D•GRIT



Milling Tools with Diamond Granules for Opening CIPP - Optimal for UV CIPP and Lined Cast Iron Pipes -

Materials to be processed

- UV CIPP
- PVC
- Felt CIPP

Page 50

HM•LINE



Cost-Efficient Milling Tools with Carbide Granulate Tipping for Opening and Reworking CIPP

Materials to be processed

- UV CIPP
- Roots
- PVC
- Felt CIPP

Page 52



Special Milling Tools for Processing Steel and Cast Iron

Materials to be processed

- Cast Iron
- Steel

Page 54



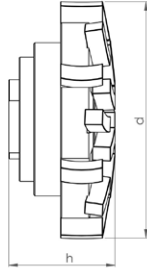
Functional Accessories

High-quality brushes, adapters, extensions, etc.

Page 55



Mushroom-head milling cutter spring-mounted



Materials to be processed

- Reinforced Concrete
- Concrete
- Deposits / Fouling
- Cast Iron
- Vitrified Clay

Field of Application

- Removal of intruding laterals
- Surface grinding and milling
- Removal of intruding obstacles
- Milling of offset socket transitions

Article-No.	Pipe Ø mm	d mm	h mm	Segments	Weight kg
20044 P M14	200-300	90	40	21	0.7
20045 P M14	300-450	90	40	21	0.7
20046 P M14	450-600	90	40	21	0.7



Mushroom-head milling cutter machined for minimum runout



Materials to be processed

- Reinforced Concrete
- Concrete
- Deposits / Fouling
- Cast Iron
- Vitrified Clay

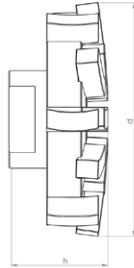
Field of Application

- Removal of intruding laterals
- Surface grinding and milling
- Milling of offset socket transitions

Article-No.	Pipe Ø mm	d mm	h mm	Segments	Weight kg
20006 P M14	200-300	80	30	21	0.45
20007 P M14	300-450	80	30	21	0.45
20008 P M14	450-600	80	30	21	0.45



Mushroom-head milling cutter machined for minimum runout



Materials to be processed

- Reinforced Concrete
- Concrete
- Deposits / Fouling
- Cast Iron
- Vitrified Clay

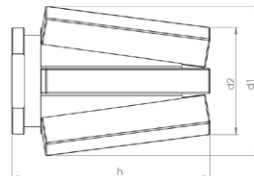
Field of Application

- Removal of intruding laterals
- Surface grinding and milling
- Milling of offset socket transitions

Article-No.	Pipe Ø mm	d mm	h mm	Segments	Weight kg
20024 P M14	200-300	70	30	18	0.35
20025 P M14	300-450	70	30	18	0.35
20026 P M14	450-600	70	30	18	0.35



Tapered milling cutter machined for minimum runout



Materials to be processed

- Reinforced Concrete
- Concrete
- Cast Iron
- Vitrified Clay

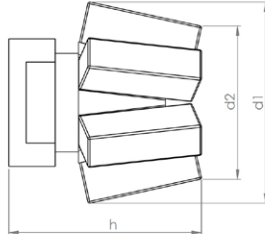
Field of Application

- Preparatory milling of laterals
- Removal of intruding laterals

Article-No.	d1 mm	d2 mm	h mm	Segments	Weight kg
20013 P M14	38	28	53	6	0.15



Tapered milling cutter machined for minimum runout



Materials to be processed

- Reinforced Concrete
- Concrete
- Cast Iron
- Vitrified Clay

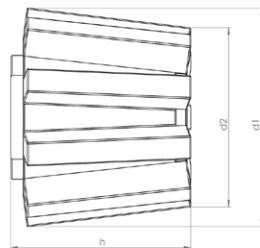
Field of Application

- Preparatory milling of laterals
- Removal of intruding laterals

Article-No.	d1 mm	d2 mm	h mm	Segments	Weight kg
20027 P M14	36	28	32	6	0.1



Tapered milling cutter machined for minimum runout



Materials to be processed

- Reinforced Concrete
- Concrete
- Cast Iron
- Vitrified Clay

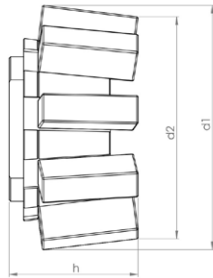
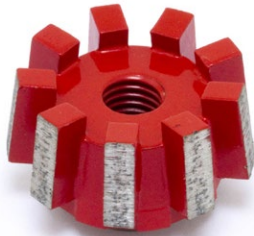
Field of Application

- Preparatory milling of laterals
- Removal of intruding laterals

Article-No.	d1 mm	d2 mm	h mm	Segments	Weight kg
20004 P M14	52	42	40	9	0.3



Tapered milling cutter machined for minimum runout



Materials to be processed

- Reinforced Concrete
- Concrete
- Cast Iron
- Vitrified Clay

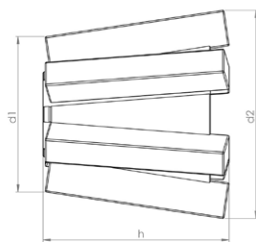
Field of Application

- Preparatory milling of laterals
- Removal of intruding laterals

Article-No.	d1 mm	d2 mm	h mm	Segments	Weight kg
20001 P M14	52	46	25	9	0.2



V-shape milling cutter machined for minimum runout



Materials to be processed

- Reinforced Concrete
- Concrete
- Cast Iron
- Vitrified Clay

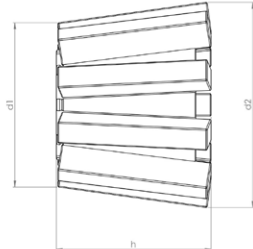
Field of Application

- Preparatory milling of laterals
- Removal of intruding laterals

Article-No.	d1 mm	d2 mm	h mm	Segments	Weight kg
20043 P M14	35	45	42	6	0.15



V-shape milling cutter machined for minimum runout



Materials to be processed

- Reinforced Concrete
- Concrete
- Cast Iron
- Vitrified Clay

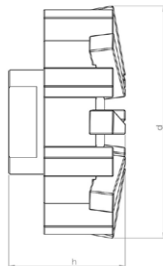
Field of Application

- Preparatory milling of laterals
- Removal of intruding laterals

Article-No.	d1 mm	d2 mm	h mm	Segments	Weight kg
20039 P M14	42	52	42	9	0.3



Inlet milling cutter machined for minimum runout



Materials to be processed

- Reinforced Concrete
- Concrete
- Cast Iron
- Vitrified Clay

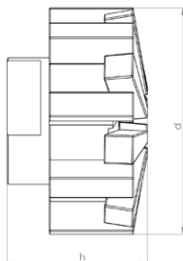
Field of Application

- Preparatory milling of laterals
- Removal of intruding laterals

Article-No.	d mm	h mm	Segments	Weight kg
20015 P M14	68	33	16	0.4



Inlet milling cutter machined for minimum runout



Materials to be processed

- Reinforced Concrete
- Concrete
- Cast Iron
- Vitrified Clay

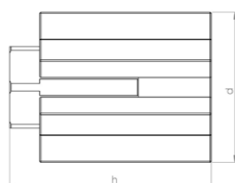
Field of Application

- Preparatory milling of laterals
- Removal of intruding laterals

Article-No.	d mm	h mm	Segments	Weight kg
20047 P M14	55	35	16	0.3



Finger milling cutter machined for minimum runout



Materials to be processed

- Reinforced Concrete
- Concrete
- Cast Iron
- Vitrified Clay

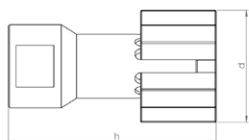
Field of Application

- Preparatory milling of cracks and sockets

Article-No.	d mm	h mm	Segments	Weight kg
20048 P M14	35	50	7	0.2



Finger milling cutter machined for minimum runout



Materials to be processed

- Reinforced Concrete
- Concrete
- Cast Iron
- Vitrified Clay

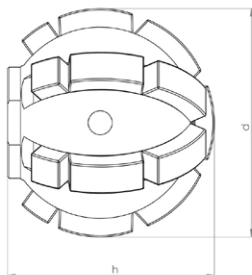
Field of Application

- Preparatory milling of cracks and sockets

Article-No.	d mm	h mm	Segments	Weight kg
20003 P M14	30	55	5	0.1



Ball milling cutter



Materials to be processed

- Reinforced Concrete
- Concrete
- Deposits / Fouling
- Cast Iron
- Vitrified Clay

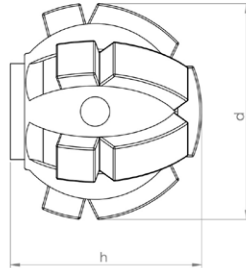
Field of Application

- Preparatory milling of laterals
- Removal of intruding laterals
- Removal of intruding obstacles

Article-No.	d mm	h mm	Segments	Weight kg
20020 P M14	50	46	19	0.3



Ball milling cutter



Materials to be processed

- Reinforced Concrete
- Concrete
- Deposits / Fouling
- Cast Iron
- Vitrified Clay

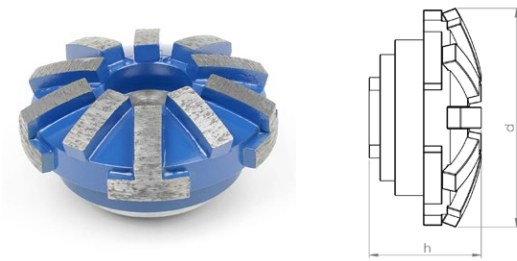
Field of Application

- Preparatory milling of laterals
- Removal of intruding laterals
- Removal of intruding obstacles

Article-No.	d mm	h mm	Segments	Weight kg
20021 P M14	40	37	13	0.2



N•TEC II® Mushroom-head milling cutter spring-mounted



Materials to be processed

- Reinforced Concrete
- Concrete
- Deposits / Fouling
- Cast Iron
- Vitrified Clay

Field of Application

- Removal of intruding laterals
- Surface grinding and milling
- Removal of intruding obstacles
- Milling of offset socket transitions

Article-No.	Pipe Ø mm	d mm	h mm	Segments	Weight kg
20036 M14	200-300	80	42	15	0.75
20037 M14	300-450	80	42	15	0.75
20038 M14	450-600	80	42	15	0.75

Note: Milling tools in other segment hardnesses are available on request.

N•TEC II® Mushroom-head milling cutter



Materials to be processed

- Reinforced Concrete
- Concrete
- Deposits / Fouling
- Cast Iron
- Vitrified Clay

Field of Application

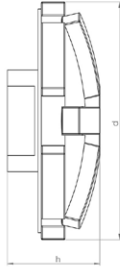
- Removal of intruding laterals
- Surface grinding and milling
- Milling of offset socket transitions

Article-No.	Pipe Ø mm	d mm	h mm	Segments	Weight kg
20031 M14	200-300	70	30	15	0.35
20032 M14	300-450	70	30	15	0.35
20033 M14	450-600	70	30	15	0.35

Note: Milling tools in other segment hardnesses are available on request.



N•TEC II® Mushroom-head milling cutter



Materials to be processed

- Reinforced Concrete
- Concrete
- Deposits / Fouling
- Cast Iron
- Vitrified Clay

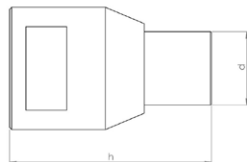
Field of Application

- Removal of intruding laterals
- Surface grinding and milling
- Milling of offset socket transitions

Article-No.	Pipe Ø mm	d mm	h mm	Segments	Weight kg
21006 M14	200-300	70	30	10	0.3
21007 M14	300-450	70	30	10	0.3
21008 M14	450-600	70	30	10	0.3

Note: Milling tools in other segment hardnesses are available on request.

N•TEC II® Slot milling cutter



Materials to be processed

- Reinforced Concrete
- Concrete
- Cast Iron
- Vitrified Clay

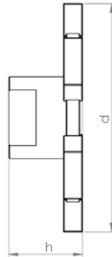
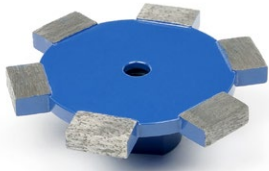
Field of Application

- Preparatory milling of cracks and sockets

Article-No.	d mm	h mm	Segments	Weight kg
20009 M14	18	50	1	0.1



N•TEC II® Disk milling cutter



Materials to be processed

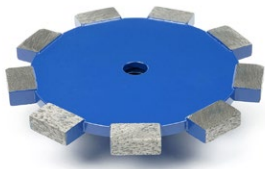
- Reinforced Concrete
- Concrete
- Vitrified Clay

Field of Application

- Milling of circumferential slots on laterals

Article-No.	d mm	h mm	Segments	Weight kg
20041 M14	85	27	6	0.3

N•TEC II® Disk milling cutter



Materials to be processed

- Reinforced Concrete
- Concrete
- Vitrified Clay

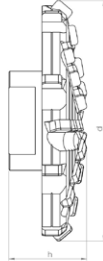
Field of Application

- Milling of circumferential slots on laterals

Article-No.	d mm	h mm	Segments	Weight kg
20042 M14	110	27	9	0.45



BLACK-LINE Mushroom-head milling cutter



Materials to be processed

- Concrete
- Deposits / Fouling
- UV CIPP
- Roots
- PVC
- Vitrified Clay
- Felt CIPP

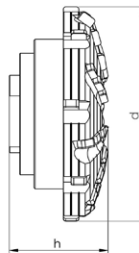
Note: Use on steel-reinforced concrete will destroy the cutting elements!

Field of Application

- Surface milling
- Removal of intruding obstacles
- Milling of offset socket transitions

Article-No.	Pipe Ø mm	d mm	h mm	Segments	Weight kg
BL 11426 M14	200-450	63	25	28	0.2
BL 11401 M14	300-600	75	27	32	0.25

BLACK-LINE Mushroom-head milling cutter spring-mounted



Materials to be processed

- Concrete
- Deposits / Fouling
- UV CIPP
- Roots
- PVC
- Vitrified Clay
- Felt CIPP

Note: Use on steel-reinforced concrete will destroy the cutting elements!

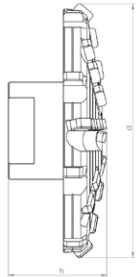
Field of Application

- Surface milling
- Removal of intruding obstacles
- Milling of offset socket transitions

Article-No.	Pipe Ø mm	d mm	h mm	Segments	Weight kg
BL 11458 M14	200-300	80	38	32	0.7
BL 11459 M14	300-450	80	38	32	0.7
BL 11460 M14	450-600	80	38	32	0.7



BLACK-LINE Mushroom-head milling cutter center cutting



Materials to be processed

- Concrete
- Deposits / Fouling
- UV CIPP
- Roots
- PVC
- Vitrified Clay
- Felt CIPP

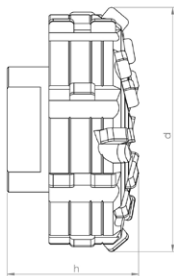
Note: Use on steel-reinforced concrete will destroy the cutting elements!

Field of Application

- Frontal milling
- Surface milling
- Removal of intruding obstacles
- Milling of offset socket transitions

Article-No.	Pipe Ø mm	d mm	h mm	Segments	Weight kg
BL 11427 M14	200-450	65	27	30	0.2
BL 11402 M14	300-600	75	33	34	0.3

BLACK-LINE Inlet milling cutter



Materials to be processed

- Concrete
- Deposits / Fouling
- UV CIPP
- Roots
- PVC
- Vitrified Clay
- Felt CIPP

Note: Use on steel-reinforced concrete will destroy the cutting elements!

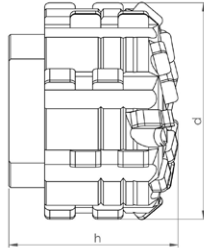
Field of Application

- Opening of laterals and inlet lines
- Preparatory milling of laterals
- Removal of intruding laterals
- Removal of intruding obstacles

Article-No.	d mm	h mm	Segments	Weight kg
BL 11409 M14	55	30	28	0.35



BLACK-LINE Inlet milling cutter



Materials to be processed

- Concrete
- Deposits / Fouling
- UV CIPP
- Roots
- PVC
- Vitrified Clay
- Felt CIPP

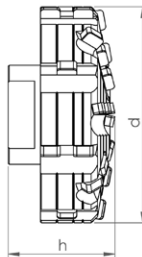
Note: Use on steel-reinforced concrete will destroy the cutting elements!

Field of Application

- Opening of laterals and inlet lines
- Preparatory milling of laterals
- Removal of intruding laterals
- Removal of intruding obstacles

Article-No.	d mm	h mm	Segments	Weight kg
BL 11451 M14	45	32	32	0.2

BLACK-LINE Inlet milling cutter center cutting



Materials to be processed

- Concrete
- Deposits / Fouling
- UV CIPP
- Roots
- PVC
- Vitrified Clay
- Felt CIPP

Note: Use on steel-reinforced concrete will destroy the cutting elements!

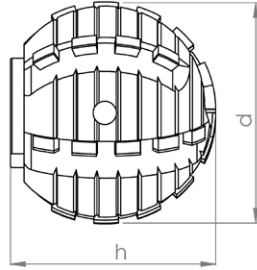
Field of Application

- Opening of laterals and inlet lines
- Preparatory milling of laterals
- Removal of intruding laterals
- Frontal milling
- Surface milling
- Removal of intruding obstacles

Article-No.	d mm	h mm	Segments	Weight kg
BL 11452 M14	70	32	34	0.4



BLACK-LINE Ball milling cutter



Materials to be processed

- UV CIPP
- Roots
- PVC
- Felt CIPP

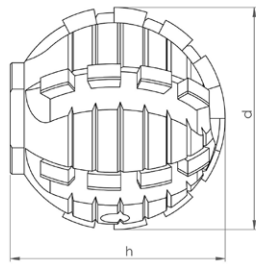
Note: Only suitable for processing CIPP liners and PVC and for cutting roots!

Field of Application

- Opening of laterals and inlet lines
- Removal of intruding obstacles

Article-No.	d mm	h mm	Segments	Weight kg
BL 11410 M14	50	45	30	0.4

BLACK-LINE Ball milling cutter



Materials to be processed

- UV CIPP
- Roots
- PVC
- Felt CIPP

Note: Only suitable for processing CIPP liners and PVC and for cutting roots!

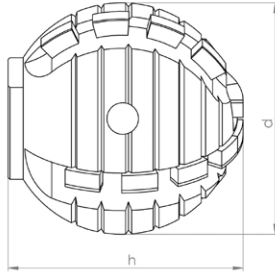
Field of Application

- Opening of laterals and inlet lines
- Removal of intruding obstacles

Article-No.	d mm	h mm	Segments	Weight kg
BL 11446 M14	40	42	26	0.25



BLACK-LINE Ball milling cutter



Materials to be processed

- UV CIPP
- Roots
- PVC
- Felt CIPP

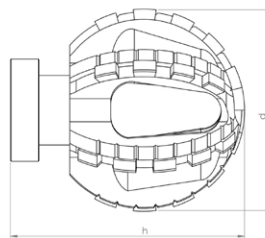
Note: Only suitable for processing CIPP liners and PVC and for cutting roots!

Field of Application

- Opening of laterals and inlet lines
- Removal of intruding obstacles

Article-No.	d mm	h mm	Segments	Weight kg
BL 11414 M14	40	42	18	0.25

BLACK-LINE Ball milling cutter Type ProView®



Materials to be processed

- UV CIPP
- Roots
- PVC
- Felt CIPP

Note: Only suitable for processing CIPP liners and PVC and for cutting roots!

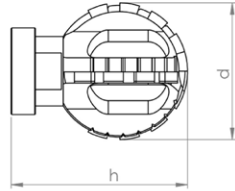
Field of Application

- Opening of laterals and inlet lines
- Removal of intruding obstacles

Article-No.	d mm	h mm	Segments	Weight kg
BL 11116 M14	50	57	30	0.2



BLACK-LINE Ball milling cutter Type ProView®



Materials to be processed

- UV CIPP
- Roots
- PVC
- Felt CIPP

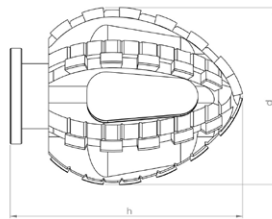
Note: Only suitable for processing CIPP liners and PVC and for cutting roots!

Field of Application

- Opening of laterals and inlet lines
- Removal of intruding obstacles

Article-No.	d mm	h mm	Segments	Weight kg
BL 11117 M14	40	51	18	0.15

BLACK-LINE Double-cone milling cutter Type ProView®



Materials to be processed

- UV CIPP
- Roots
- PVC
- Felt CIPP

Note: Only suitable for processing CIPP liners and PVC and for cutting roots!

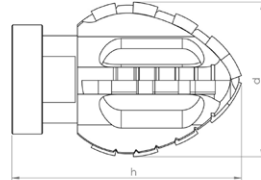
Field of Application

- Opening of laterals and inlet lines
- Removal of intruding obstacles

Article-No.	d mm	h mm	Segments	Weight kg
BL 11113 M14	45	60	34	0.16



BLACK-LINE Double-cone milling cutter Type ProView®



Materials to be processed

- UV CIPP
- Roots
- PVC
- Felt CIPP

Note: Only suitable for processing CIPP liners and PVC and for cutting roots!

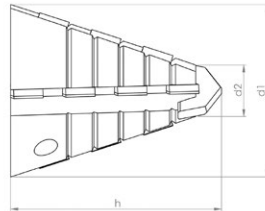
Field of Application

- Opening of laterals and inlet lines
- Removal of intruding obstacles

Article-No.	d mm	h mm	Segments	Weight kg
BL 11118 M14	36	53	16	0.15



linerCUT Pro® Tapered milling cutter with tungsten carbide tip



Materials to be processed

- UV CIPP
- Felt CIPP
- PVC

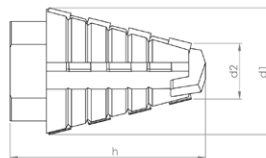
Note: Only suitable for processing CIPP liners and PVC!

Field of Application

- Opening of laterals and inlet lines

Article-No.	d1 mm	d2 mm	h mm	Segments	Weight kg
BL 11463 M14	40	18	47	14	0.14

linerCUT Pro® Tapered milling cutter with tungsten carbide tip



Materials to be processed

- UV CIPP
- Felt CIPP
- PVC

Note: Only suitable for processing CIPP liners and PVC!

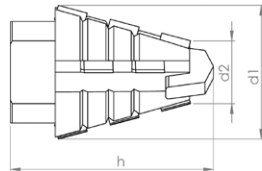
Field of Application

- Opening of laterals and inlet lines

Article-No.	d1 mm	d2 mm	h mm	Segments	Weight kg
BL 11437 M14	28	18	45	14	0.08



linerCUT Pro® Tapered milling cutter with tungsten carbide tip



Materials to be processed

- UV CIPP
- Felt CIPP
- PVC

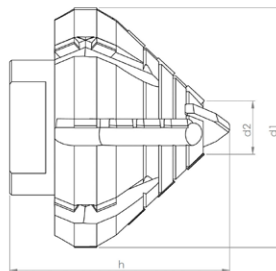
Note: Only suitable for processing CIPP liners and PVC!

Field of Application

- Opening of laterals and inlet lines

Article-No.	d1 mm	d2 mm	h mm	Segments	Weight kg
BL 11438 M14	30	18	35	10	0.06

linerCUT Pro® Taper/cylinder milling cutter with tungsten carbide tip



Materials to be processed

- UV CIPP
- Felt CIPP
- PVC

Note: Only suitable for processing CIPP liners and PVC!

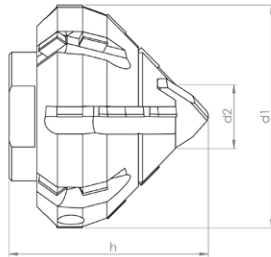
Field of Application

- Opening of laterals and inlet lines

Article-No.	d1 mm	d2 mm	h mm	Segments	Weight kg
BL 11441 M14	55	20	46	24	0.3



linerCUT Pro® Taper/cylinder milling cutter with tungsten carbide tip



Materials to be processed

- UV CIPP
- Felt CIPP
- PVC

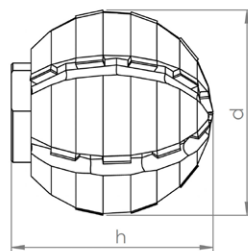
Note: Only suitable for processing CIPP liners and PVC!

Field of Application

- Opening of laterals and inlet lines

Article-No.	d1 mm	d2 mm	h mm	Segments	Weight kg
BL 11439 M14	45	20	40	22	0.2

linerCUT Pro® Ball milling cutter



Materials to be processed

- UV CIPP
- Felt CIPP
- PVC

Note: Only suitable for processing CIPP liners and PVC!

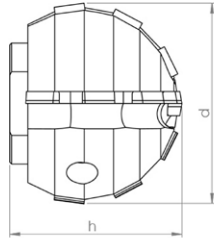
Field of Application

- Opening of laterals and inlet lines

Article-No.	d mm	h mm	Segments	Weight kg
BL 11444 M14	50	55	24	0.5



linerCUT Pro® Ball milling cutter



Materials to be processed

- UV CIPP
- Felt CIPP
- PVC

Note: Only suitable for processing CIPP liners and PVC!

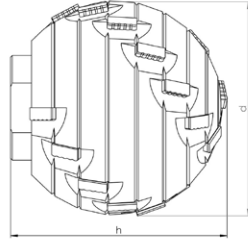
Field of Application

- Opening of laterals and inlet lines

Article-No.	d mm	h mm	Segments	Weight kg
BL 11443 M14	40	36	12	0.2



linerCUT Pro® 2.0 Ball milling cutter



Materials to be processed

- UV CIPP
- Felt CIPP
- PVC

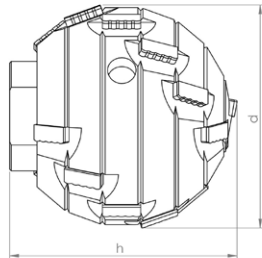
Note: Only suitable for processing CIPP liners and PVC!

Field of Application

- Opening of laterals and inlet lines

Article-No.	d mm	h mm	Segments	Weight kg
BL 11449 M14	50	52	22	0.5

linerCUT Pro® 2.0 Ball milling cutter



Materials to be processed

- UV CIPP
- Felt CIPP
- PVC

Note: Only suitable for processing CIPP liners and PVC!

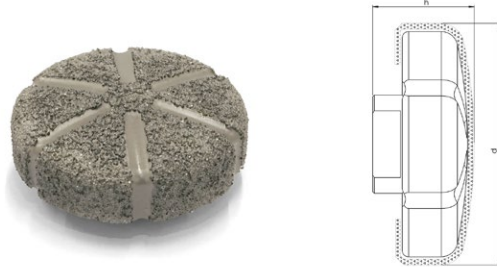
Field of Application

- Opening of laterals and inlet lines

Article-No.	d mm	h mm	Segments	Weight kg
BL 11448 M14	40	40	18	0.25



D•GRIT Inlet milling cutter



Materials to be processed

- UV CIPP
- Felt CIPP
- PVC

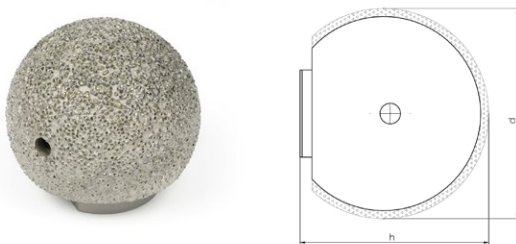
Note: Only suitable for processing CIPP liners and PVC!

Field of Application

- Opening of laterals and inlet lines
- CIPP liner finishing

Article-No.	d mm	h mm	Grit	Weight kg
70011 M14	70	30	Diamond	0.5

D•GRIT Ball milling cutter



Materials to be processed

- UV CIPP
- Felt CIPP
- PVC

Note: Only suitable for processing CIPP liners and PVC!

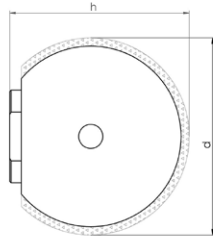
Field of Application

- Opening of laterals and inlet lines
- CIPP liner finishing

Article-No.	d mm	h mm	Grit	Weight kg
70002 M14	50	48	Diamond	0.45



D•GRIT Ball milling cutter



Materials to be processed

- UV CIPP
- Felt CIPP
- PVC

Note: Only suitable for processing CIPP liners and PVC!

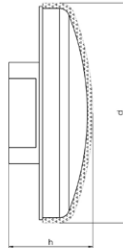
Field of Application

- Opening of laterals and inlet lines
- CIPP liner finishing

Article-No.	d mm	h mm	Grit	Weight kg
70001 M14	40	38	Diamond	0.25



HM•LINE Mushroom-head milling cutter



Materials to be processed

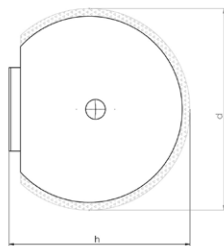
- UV CIPP
- Roots
- PVC
- Felt CIPP

Field of Application

- Removal of intruding obstacles
- CIPP liner finishing

Article-No.	d mm	h mm	Grit	Weight kg
50003 M14	67	30	Carbide	0.3

HM•LINE Ball milling cutter



Materials to be processed

- UV CIPP
- Roots
- PVC
- Felt CIPP

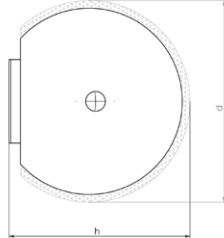
Field of Application

- Opening of laterals and inlet lines
- Removal of intruding obstacles
- CIPP liner finishing

Article-No.	d mm	h mm	Grit	Weight kg
50001 M14	50	50	Carbide	0.6



HM•LINE Ball milling cutter



Materials to be processed

- UV CIPP
- PVC
- Roots
- Felt CIPP

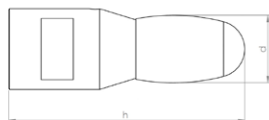
Field of Application

- Opening of laterals and inlet lines
- Removal of intruding obstacles
- CIPP liner finishing

Article-No.	d mm	h mm	Grit	Weight kg
50002 M14	40	42	Carbide	0.3



VHM•LINE oval shaped



Materials to be processed

- Cast Iron
- Steel

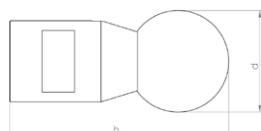
Note: Use on concrete or vitrified clay will destroy the cutting elements!

Field of Application

- Removal of intruding obstacles

Article-No.	d mm	h mm	Segments	Weight kg
60007 M14	16	62	1	0.15

VHM•LINE ball shaped



Materials to be processed

- Cast Iron
- Steel

Note: Use on concrete or vitrified clay will destroy the cutting elements!

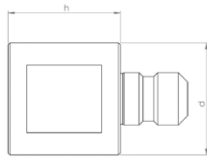
Field of Application

- Removal of intruding obstacles

Article-No.	d mm	h mm	Segments	Weight kg
60008 M14	25	60	1	0.15



Extension 30 mm



Description

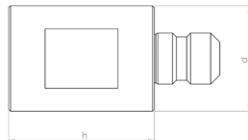
CNC fabricated tool extension for increased working radius of robot arm.

Specification

Stainless steel

Article-No.	d mm	h mm	Weight kg
90120 M14	30	30	0.15

Extension 40 mm



Description

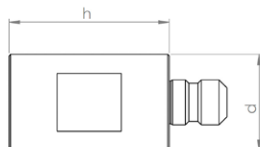
CNC fabricated tool extension for increased working radius of robot arm.

Specification

Stainless steel

Article-No.	d mm	h mm	Weight kg
90121 M14	30	40	0.2

Extension 50 mm



Description

CNC fabricated tool extension for increased working radius of robot arm.

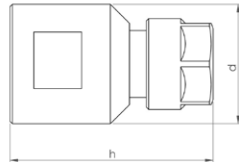
Specification

Stainless steel

Article-No.	d mm	h mm	Weight kg
90122 M14	30	50	0.25



Adapter for mounting commercially available shank tools Ø 6 mm



Description

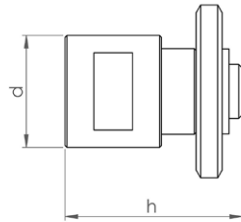
CNC fabricated collet chuck adapter for mounting commercially available shank tools.
e.g. burrs, brushes, flap grinders etc...
Mounting: Shank Ø 6-6,5 mm

Specification

Stainless steel

Article-No.	d mm	h mm	Weight kg
90171 M14	30	40	0.1

Adapter for mounting of 3 cutting discs



Description

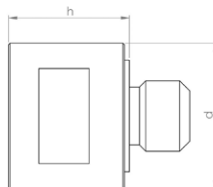
CNC fabricated adapter for mounting of 3 cutting discs.
Mounting shaft Ø 22,2 mm
includes cutting discs and locking disc
NOTE: This adapter cannot be used to mount a single cutting disc!

Specification

Stainless steel

Article-No.	d mm	h mm	Weight kg
90168 M14	30	46	0.2

Adapter for mounting of brushes and cutting discs



Description

CNC fabricated adapter for mounting of brushes and cutting discs.
Thread: M14 (14 mm O.D.)
Centering ring for cutting disc: Ø 22,2 mm
NOTE: When mounting wheel brushes or cutting discs, a locking disc is also required!

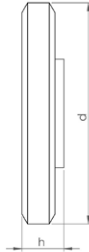
Specification

Stainless steel

Article-No.	d mm	h mm	Weight kg
90112 M14	30	25	0.11



Locking disc for mounting of wheel brushes and cutting discs



Description

Thread: M14 (14 mm O.D.)

NOTE: Wheel brushes and cutting discs must be mounted using matching adapters!

Specification

Steel, burnished

Article-No.	d mm	h mm	Weight kg
SP 90110	45	8,5	0.07

Mounted point-cylindrical



Description

Corundum mounted point, for working on steel and cast iron.

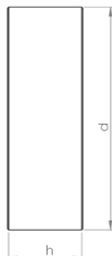
NOTE: Only useable with adapter!

Specification

Corundum

Article-No.	d mm	h mm	Weight kg
81002	32	32	0.08

Cup wheel Ø 80 mm



Description

Corundum cup wheel, for working on steel and cast iron.

Mounting hole Ø 22,2 mm

NOTE: May be used only with matching adapter and locking disc!

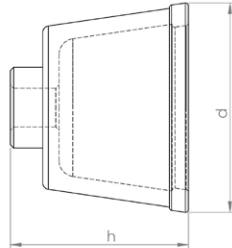
Specification

Corundum

Article-No.	d mm	h mm	Weight kg
81003	80	28	0.2



Cup brush Ø 65 mm



Description

Premium rotary wire brush for finishing work on CIPP liners and PVC.

Mounting hole M14 (14 mm thread O.D.)

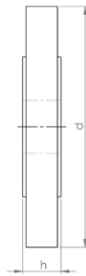
NOTE: May be used only with matching adapter!

Specification

Wire thickness: Ø 0,8 mm

Article-No.	d mm	h mm	Weight kg
80020	65	50	0.25

Wheel brush Ø 100 mm



Description

Premium rotary wire brush for finishing work on CIPP liners and PVC.

Mounting hole Ø 22,2 mm

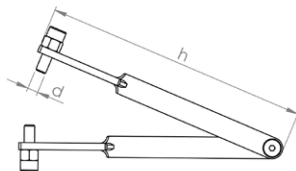
NOTE: May be used only with matching adapter and locking disc!

Specification

Wire thickness: Ø 0,5 mm

Article-No.	d mm	h mm	Weight kg
80018	100	15	0.2

Pin-tipped tongs for safe tool changeover



Description

The tongs are fitted with pin (with adjustable gripping depth) which are inserted into the gripping holes of the milling tools, permitting safe changeover without risking damage to the tooling.


Specification

Steel

Article-No.	d mm	h mm	Weight kg
92002	5	150	0.125



N•TEC II®



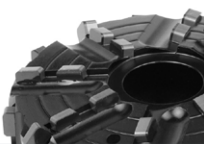
Field-Proven Standard Diamond Tools with Outstanding Value for Purchase Investment

Materials to be processed

- Reinforced Concrete
- Concrete
- Deposits / Fouling
- Cast Iron
- Vitrified Clay

Page 61

BLACK•LINE




High-Tech Milling Tools made of PCD with Unbeatable Cutting and Stock Removal Performance for Almost Every Material

Materials to be processed

- UV CIPP
- Roots
- PVC
- Felt CIPP

Page 63

linerCUT Pro®




Absolutely Smooth-Running and Precise PCD Cutting Tools for Opening CIPP - Optimized for UV CIPP -

Materials to be processed

- UV CIPP
- PVC
- Felt CIPP

Page 70

linerCUT Pro® 2.0




Absolutely Smooth-Running and Precise PCD Cutting Tools for Opening CIPP - All Kinds of CIPP and PVC -

Materials to be processed

- UV CIPP
- PVC
- Felt CIPP

Page 72

D•GRIT



Milling Tools with Diamond Granules for Opening CIPP - Optimal for UV CIPP and Lined Cast Iron Pipes -

Materials to be processed

- UV CIPP
- PVC
- Felt CIPP

Page 73

HM•LINE




Cost-Efficient Milling Tools with Carbide Granulate Tipping for Opening and Reworking CIPP

Materials to be processed

- UV CIPP
- Roots
- PVC
- Felt CIPP

Page 74

VHM•LINE



Special Milling Tools for Processing Steel and Cast Iron

Materials to be processed

- Cast Iron
- Steel

Page 76



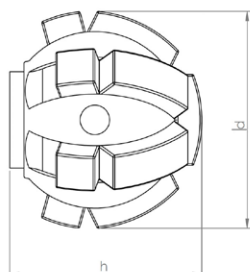
Functional Accessories

High-quality brushes, adapters, extensions, etc.

Page 77



N•TEC II® Ball milling cutter



Materials to be processed

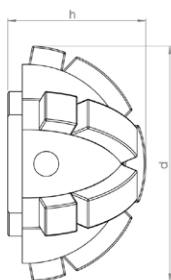
- Reinforced Concrete
- Concrete
- Deposits / Fouling
- Cast Iron
- Vitrified Clay

Field of Application

- Preparatory milling of laterals
- Removal of intruding laterals
- Removal of intruding obstacles

Article-No.	d mm	h mm	Segments	Weight kg
20021 M8	40	37	13	0.2

N•TEC II® Half-ball milling cutter



Materials to be processed

- Reinforced Concrete
- Concrete
- Deposits / Fouling
- Cast Iron
- Vitrified Clay

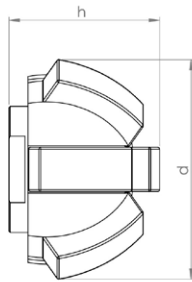
Field of Application

- Preparatory milling of laterals
- Removal of intruding laterals
- Frontal milling
- Removal of intruding obstacles

Article-No.	d mm	h mm	Segments	Weight kg
20034 M8	50	29	13	0.15



N•TEC II Half-ball milling cutter



Materials to be processed

- Reinforced Concrete
- Concrete
- Deposits / Fouling
- Cast Iron
- Vitrified Clay

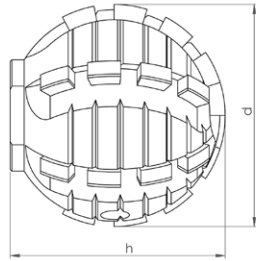
Field of Application

- Preparatory milling of laterals
- Removal of intruding laterals
- Frontal milling
- Removal of intruding obstacles

Article-No.	d mm	h mm	Segments	Weight kg
20035 M8	36	25	7	0.1



BLACK-LINE Ball milling cutter



Materials to be processed

- UV CIPP
- Roots
- PVC
- Felt CIPP

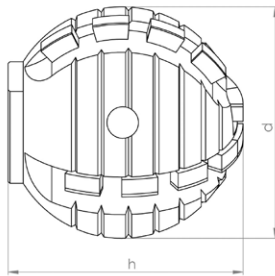
Note: Only suitable for processing CIPP liners and PVC and for cutting roots!

Field of Application

- Opening of laterals and inlet lines
- Removal of intruding obstacles

Article-No.	d mm	h mm	Segments	Weight kg
BL 11446 M8	40	42	26	0.25

BLACK-LINE Ball milling cutter



Materials to be processed

- UV CIPP
- Roots
- PVC
- Felt CIPP

Note: Only suitable for processing CIPP liners and PVC and for cutting roots!

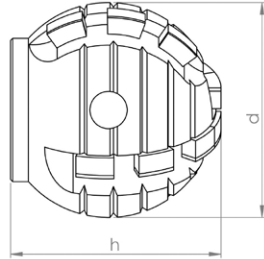
Field of Application

- Opening of laterals and inlet lines
- Removal of intruding obstacles

Article-No.	d mm	h mm	Segments	Weight kg
BL 11414 M8	40	42	18	0.25



BLACK-LINE Ball milling cutter



Materials to be processed

- UV CIPP
- Roots
- PVC
- Felt CIPP

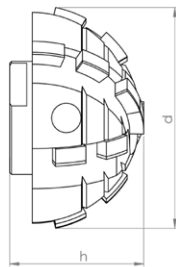
Note: Use on steel-reinforced concrete will destroy the cutting elements!

Field of Application

- Opening of laterals and inlet lines
- Removal of intruding obstacles

Article-No.	d mm	h mm	Segments	Weight kg
BL 11408 M8	30	32	14	0.1

BLACK-LINE Half-ball milling cutter



Materials to be processed

- UV CIPP
- Roots
- PVC
- Felt CIPP

Note: Use on steel-reinforced concrete will destroy the cutting elements!

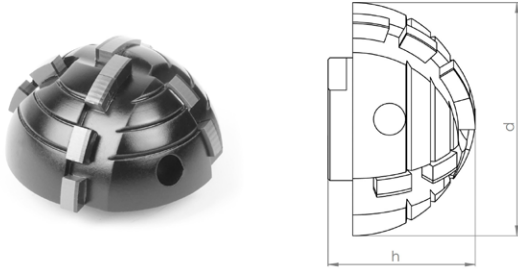
Field of Application

- Opening of laterals and inlet lines
- Removal of intruding obstacles

Article-No.	d mm	h mm	Segments	Weight kg
BL 11465 M8	40	25	16	0.15



BLACK-LINE Half-ball milling cutter



Materials to be processed

- UV CIPP
- PVC
- Roots
- Felt CIPP

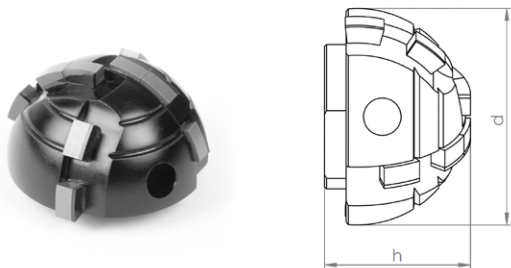
Note: Use on steel-reinforced concrete will destroy the cutting elements!

Field of Application

- Opening of laterals and inlet lines
- Removal of intruding obstacles

Article-No.	d mm	h mm	Segments	Weight kg
BL 11428 M8	40	25	12	0.07

BLACK-LINE Half-ball milling cutter



Materials to be processed

- UV CIPP
- PVC
- Roots
- Felt CIPP

Note: Use on steel-reinforced concrete will destroy the cutting elements!

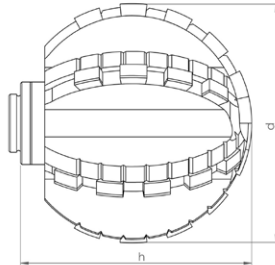
Field of Application

- Opening of laterals and inlet lines
- Removal of intruding obstacles

Article-No.	d mm	h mm	Segments	Weight kg
BL 11429 M8	30	20	8	0.06



BLACK-LINE Ball milling cutter Type ProView®



Materials to be processed

- UV CIPP
- Roots
- PVC
- Felt CIPP

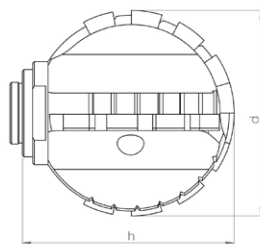
Note: Only suitable for processing CIPP liners and PVC and for cutting roots!

Field of Application

- Opening of laterals and inlet lines
- Removal of intruding obstacles

Article-No.	d mm	h mm	Segments	Weight kg
BL 11108 M8	50	46	30	0.15

BLACK-LINE Ball milling cutter Type ProView®



Materials to be processed

- UV CIPP
- Roots
- PVC
- Felt CIPP

Note: Only suitable for processing CIPP liners and PVC and for cutting roots!

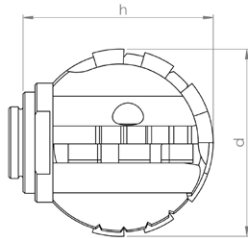
Field of Application

- Opening of laterals and inlet lines
- Removal of intruding obstacles

Article-No.	d mm	h mm	Segments	Weight kg
BL 11103 M8	40	38	18	0.15



BLACK-LINE Ball milling cutter Type ProView®



Materials to be processed

- UV CIPP
- Roots
- PVC
- Felt CIPP

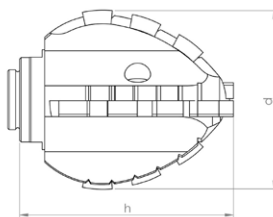
Note: Only suitable for processing CIPP liners and PVC and for cutting roots!

Field of Application

- Opening of laterals and inlet lines
- Removal of intruding obstacles

Article-No.	d mm	h mm	Segments	Weight kg
BL 11101 M8	32	30	14	0.06

BLACK-LINE Double-cone milling cutter Type ProView®



Materials to be processed

- UV CIPP
- Roots
- PVC
- Felt CIPP

Note: Only suitable for processing CIPP liners and PVC and for cutting roots!

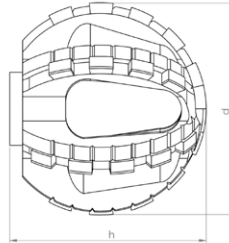
Field of Application

- Opening of laterals and inlet lines

Article-No.	d mm	h mm	Segments	Weight kg
BL 11107 M8	36	41	16	0.1



BLACK-LINE Ball milling cutter Type ProView®



Materials to be processed

- UV CIPP
- Roots
- PVC
- Felt CIPP

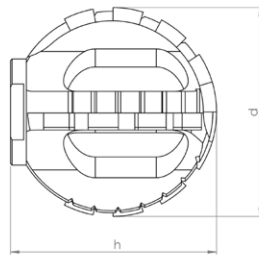
Note: Only suitable for processing CIPP liners and PVC and for cutting roots!

Field of Application

- Opening of laterals and inlet lines
- Removal of intruding obstacles

Article-No.	d mm	h mm	Segments	Weight kg
BL 11114 M8	50	46	30	0.15

BLACK-LINE Ball milling cutter Type ProView®



Materials to be processed

- UV CIPP
- Roots
- PVC
- Felt CIPP

Note: Only suitable for processing CIPP liners and PVC and for cutting roots!

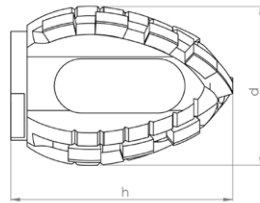
Field of Application

- Opening of laterals and inlet lines
- Removal of intruding obstacles

Article-No.	d mm	h mm	Segments	Weight kg
BL 11110 M8	40	38	18	0.15



BLACK-LINE Double-cone milling cutter Type ProView®



Materials to be processed

- UV CIPP
- Roots
- PVC
- Felt CIPP

Note: Only suitable for processing CIPP liners and PVC and for cutting roots!

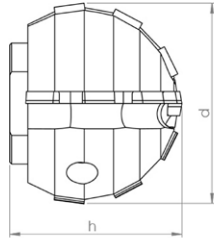
Field of Application

- Opening of laterals and inlet lines

Article-No.	d mm	h mm	Segments	Weight kg
BL 11112 M8	36	41	16	0.1



linerCUT Pro® Ball milling cutter



Materials to be processed

- UV CIPP
- Felt CIPP
- PVC

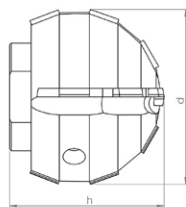
Note: Only suitable for processing CIPP liners and PVC!

Field of Application

- Opening of laterals and inlet lines

Article-No.	d mm	h mm	Segments	Weight kg
BL 11443 M8	40	36	12	0.2

linerCUT Pro® Ball milling cutter



Materials to be processed

- UV CIPP
- Felt CIPP
- PVC

Note: Only suitable for processing CIPP liners and PVC!

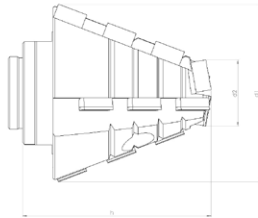
Field of Application

- Opening of laterals and inlet lines

Article-No.	d mm	h mm	Segments	Weight kg
BL 11442 M8	30	29	14	0.1



linerCUT Pro® Tapered milling cutter with PCD tip



Materials to be processed

- UV CIPP
- Felt CIPP
- PVC

Note: Only suitable for processing CIPP liners and PVC!

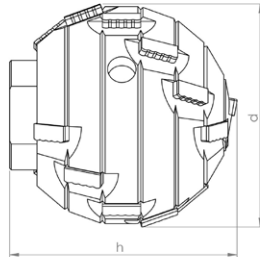
Field of Application

- Opening of laterals and inlet lines

Article-No.	d1 mm	d2 mm	h mm	Segments	Weight kg
BL 11470 M8	30	10	30	14	0.06



linerCUT Pro^{2.0} Ball milling cutter



Materials to be processed

- UV CIPP
- Felt CIPP
- PVC

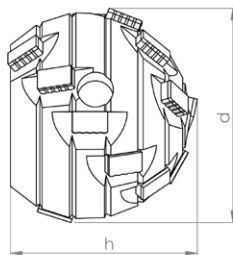
Note: Only suitable for processing CIPP liners and PVC!

Field of Application

- Opening of laterals and inlet lines

Article-No.	d mm	h mm	Segments	Weight kg
BL 11448 M8	40	40	18	0.25

linerCUT Pro^{2.0} Ball milling cutter



Materials to be processed

- UV CIPP
- Felt CIPP
- PVC

Note: Only suitable for processing CIPP liners and PVC!

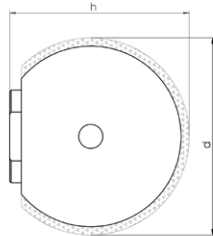
Field of Application

- Opening of laterals and inlet lines

Article-No.	d mm	h mm	Segments	Weight kg
BL 11447 M8	30	25	16	0.1



D•GRIT Ball milling cutter



Materials to be processed

- UV CIPP
- PVC
- Felt CIPP

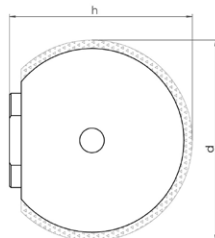
Note: Only suitable for processing CIPP liners and PVC!

Field of Application

- Opening of laterals and inlet lines
- CIPP liner finishing

Article-No.	d mm	h mm	Grit	Weight kg
70001 M8	40	38	Diamond	0.25

D•GRIT Ball milling cutter



Materials to be processed

- UV CIPP
- PVC
- Felt CIPP

Note: Only suitable for processing CIPP liners and PVC!

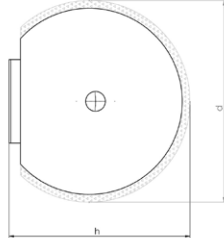
Field of Application

- Opening of laterals and inlet lines
- CIPP liner finishing

Article-No.	d mm	h mm	Grit	Weight kg
70003 M8	30	30	Diamond	0.15



HM•LINE Ball milling cutter



Materials to be processed

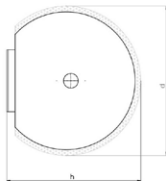
- UV CIPP
- Roots
- PVC
- Felt CIPP

Field of Application

- Opening of laterals and inlet lines
- Removal of intruding obstacles
- CIPP liner finishing

Article-No.	d mm	h mm	Grit	Weight kg
50002 M8	40	42	Carbide	0.3

HM•LINE Ball milling cutter



Materials to be processed

- UV CIPP
- Roots
- PVC
- Felt CIPP

Field of Application

- Opening of laterals and inlet lines
- Removal of intruding obstacles
- CIPP liner finishing

Article-No.	d mm	h mm	Grit	Weight kg
50005 M8	30	32	Carbide	0.15



HM•LINE Half-ball milling cutter



Materials to be processed

- UV CIPP
- Roots
- PVC
- Felt CIPP

Field of Application

- Opening of laterals and inlet lines
- Removal of intruding obstacles
- CIPP liner finishing

Article-No.	d mm	h mm	Grit	Weight kg
50004 M8	40	30	Carbide	0.15

HM•LINE Half-ball milling cutter



Materials to be processed

- UV CIPP
- Roots
- PVC
- Felt CIPP

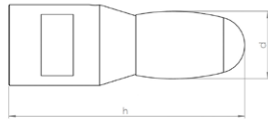
Field of Application

- Opening of laterals and inlet lines
- Removal of intruding obstacles
- CIPP liner finishing

Article-No.	d mm	h mm	Weight kg
50009 M8	30	20	0.09



VHM•LINE oval shaped



Materials to be processed

- Cast Iron
- Steel

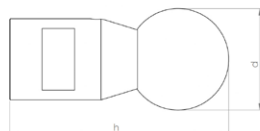
Note: Use on concrete or vitrified clay will destroy the cutting elements!

Field of Application

- Removal of intruding obstacles

Article-No.	d mm	h mm	Segments	Weight kg
60001 M8	16	55	1	0.15

VHM•LINE ball shaped



Materials to be processed

- Cast Iron
- Steel

Note: Use on concrete or vitrified clay will destroy the cutting elements!

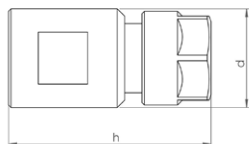
Field of Application

- Removal of intruding obstacles

Article-No.	d mm	h mm	Segments	Weight kg
60002 M8	25	56	1	0.15



Adapter for mounting commercially available shank tools Ø 6 mm



Description

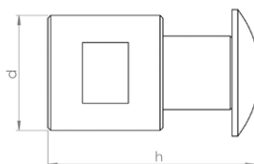
CNC fabricated collet chuck adapter for mounting commercially available shank tools.
e.g. burrs, brushes, flap grinders etc...
Mounting: Shank Ø 6-6,5 mm

Specification

Stainless steel

Article-No.	d mm	h mm	Weight kg
90172 M8	20	40	0.07

Adapter for mounting of 2 wheel brushes



Description

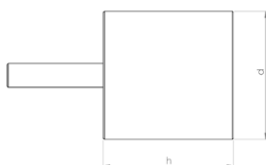
CNC fabricated adapter for mounting of 2 wheel brushes.
Mounting shaft Ø 12,7 mm
includes locking screw and cupped washer
NOTE: This adapter cannot be used to mount a single brush!

Specification

Stainless steel

Article-No.	d mm	h mm	Weight kg
90144 M8	20	32	0.05

Mounted point-cylindrical



Description

Corundum mounted point, for working on steel and cast iron.
NOTE: Only useable with adapter!

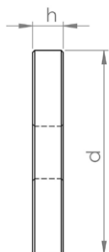
Specification

Corundum

Article-No.	d mm	h mm	Weight kg
81002	32	32	0.08



Wheel brush Ø 45 mm



Description

Premium rotary wire brushes for finishing work on CIPP liners and PVC.

Mounting hole Ø 12,7 mm

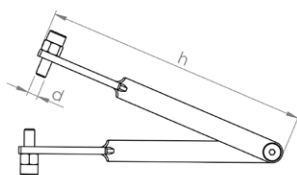
NOTE: May be used only with matching adapter! Packing unit: 2 pieces

Specification

Wire thickness: Ø 0,3 mm

Article-No.	d mm	h mm	Weight kg
80025	45	8	0.05

Pin-tipped tongs for safe tool changeover



Description

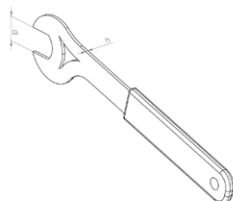
The tongs are fitted with pin (with adjustable gripping depth) witch are inserted into the gripping holes of the milling tools, permitting safe changeover without risking damage to the tooling.

Specification

Steel

Article-No.	d mm	h mm	Weight kg
92002	5	150	0.125

Open-end wrench 17 mm



Description

The flat design of the wrench is particularly well suited for milling tools with low base height.


Specification

Steel

Article-No.	d mm	h mm	Weight kg
92001 SW17	17	2	0.08



N•TEC II®



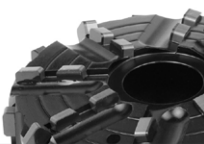
Field-Proven Standard Diamond Tools with Outstanding Value for Purchase Investment

Materials to be processed

- Reinforced Concrete
- Concrete
- Deposits / Fouling
- Cast Iron
- Vitrified Clay

Page 81

BLACK•LINE




High-Tech Milling Tools made of PCD with Unbeatable Cutting and Stock Removal Performance for Almost Every Material

Materials to be processed

- UV CIPP
- Roots
- PVC
- Felt CIPP

Page 83

linerCUT Pro®




Absolutely Smooth-Running and Precise PCD Cutting Tools for Opening CIPP - Optimized for UV CIPP -

Materials to be processed

- UV CIPP
- PVC
- Felt CIPP

Page 90

linerCUT Pro® 2.0




Absolutely Smooth-Running and Precise PCD Cutting Tools for Opening CIPP - All Kinds of CIPP and PVC -

Materials to be processed

- UV CIPP
- PVC
- Felt CIPP

Page 91

D•GRIT



Milling Tools with Diamond Granules for Opening CIPP - Optimal for UV CIPP and Lined Cast Iron Pipes -

Materials to be processed

- UV CIPP
- PVC
- Felt CIPP

Page 92

HM•LINE



Cost-Efficient Milling Tools with Carbide Granulate Tipping for Opening and Reworking CIPP

Materials to be processed

- UV CIPP
- Roots
- PVC
- Felt CIPP

Page 94

VHM•LINE



Special Milling Tools for Processing Steel and Cast Iron

Materials to be processed

- Cast Iron
- Steel

Page 97



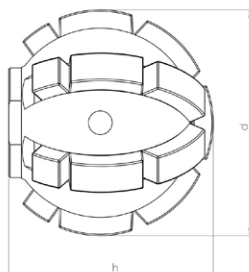
Functional Accessories

High-quality brushes, adapters, extensions, etc.

Page 98



N•TEC II® Ball milling cutter



Materials to be processed

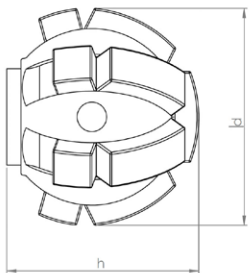
- Reinforced Concrete
- Concrete
- Deposits / Fouling
- Cast Iron
- Vitrified Clay

Field of Application

- Preparatory milling of laterals
- Removal of intruding laterals
- Removal of intruding obstacles

Article-No.	d mm	h mm	Segments	Weight kg
20020 3/8"UNF	50	46	19	0.3

N•TEC II® Ball milling cutter



Materials to be processed

- Reinforced Concrete
- Concrete
- Deposits / Fouling
- Cast Iron
- Vitrified Clay

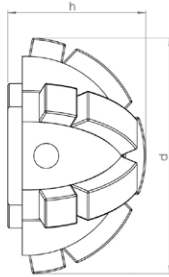
Field of Application

- Preparatory milling of laterals
- Removal of intruding laterals
- Removal of intruding obstacles

Article-No.	d mm	h mm	Segments	Weight kg
20021 3/8"UNF	40	37	13	0.2



N•TEC II® Half-ball milling cutter



Materials to be processed

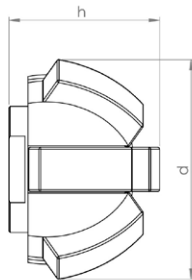
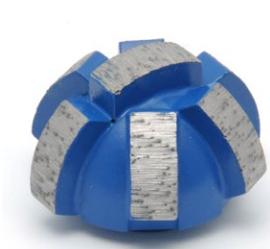
- Reinforced Concrete
- Concrete
- Deposits / Fouling
- Cast Iron
- Vitrified Clay

Field of Application

- Preparatory milling of laterals
- Removal of intruding laterals
- Frontal milling
- Removal of intruding obstacles

Article-No.	d mm	h mm	Segments	Weight kg
20034 3/8"UNF	50	29	13	0.15

N•TEC II® Half-ball milling cutter



Materials to be processed

- Reinforced Concrete
- Concrete
- Deposits / Fouling
- Cast Iron
- Vitrified Clay

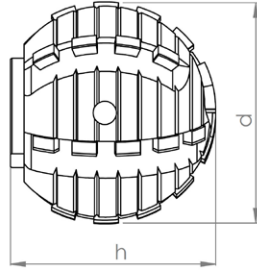
Field of Application

- Preparatory milling of laterals
- Removal of intruding laterals
- Frontal milling
- Removal of intruding obstacles

Article-No.	d mm	h mm	Segments	Weight kg
20035 3/8"UNF	36	25	7	0.1



BLACK-LINE Ball milling cutter



Materials to be processed

- UV CIPP
- Roots
- PVC
- Felt CIPP

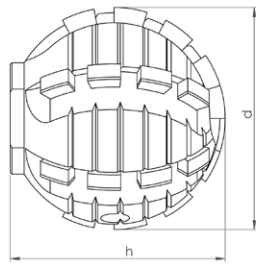
Note: Only suitable for processing CIPP liners and PVC and for cutting roots!

Field of Application

- Opening of laterals and inlet lines
- Removal of intruding obstacles

Article-No.	d mm	h mm	Segments	Weight kg
BL 11410 3/8"UNF	50	45	30	0.4

BLACK-LINE Ball milling cutter



Materials to be processed

- UV CIPP
- Roots
- PVC
- Felt CIPP

Note: Only suitable for processing CIPP liners and PVC and for cutting roots!

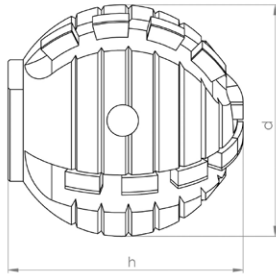
Field of Application

- Opening of laterals and inlet lines
- Removal of intruding obstacles

Article-No.	d mm	h mm	Segments	Weight kg
BL 11446 3/8"UNF	40	42	26	0.25



BLACK-LINE Ball milling cutter



Materials to be processed

- UV CIPP
- Roots
- PVC
- Felt CIPP

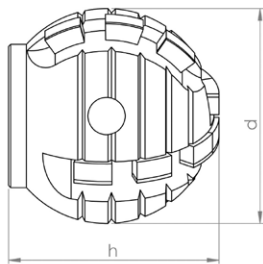
Note: Only suitable for processing CIPP liners and PVC and for cutting roots!

Field of Application

- Opening of laterals and inlet lines
- Removal of intruding obstacles

Article-No.	d mm	h mm	Segments	Weight kg
BL 11414 3/8"UNF	40	42	18	0.25

BLACK-LINE Ball milling cutter



Materials to be processed

- UV CIPP
- Roots
- PVC
- Felt CIPP

Note: Use on steel-reinforced concrete will destroy the cutting elements!

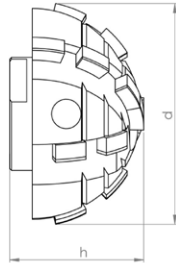
Field of Application

- Opening of laterals and inlet lines
- Removal of intruding obstacles

Article-No.	d mm	h mm	Segments	Weight kg
BL 11408 3/8"UNF	30	32	14	0.1



BLACK-LINE Half-ball milling cutter



Materials to be processed

- UV CIPP
- PVC
- Roots
- Felt CIPP

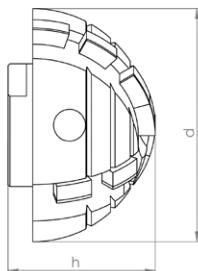
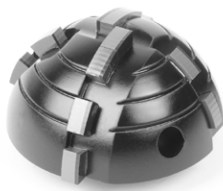
Note: Use on steel-reinforced concrete will destroy the cutting elements!

Field of Application

- Opening of laterals and inlet lines
- Removal of intruding obstacles

Article-No.	d mm	h mm	Segments	Weight kg
BL 11465 3/8"UNF	40	25	16	0.15

BLACK-LINE Half-ball milling cutter



Materials to be processed

- UV CIPP
- PVC
- Roots
- Felt CIPP

Note: Use on steel-reinforced concrete will destroy the cutting elements!

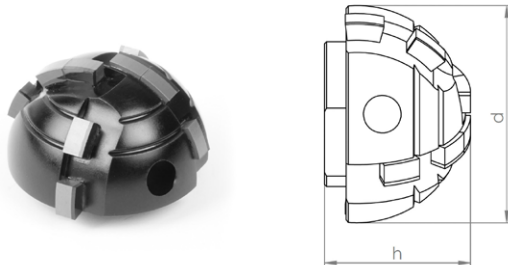
Field of Application

- Opening of laterals and inlet lines
- Removal of intruding obstacles

Article-No.	d mm	h mm	Segments	Weight kg
BL 11428 3/8"UNF	40	25	12	0.07



BLACK-LINE Half-ball milling cutter



Materials to be processed

- UV CIPP
- Roots
- PVC
- Felt CIPP

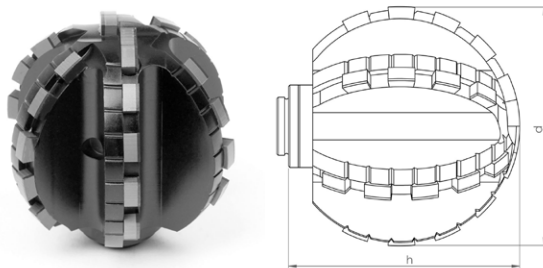
Note: Use on steel-reinforced concrete will destroy the cutting elements!

Field of Application

- Opening of laterals and inlet lines
- Removal of intruding obstacles

Article-No.	d mm	h mm	Segments	Weight kg
BL 11429 3/8"UNF	30	20	8	0.06

BLACK-LINE Ball milling cutter Type ProView®



Materials to be processed

- UV CIPP
- Roots
- PVC
- Felt CIPP

Note: Only suitable for processing CIPP liners and PVC and for cutting roots!

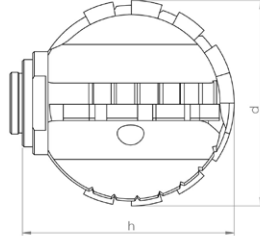
Field of Application

- Opening of laterals and inlet lines
- Removal of intruding obstacles

Article-No.	d mm	h mm	Segments	Weight kg
BL 11108 3/8"UNF	50	46	30	0.15



BLACK-LINE Ball milling cutter Type ProView®



Materials to be processed

- UV CIPP
- Roots
- PVC
- Felt CIPP

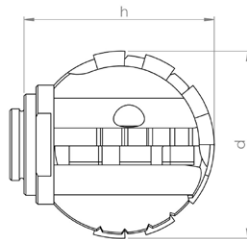
Note: Only suitable for processing CIPP liners and PVC and for cutting roots!

Field of Application

- Opening of laterals and inlet lines
- Removal of intruding obstacles

Article-No.	d mm	h mm	Segments	Weight kg
BL 11103 3/8"UNF	40	38	18	0.15

BLACK-LINE Ball milling cutter Type ProView®



Materials to be processed

- UV CIPP
- Roots
- PVC
- Felt CIPP

Note: Only suitable for processing CIPP liners and PVC and for cutting roots!

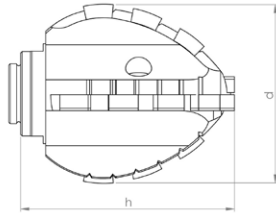
Field of Application

- Opening of laterals and inlet lines
- Removal of intruding obstacles

Article-No.	d mm	h mm	Segments	Weight kg
BL 11101 3/8"UNF	32	30	14	0.06



BLACK-LINE Double-cone milling cutter Type ProView®



Materials to be processed

- UV CIPP
- Roots
- PVC
- Felt CIPP

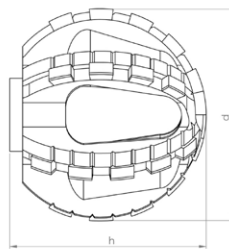
Note: Only suitable for processing CIPP liners and PVC and for cutting roots!

Field of Application

- Opening of laterals and inlet lines

Article-No.	d mm	h mm	Segments	Weight kg
BL 11107 3/8"UNF	36	41	16	0.1

BLACK-LINE Ball milling cutter Type ProView®



Materials to be processed

- UV CIPP
- Roots
- PVC
- Felt CIPP

Note: Only suitable for processing CIPP liners and PVC and for cutting roots!

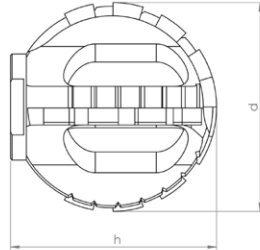
Field of Application

- Opening of laterals and inlet lines
- Removal of intruding obstacles

Article-No.	d mm	h mm	Segments	Weight kg
BL 11114 3/8"UNF	50	46	30	0.15



BLACK-LINE Ball milling cutter Type ProView®



Materials to be processed

- UV CIPP
- Roots
- PVC
- Felt CIPP

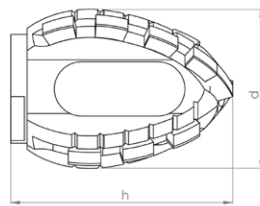
Note: Only suitable for processing CIPP liners and PVC and for cutting roots!

Field of Application

- Opening of laterals and inlet lines
- Removal of intruding obstacles

Article-No.	d mm	h mm	Segments	Weight kg
BL 11110 3/8"UNF	40	38	18	0.15

BLACK-LINE Double-cone milling cutter Type ProView®



Materials to be processed

- UV CIPP
- Roots
- PVC
- Felt CIPP

Note: Only suitable for processing CIPP liners and PVC and for cutting roots!

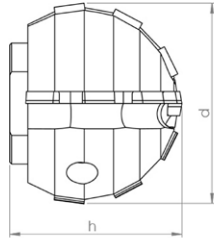
Field of Application

- Opening of laterals and inlet lines

Article-No.	d mm	h mm	Segments	Weight kg
BL 11112 3/8"UNF	36	41	16	0.1



linerCUT Pro® Ball milling cutter



Materials to be processed

- UV CIPP
- Felt CIPP
- PVC

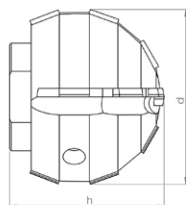
Note: Only suitable for processing CIPP liners and PVC!

Field of Application

- Opening of laterals and inlet lines

Article-No.	d mm	h mm	Segments	Weight kg
BL 11443 3/8"UNF	40	36	12	0.2

linerCUT Pro® Ball milling cutter



Materials to be processed

- UV CIPP
- Felt CIPP
- PVC

Note: Only suitable for processing CIPP liners and PVC!

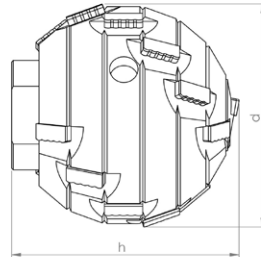
Field of Application

- Opening of laterals and inlet lines

Article-No.	d mm	h mm	Segments	Weight kg
BL 11442 3/8"UNF	30	29	14	0.1



linerCUT Pro^{2.0} Ball milling cutter



Materials to be processed

- UV CIPP
- Felt CIPP
- PVC

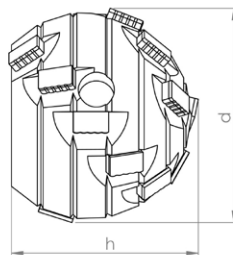
Note: Only suitable for processing CIPP liners and PVC!

Field of Application

- Opening of laterals and inlet lines

Article-No.	d mm	h mm	Segments	Weight kg
BL 11448 3/8"UNF	40	40	18	0.25

linerCUT Pro^{2.0} Ball milling cutter



Materials to be processed

- UV CIPP
- Felt CIPP
- PVC

Note: Only suitable for processing CIPP liners and PVC!

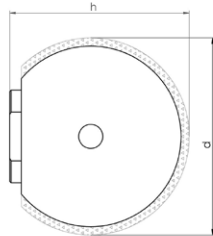
Field of Application

- Opening of laterals and inlet lines

Article-No.	d mm	h mm	Segments	Weight kg
BL 11447 3/8"UNF	30	25	16	0.1



D•GRIT Ball milling cutter



Materials to be processed

- UV CIPP
- PVC
- Felt CIPP

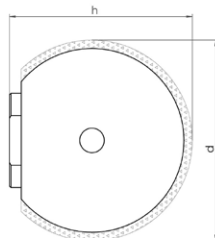
Note: Only suitable for processing CIPP liners and PVC!

Field of Application

- Opening of laterals and inlet lines
- CIPP liner finishing

Article-No.	d mm	h mm	Grit	Weight kg
70001 3/8"UNF	40	38	Diamond	0.25

D•GRIT Ball milling cutter



Materials to be processed

- UV CIPP
- PVC
- Felt CIPP

Note: Only suitable for processing CIPP liners and PVC!

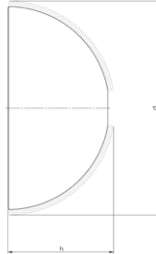
Field of Application

- Opening of laterals and inlet lines
- CIPP liner finishing

Article-No.	d mm	h mm	Grit	Weight kg
70003 3/8"UNF	30	30	Diamond	0.15



D•GRIT Half-ball milling cutter



Materials to be processed

- UV CIPP
- Felt CIPP
- PVC

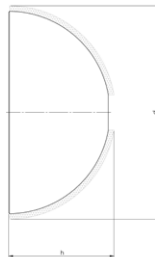
Note: Only suitable for processing CIPP liners and PVC!

Field of Application

- Opening of laterals and inlet lines
- CIPP liner finishing

Article-No.	d mm	h mm	Grit	Weight kg
70008 3/8"UNF	50	25	Diamond	0.1

D•GRIT Half-ball milling cutter



Materials to be processed

- UV CIPP
- Felt CIPP
- PVC

Note: Only suitable for processing CIPP liners and PVC!

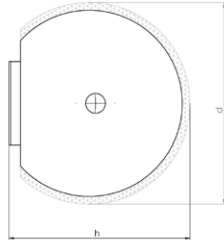
Field of Application

- Opening of laterals and inlet lines
- CIPP liner finishing

Article-No.	d mm	h mm	Grit	Weight kg
70009 3/8"UNF	40	20	Diamond	0.06



HM•LINE Ball milling cutter



Materials to be processed

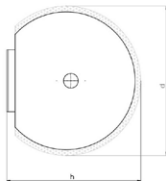
- UV CIPP
- Roots
- PVC
- Felt CIPP

Field of Application

- Opening of laterals and inlet lines
- Removal of intruding obstacles
- CIPP liner finishing

Article-No.	d mm	h mm	Grit	Weight kg
50002 3/8"UNF	40	42	Carbide	0.3

HM•LINE Ball milling cutter



Materials to be processed

- UV CIPP
- Roots
- PVC
- Felt CIPP

Field of Application

- Opening of laterals and inlet lines
- Removal of intruding obstacles
- CIPP liner finishing

Article-No.	d mm	h mm	Grit	Weight kg
50005 3/8"UNF	30	32	Carbide	0.15



HM•LINE Half-ball milling cutter



Materials to be processed

- UV CIPP
- Roots
- PVC
- Felt CIPP

Field of Application

- Opening of laterals and inlet lines
- Removal of intruding obstacles
- CIPP liner finishing

Article-No.	d mm	h mm	Grit	Weight kg
50004 3/8"UNF	40	30	Carbide	0.15

HM•LINE Half-ball milling cutter



Materials to be processed

- UV CIPP
- Roots
- PVC
- Felt CIPP

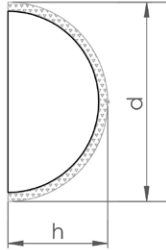
Field of Application

- Opening of laterals and inlet lines
- Removal of intruding obstacles
- CIPP liner finishing

Article-No.	d mm	h mm	Weight kg
50009 3/8"UNF	30	20	0.09



HM•LINE Half-ball milling cutter



Materials to be processed

- UV CIPP
- Roots
- PVC
- Felt CIPP

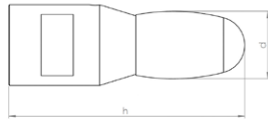
Field of Application

- Opening of laterals and inlet lines
- Removal of intruding obstacles
- CIPP liner finishing

Article-No.	d mm	h mm	Grit	Weight kg
51001 3/8"UNF	50	25	Carbide	0.1



VHM•LINE oval shaped



Materials to be processed

- Cast Iron
- Steel

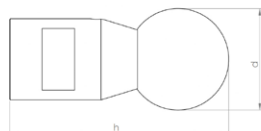
Note: Use on concrete or vitrified clay will destroy the cutting elements!

Field of Application

- Removal of intruding obstacles

Article-No.	d mm	h mm	Segments	Weight kg
60001 3/8"UNF	16	55	1	0.15

VHM•LINE ball shaped



Materials to be processed

- Cast Iron
- Steel

Note: Use on concrete or vitrified clay will destroy the cutting elements!

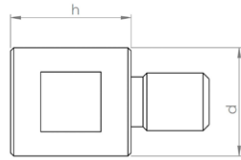
Field of Application

- Removal of intruding obstacles

Article-No.	d mm	h mm	Segments	Weight kg
60002 3/8"UNF	25	56	1	0.15



Extension 20 mm



Description

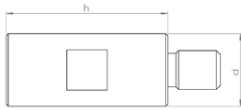
CNC fabricated tool extension for increased working radius of robot arm.

Specification

Stainless steel

Article-No.	d mm	h mm	Weight kg
90138 3/8"UNF	18	20	0.05

Extension 40 mm



Description

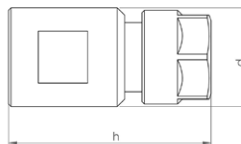
CNC fabricated tool extension for increased working radius of robot arm.

Specification

Stainless steel

Article-No.	d mm	h mm	Weight kg
90139 3/8"UNF	18	40	0.07

Adapter for mounting commercially available shank tools Ø 6 mm



Description

CNC fabricated collet chuck adapter for mounting commercially available shank tools.
e.g. burrs, brushes, flap grinders etc...
Mounting: Shank Ø 6-6,5 mm

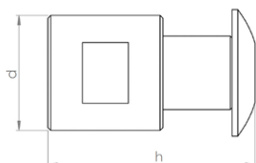
Specification

Stainless steel

Article-No.	d mm	h mm	Weight kg
90172 3/8"UNF	20	40	0.07



Adapter for mounting of 2 wheel brushes



Description

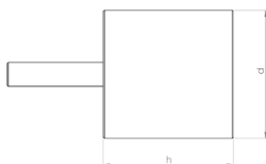
CNC fabricated adapter for mounting of 2 wheel brushes.
 Mounting shaft \varnothing 12,7 mm
 includes locking screw and cupped washer
NOTE: This adapter cannot be used to mount a single brush!

Specification

Stainless steel

Article-No.	d mm	h mm	Weight kg
90140 3/8"UNF	20	32	0.05

Mounted point-cylindrical



Description

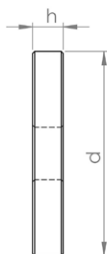
Corundum mounted point, for working on steel and cast iron.
NOTE: Only useable with adapter!

Specification

Corundum

Article-No.	d mm	h mm	Weight kg
81002	32	32	0.08

Wheel brush \varnothing 45 mm



Description

Premium rotary wire brushes for finishing work on CIPP liners and PVC.
 Mounting hole \varnothing 12,7 mm
NOTE: May be used only with matching adapter! Packing unit: 2 pieces

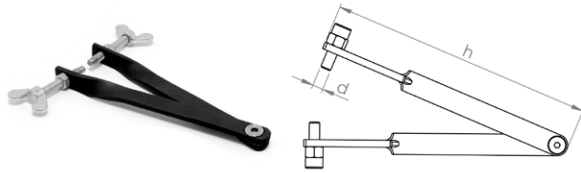
Specification

Wire thickness: \varnothing 0,3 mm

Article-No.	d mm	h mm	Weight kg
80025	45	8	0.05



Pin-tipped tongs for safe tool changeover



Description

The tongs are fitted with pin (with adjustable gripping depth) which are inserted into the gripping holes of the milling tools, permitting safe changeover without risking damage to the tooling.

Specification

Steel

Article-No.	d mm	h mm	Weight kg
92002	5	150	0.125

Open-end wrench 17 mm



Description

The flat design of the wrench is particularly well suited for milling tools with low base height.


Specification

Steel

Article-No.	d mm	h mm	Weight kg
92001 SW17	17	2	0.08



N•TEC II®



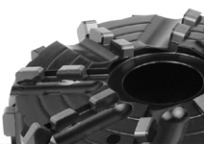
Field-Proven Standard Diamond Tools with Outstanding Value for Purchase Investment

Materials to be processed

- Reinforced Concrete
- Concrete
- Deposits / Fouling
- Cast Iron
- Vitrified Clay

Page 103

BLACK•LINE




High-Tech Milling Tools made of PCD with Unbeatable Cutting and Stock Removal Performance for Almost Every Material

Materials to be processed

- UV CIPP
- Roots
- PVC
- Felt CIPP

Page 104

linerCUT Pro®




Absolutely Smooth-Running and Precise PCD Cutting Tools for Opening CIPP - Optimized for UV CIPP -

Materials to be processed

- UV CIPP
- PVC
- Felt CIPP

Page 108

linerCUT Pro® 2.0




Absolutely Smooth-Running and Precise PCD Cutting Tools for Opening CIPP - All Kinds of CIPP and PVC -

Materials to be processed

- UV CIPP
- PVC
- Felt CIPP

Page 109

D•GRIT



Milling Tools with Diamond Granules for Opening CIPP - Optimal for UV CIPP and Lined Cast Iron Pipes -

Materials to be processed

- UV CIPP
- PVC
- Felt CIPP

Page 110

HM•LINE




Cost-Efficient Milling Tools with Carbide Granulate Tipping for Opening and Reworking CIPP

Materials to be processed

- UV CIPP
- Roots
- PVC
- Felt CIPP

Page 111

VHM•LINE



Special Milling Tools for Processing Steel and Cast Iron

Materials to be processed

- Cast Iron
- Steel

Page 113



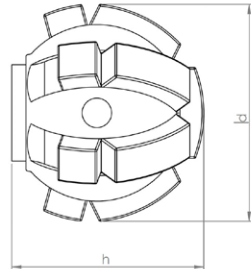
Functional Accessories

High-quality brushes, adapters, extensions, etc.

Page 114



N•TEC II® Ball milling cutter



Materials to be processed

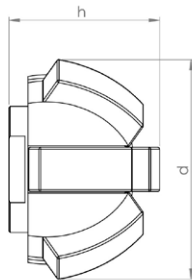
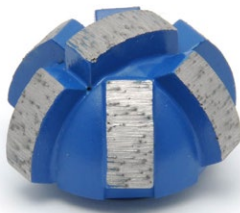
- Reinforced Concrete
- Concrete
- Deposits / Fouling
- Cast Iron
- Vitrified Clay

Field of Application

- Preparatory milling of laterals
- Removal of intruding laterals
- Removal of intruding obstacles

Article-No.	d mm	h mm	Segments	Weight kg
20021 1/4"UNC	40	37	13	0.2

N•TEC II® Half-ball milling cutter



Materials to be processed

- Reinforced Concrete
- Concrete
- Deposits / Fouling
- Cast Iron
- Vitrified Clay

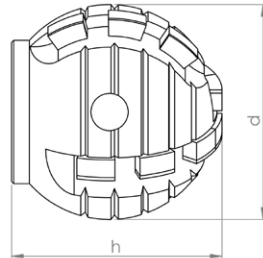
Field of Application

- Preparatory milling of laterals
- Removal of intruding laterals
- Frontal milling
- Removal of intruding obstacles

Article-No.	d mm	h mm	Segments	Weight kg
20035 1/4"UNC	36	25	7	0.1



BLACK-LINE Ball milling cutter



Materials to be processed

- UV CIPP
- PVC
- Roots
- Felt CIPP

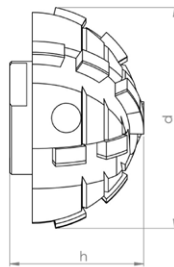
Note: Use on steel-reinforced concrete will destroy the cutting elements!

Field of Application

- Opening of laterals and inlet lines
- Removal of intruding obstacles

Article-No.	d mm	h mm	Segments	Weight kg
BL 11408 1/4"UNC	30	32	14	0.1

BLACK-LINE Half-ball milling cutter



Materials to be processed

- UV CIPP
- PVC
- Roots
- Felt CIPP

Note: Use on steel-reinforced concrete will destroy the cutting elements!

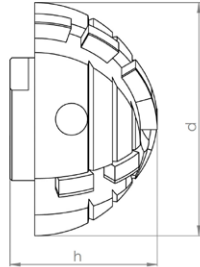
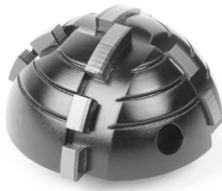
Field of Application

- Opening of laterals and inlet lines
- Removal of intruding obstacles

Article-No.	d mm	h mm	Segments	Weight kg
BL 11465 1/4"UNC	40	25	16	0.15



BLACK-LINE Half-ball milling cutter



Materials to be processed

- UV CIPP
- PVC
- Roots
- Felt CIPP

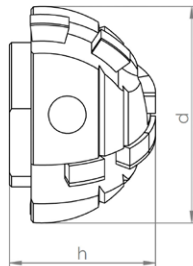
Note: Use on steel-reinforced concrete will destroy the cutting elements!

Field of Application

- Opening of laterals and inlet lines
- Removal of intruding obstacles

Article-No.	d mm	h mm	Segments	Weight kg
BL 11428 1/4"UNC	40	25	12	0.07

BLACK-LINE Half-ball milling cutter



Materials to be processed

- UV CIPP
- PVC
- Roots
- Felt CIPP

Note: Use on steel-reinforced concrete will destroy the cutting elements!

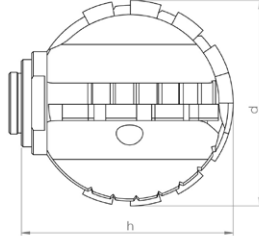
Field of Application

- Opening of laterals and inlet lines
- Removal of intruding obstacles

Article-No.	d mm	h mm	Segments	Weight kg
BL 11429 1/4"UNC	30	20	8	0.06



BLACK-LINE Ball milling cutter Type ProView®



Materials to be processed

- UV CIPP
- Roots
- PVC
- Felt CIPP

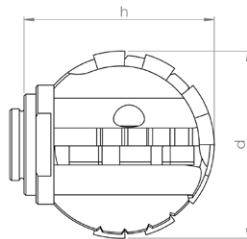
Note: Only suitable for processing CIPP liners and PVC and for cutting roots!

Field of Application

- Opening of laterals and inlet lines
- Removal of intruding obstacles

Article-No.	d mm	h mm	Segments	Weight kg
BL 11103 1/4"UNC	40	38	18	0.15

BLACK-LINE Ball milling cutter Type ProView®



Materials to be processed

- UV CIPP
- Roots
- PVC
- Felt CIPP

Note: Only suitable for processing CIPP liners and PVC and for cutting roots!

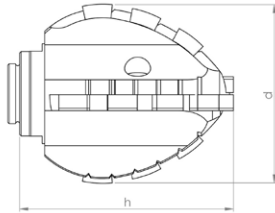
Field of Application

- Opening of laterals and inlet lines
- Removal of intruding obstacles

Article-No.	d mm	h mm	Segments	Weight kg
BL 11101 1/4"UNC	32	30	14	0.06



BLACK-LINE Double-cone milling cutter Type ProView®



Materials to be processed

- UV CIPP
- Roots
- PVC
- Felt CIPP

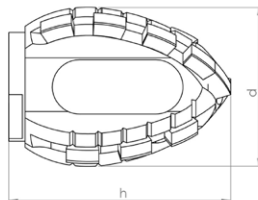
Note: Only suitable for processing CIPP liners and PVC and for cutting roots!

Field of Application

- Opening of laterals and inlet lines

Article-No.	d mm	h mm	Segments	Weight kg
BL 11107 1/4"UNC	36	41	16	0.1

BLACK-LINE Double-cone milling cutter Type ProView®



Materials to be processed

- UV CIPP
- Roots
- PVC
- Felt CIPP

Note: Only suitable for processing CIPP liners and PVC and for cutting roots!

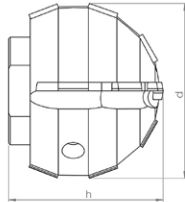
Field of Application

- Opening of laterals and inlet lines

Article-No.	d mm	h mm	Segments	Weight kg
BL 11112 1/4"UNC	36	41	16	0.1



linerCUT Pro® Ball milling cutter



Materials to be processed

- UV CIPP
- Felt CIPP
- PVC

Note: Only suitable for processing CIPP liners and PVC!

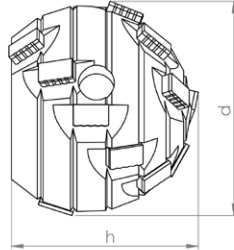
Field of Application

- Opening of laterals and inlet lines

Article-No.	d mm	h mm	Segments	Weight kg
BL 11442 1/4"UNC	30	29	14	0.1



linerCUT Pro® 2.0 Ball milling cutter



Materials to be processed

- UV CIPP
- Felt CIPP
- PVC

Note: Only suitable for processing CIPP liners and PVC!

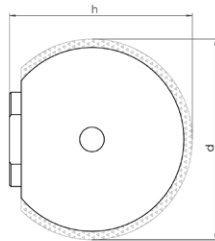
Field of Application

- Opening of laterals and inlet lines

Article-No.	d mm	h mm	Segments	Weight kg
BL 11447 1/4"UNC	30	25	16	0.1



D•GRIT Ball milling cutter



Materials to be processed

- UV CIPP
- Felt CIPP
- PVC

Note: Only suitable for processing CIPP liners and PVC!

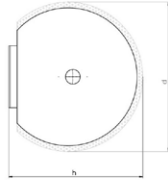
Field of Application

- Opening of laterals and inlet lines
- CIPP liner finishing

Article-No.	d mm	h mm	Grit	Weight kg
70003 1/4"UNC	30	30	Diamond	0.15



HM•LINE Ball milling cutter



Materials to be processed

- UV CIPP
- Roots
- PVC
- Felt CIPP

Field of Application

- Opening of laterals and inlet lines
- Removal of intruding obstacles
- CIPP liner finishing

Article-No.	d mm	h mm	Grit	Weight kg
50005 1/4"UNC	30	32	Carbide	0.15

HM•LINE Half-ball milling cutter



Materials to be processed

- UV CIPP
- Roots
- PVC
- Felt CIPP

Field of Application

- Opening of laterals and inlet lines
- Removal of intruding obstacles
- CIPP liner finishing

Article-No.	d mm	h mm	Grit	Weight kg
50004 1/4"UNC	40	30	Carbide	0.15



HM-LINE Half-ball milling cutter



Materials to be processed

- UV CIPP
- PVC
- Roots
- Felt CIPP

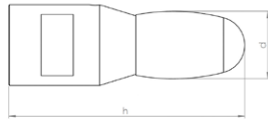
Field of Application

- Opening of laterals and inlet lines
- Removal of intruding obstacles
- CIPP liner finishing

Article-No.	d mm	h mm	Weight kg
50009 1/4"UNC	30	20	0.09



VHM•LINE oval shaped



Materials to be processed

- Cast Iron
- Steel

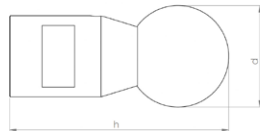
Note: Use on concrete or vitrified clay will destroy the cutting elements!

Field of Application

- Removal of intruding obstacles

Article-No.	d mm	h mm	Segments	Weight kg
60001 1/4"UNC	16	55	1	0.15

VHM•LINE ball shaped



Materials to be processed

- Cast Iron
- Steel

Note: Use on concrete or vitrified clay will destroy the cutting elements!

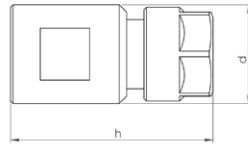
Field of Application

- Removal of intruding obstacles

Article-No.	d mm	h mm	Segments	Weight kg
60002 1/4"UNC	25	56	1	0.15



Adapter for mounting commercially available shank tools Ø 6 mm



Description

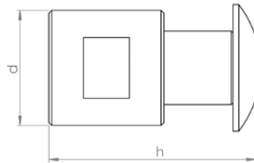
CNC fabricated collet chuck adapter for mounting commercially available shank tools.
 e.g. burrs, brushes, flap grinders etc...
 Mounting: Shank Ø 6-6,5 mm

Specification

Stainless steel

Article-No.	d mm	h mm	Weight kg
90172 1/4"UNC	20	40	0.07

Adapter for mounting of 2 wheel brushes



Description

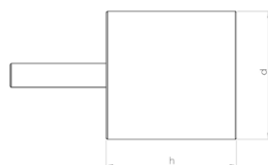
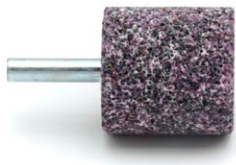
CNC fabricated adapter for mounting of 2 wheel brushes.
 Mounting shaft Ø 12,7 mm
 includes locking screw and cupped washer
NOTE: This adapter cannot be used to mount a single brush!

Specification

Stainless steel

Article-No.	d mm	h mm	Weight kg
90145 1/4"UNC	20	32	0.05

Mounted point-cylindrical



Description

Corundum mounted point, for working on steel and cast iron.
NOTE: Only useable with adapter!

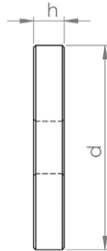
Specification

Corundum

Article-No.	d mm	h mm	Weight kg
81002	32	32	0.08



Wheel brush Ø 45 mm



Description

Premium rotary wire brushes for finishing work on CIPP liners and PVC.

Mounting hole Ø 12,7 mm

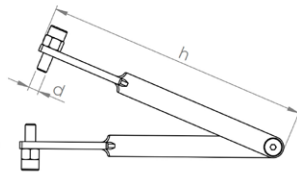
NOTE: May be used only with matching adapter! Packing unit: 2 pieces

Specification

Wire thickness: Ø 0,3 mm

Article-No.	d mm	h mm	Weight kg
80025	45	8	0.05

Pin-tipped tongs for safe tool changeover



Description

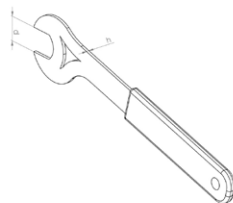
The tongs are fitted with pin (with adjustable gripping depth) witch are inserted into the gripping holes of the milling tools, permitting safe changeover without risking damage to the tooling.

Specification

Steel

Article-No.	d mm	h mm	Weight kg
92002	5	150	0.125

Open-end wrench 17 mm



Description

The flat design of the wrench is particularly well suited for milling tools with low base height.

Specification

Steel

Article-No.	d mm	h mm	Weight kg
92001 SW17	17	2	0.08