

PRODUCT PROGRAMME

Product catalog for
robots of the brand

RS Cutter*

PRODUCT PROGRAMME 2025

TABLE OF CONTENTS


Robot type	Page
RS Cutter* DN 80-200*	3



The tables of contents in this catalog are interactive. A click will lead you directly to the desired target page.



N•TEC II®



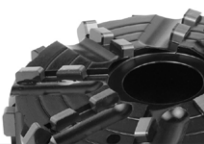
Field-Proven Standard Diamond Tools with Outstanding Value for Purchase Investment

Materials to be processed

- Reinforced Concrete
- Concrete
- Deposits / Fouling
- Cast Iron
- Vitrified Clay

Page 5

BLACK•LINE




High-Tech Milling Tools made of PCD with Unbeatable Cutting and Stock Removal Performance for Almost Every Material

Materials to be processed

- UV CIPP
- Roots
- PVC
- Felt CIPP

Page 7

linerCUT Pro®




Absolutely Smooth-Running and Precise PCD Cutting Tools for Opening CIPP - Optimized for UV CIPP -

Materials to be processed

- UV CIPP
- PVC
- Felt CIPP

Page 14

linerCUT Pro® 2.0




Absolutely Smooth-Running and Precise PCD Cutting Tools for Opening CIPP - All Kinds of CIPP and PVC -

Materials to be processed

- UV CIPP
- PVC
- Felt CIPP

Page 15

D•GRIT



Milling Tools with Diamond Granules for Opening CIPP - Optimal for UV CIPP and Lined Cast Iron Pipes -

Materials to be processed

- UV CIPP
- PVC
- Felt CIPP

Page 16

HM•LINE




Cost-Efficient Milling Tools with Carbide Granulate Tipping for Opening and Reworking CIPP

Materials to be processed

- UV CIPP
- Roots
- PVC
- Felt CIPP

Page 18

VHM•LINE



Special Milling Tools for Processing Steel and Cast Iron

Materials to be processed

- Cast Iron
- Steel

Page 21



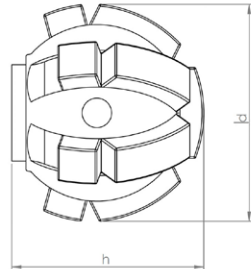
Functional Accessories

High-quality brushes, adapters, extensions, etc.

Page 22



N•TEC II® Ball milling cutter



Materials to be processed

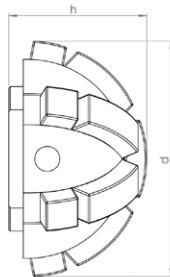
- Reinforced Concrete
- Concrete
- Deposits / Fouling
- Cast Iron
- Vitrified Clay

Field of Application

- Preparatory milling of laterals
- Removal of intruding laterals
- Removal of intruding obstacles

Article-No.	d mm	h mm	Segments	Weight kg
20021 3/8"UNF	40	37	13	0.2

N•TEC II® Half-ball milling cutter



Materials to be processed

- Reinforced Concrete
- Concrete
- Deposits / Fouling
- Cast Iron
- Vitrified Clay

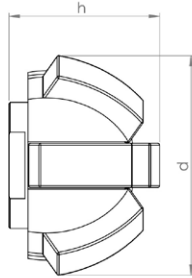
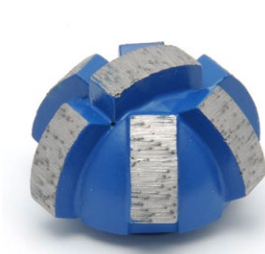
Field of Application

- Preparatory milling of laterals
- Removal of intruding laterals
- Frontal milling
- Removal of intruding obstacles

Article-No.	d mm	h mm	Segments	Weight kg
20034 3/8"UNF	50	29	13	0.15



N•TEC II Half-ball milling cutter



Materials to be processed

- Reinforced Concrete
- Concrete
- Deposits / Fouling
- Cast Iron
- Vitrified Clay

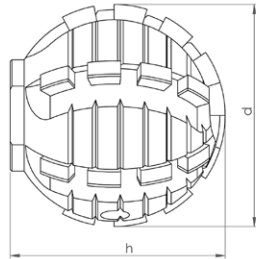
Field of Application

- Preparatory milling of laterals
- Removal of intruding laterals
- Frontal milling
- Removal of intruding obstacles

Article-No.	d mm	h mm	Segments	Weight kg
20035 3/8"UNF	36	25	7	0.1



BLACK-LINE Ball milling cutter



Materials to be processed

- UV CIPP
- Roots
- PVC
- Felt CIPP

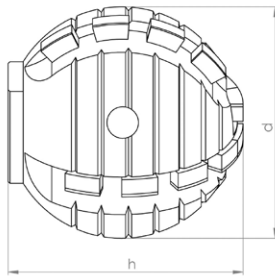
Note: Only suitable for processing CIPP liners and PVC and for cutting roots!

Field of Application

- Opening of laterals and inlet lines
- Removal of intruding obstacles

Article-No.	d mm	h mm	Segments	Weight kg
BL 11446 3/8"UNF	40	42	26	0.25

BLACK-LINE Ball milling cutter



Materials to be processed

- UV CIPP
- Roots
- PVC
- Felt CIPP

Note: Only suitable for processing CIPP liners and PVC and for cutting roots!

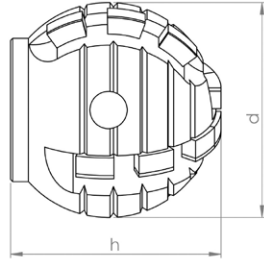
Field of Application

- Opening of laterals and inlet lines
- Removal of intruding obstacles

Article-No.	d mm	h mm	Segments	Weight kg
BL 11414 3/8"UNF	40	42	18	0.25



BLACK-LINE Ball milling cutter



Materials to be processed

- UV CIPP
- PVC
- Roots
- Felt CIPP

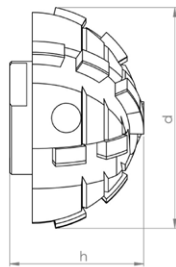
Note: Use on steel-reinforced concrete will destroy the cutting elements!

Field of Application

- Opening of laterals and inlet lines
- Removal of intruding obstacles

Article-No.	d mm	h mm	Segments	Weight kg
BL 11408 3/8"UNF	30	32	14	0.1

BLACK-LINE Half-ball milling cutter



Materials to be processed

- UV CIPP
- PVC
- Roots
- Felt CIPP

Note: Use on steel-reinforced concrete will destroy the cutting elements!

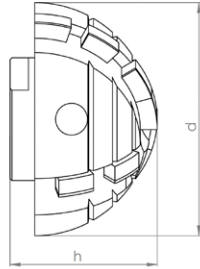
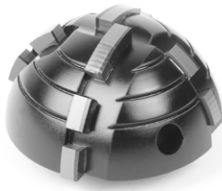
Field of Application

- Opening of laterals and inlet lines
- Removal of intruding obstacles

Article-No.	d mm	h mm	Segments	Weight kg
BL 11465 3/8"UNF	40	25	16	0.15



BLACK-LINE Half-ball milling cutter



Materials to be processed

- UV CIPP
- Roots
- PVC
- Felt CIPP

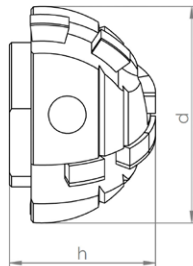
Note: Use on steel-reinforced concrete will destroy the cutting elements!

Field of Application

- Opening of laterals and inlet lines
- Removal of intruding obstacles

Article-No.	d mm	h mm	Segments	Weight kg
BL 11428 3/8"UNF	40	25	12	0.07

BLACK-LINE Half-ball milling cutter



Materials to be processed

- UV CIPP
- Roots
- PVC
- Felt CIPP

Note: Use on steel-reinforced concrete will destroy the cutting elements!

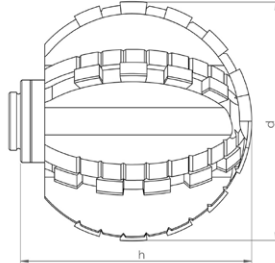
Field of Application

- Opening of laterals and inlet lines
- Removal of intruding obstacles

Article-No.	d mm	h mm	Segments	Weight kg
BL 11429 3/8"UNF	30	20	8	0.06



BLACK-LINE Ball milling cutter Type ProView®



Materials to be processed

- UV CIPP
- Roots
- PVC
- Felt CIPP

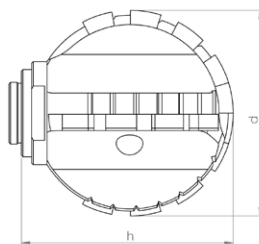
Note: Only suitable for processing CIPP liners and PVC and for cutting roots!

Field of Application

- Opening of laterals and inlet lines
- Removal of intruding obstacles

Article-No.	d mm	h mm	Segments	Weight kg
BL 11108 3/8"UNF	50	46	30	0.15

BLACK-LINE Ball milling cutter Type ProView®



Materials to be processed

- UV CIPP
- Roots
- PVC
- Felt CIPP

Note: Only suitable for processing CIPP liners and PVC and for cutting roots!

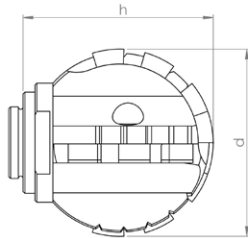
Field of Application

- Opening of laterals and inlet lines
- Removal of intruding obstacles

Article-No.	d mm	h mm	Segments	Weight kg
BL 11103 3/8"UNF	40	38	18	0.15



BLACK-LINE Ball milling cutter Type ProView®



Materials to be processed

- UV CIPP
- Roots
- PVC
- Felt CIPP

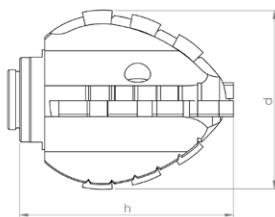
Note: Only suitable for processing CIPP liners and PVC and for cutting roots!

Field of Application

- Opening of laterals and inlet lines
- Removal of intruding obstacles

Article-No.	d mm	h mm	Segments	Weight kg
BL 11101 3/8"UNF	32	30	14	0.06

BLACK-LINE Double-cone milling cutter Type ProView®



Materials to be processed

- UV CIPP
- Roots
- PVC
- Felt CIPP

Note: Only suitable for processing CIPP liners and PVC and for cutting roots!

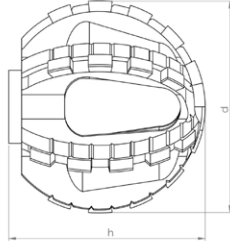
Field of Application

- Opening of laterals and inlet lines

Article-No.	d mm	h mm	Segments	Weight kg
BL 11107 3/8"UNF	36	41	16	0.1



BLACK-LINE Ball milling cutter Type ProView®



Materials to be processed

- UV CIPP
- Roots
- PVC
- Felt CIPP

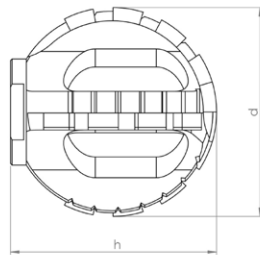
Note: Only suitable for processing CIPP liners and PVC and for cutting roots!

Field of Application

- Opening of laterals and inlet lines
- Removal of intruding obstacles

Article-No.	d mm	h mm	Segments	Weight kg
BL 11114 3/8"UNF	50	46	30	0.15

BLACK-LINE Ball milling cutter Type ProView®



Materials to be processed

- UV CIPP
- Roots
- PVC
- Felt CIPP

Note: Only suitable for processing CIPP liners and PVC and for cutting roots!

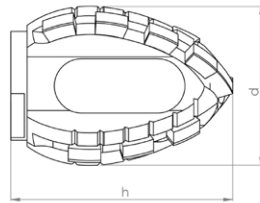
Field of Application

- Opening of laterals and inlet lines
- Removal of intruding obstacles

Article-No.	d mm	h mm	Segments	Weight kg
BL 11110 3/8"UNF	40	38	18	0.15



BLACK-LINE Double-cone milling cutter Type ProView®



Materials to be processed

- UV CIPP
- Roots
- PVC
- Felt CIPP

Note: Only suitable for processing CIPP liners and PVC and for cutting roots!

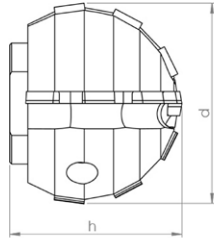
Field of Application

- Opening of laterals and inlet lines

Article-No.	d mm	h mm	Segments	Weight kg
BL 11112 3/8"UNF	36	41	16	0.1



linerCUT Pro® Ball milling cutter



Materials to be processed

- UV CIPP
- Felt CIPP
- PVC

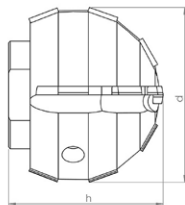
Note: Only suitable for processing CIPP liners and PVC!

Field of Application

- Opening of laterals and inlet lines

Article-No.	d mm	h mm	Segments	Weight kg
BL 11443 3/8"UNF	40	36	12	0.2

linerCUT Pro® Ball milling cutter



Materials to be processed

- UV CIPP
- Felt CIPP
- PVC

Note: Only suitable for processing CIPP liners and PVC!

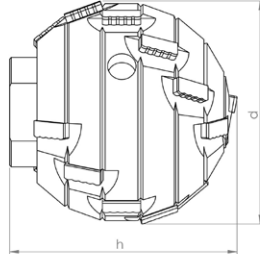
Field of Application

- Opening of laterals and inlet lines

Article-No.	d mm	h mm	Segments	Weight kg
BL 11442 3/8"UNF	30	29	14	0.1



linerCUT Pro^{2.0} Ball milling cutter



Materials to be processed

- UV CIPP
- Felt CIPP
- PVC

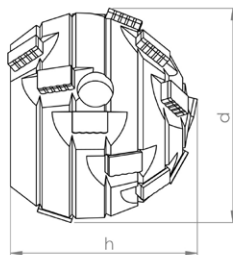
Note: Only suitable for processing CIPP liners and PVC!

Field of Application

- Opening of laterals and inlet lines

Article-No.	d mm	h mm	Segments	Weight kg
BL 11448 3/8"UNF	40	40	18	0.25

linerCUT Pro^{2.0} Ball milling cutter



Materials to be processed

- UV CIPP
- Felt CIPP
- PVC

Note: Only suitable for processing CIPP liners and PVC!

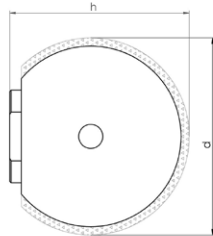
Field of Application

- Opening of laterals and inlet lines

Article-No.	d mm	h mm	Segments	Weight kg
BL 11447 3/8"UNF	30	25	16	0.1



D•GRIT Ball milling cutter



Materials to be processed

- UV CIPP
- Felt CIPP
- PVC

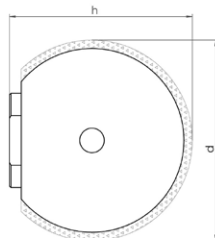
Note: Only suitable for processing CIPP liners and PVC!

Field of Application

- Opening of laterals and inlet lines
- CIPP liner finishing

Article-No.	d mm	h mm	Grit	Weight kg
70001 3/8"UNF	40	38	Diamond	0.25

D•GRIT Ball milling cutter



Materials to be processed

- UV CIPP
- Felt CIPP
- PVC

Note: Only suitable for processing CIPP liners and PVC!

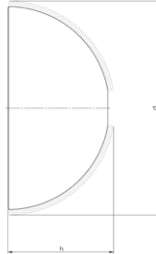
Field of Application

- Opening of laterals and inlet lines
- CIPP liner finishing

Article-No.	d mm	h mm	Grit	Weight kg
70003 3/8"UNF	30	30	Diamond	0.15



D•GRIT Half-ball milling cutter



Materials to be processed

- UV CIPP
- Felt CIPP
- PVC

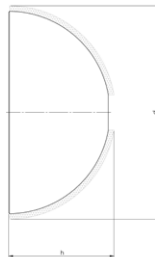
Note: Only suitable for processing CIPP liners and PVC!

Field of Application

- Opening of laterals and inlet lines
- CIPP liner finishing

Article-No.	d mm	h mm	Grit	Weight kg
70008 3/8"UNF	50	25	Diamond	0.1

D•GRIT Half-ball milling cutter



Materials to be processed

- UV CIPP
- Felt CIPP
- PVC

Note: Only suitable for processing CIPP liners and PVC!

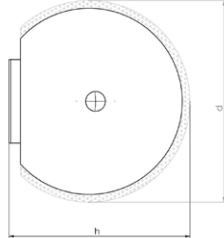
Field of Application

- Opening of laterals and inlet lines
- CIPP liner finishing

Article-No.	d mm	h mm	Grit	Weight kg
70009 3/8"UNF	40	20	Diamond	0.06



HM•LINE Ball milling cutter



Materials to be processed

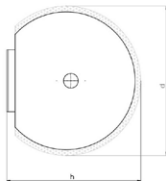
- UV CIPP
- Roots
- PVC
- Felt CIPP

Field of Application

- Opening of laterals and inlet lines
- Removal of intruding obstacles
- CIPP liner finishing

Article-No.	d mm	h mm	Grit	Weight kg
50002 3/8"UNF	40	42	Carbide	0.3

HM•LINE Ball milling cutter



Materials to be processed

- UV CIPP
- Roots
- PVC
- Felt CIPP

Field of Application

- Opening of laterals and inlet lines
- Removal of intruding obstacles
- CIPP liner finishing

Article-No.	d mm	h mm	Grit	Weight kg
50005 3/8"UNF	30	32	Carbide	0.15



HM•LINE Half-ball milling cutter



Materials to be processed

- UV CIPP
- Roots
- PVC
- Felt CIPP

Field of Application

- Opening of laterals and inlet lines
- Removal of intruding obstacles
- CIPP liner finishing

Article-No.	d mm	h mm	Grit	Weight kg
50004 3/8"UNF	40	30	Carbide	0.15

HM•LINE Half-ball milling cutter



Materials to be processed

- UV CIPP
- Roots
- PVC
- Felt CIPP

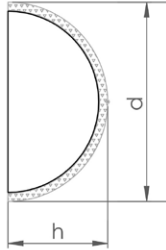
Field of Application

- Opening of laterals and inlet lines
- Removal of intruding obstacles
- CIPP liner finishing

Article-No.	d mm	h mm	Weight kg
50009 3/8"UNF	30	20	0.09



HM•LINE Half-ball milling cutter



Materials to be processed

- UV CIPP
- Roots
- PVC
- Felt CIPP

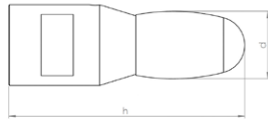
Field of Application

- Opening of laterals and inlet lines
- Removal of intruding obstacles
- CIPP liner finishing

Article-No.	d mm	h mm	Grit	Weight kg
51001 3/8"UNF	50	25	Carbide	0.1



VHM•LINE oval shaped



Materials to be processed

- Cast Iron
- Steel

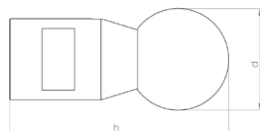
Note: Use on concrete or vitrified clay will destroy the cutting elements!

Field of Application

- Removal of intruding obstacles

Article-No.	d mm	h mm	Segments	Weight kg
60001 3/8"UNF	16	55	1	0.15

VHM•LINE ball shaped



Materials to be processed

- Cast Iron
- Steel

Note: Use on concrete or vitrified clay will destroy the cutting elements!

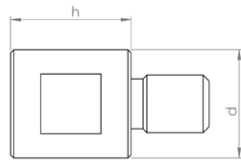
Field of Application

- Removal of intruding obstacles

Article-No.	d mm	h mm	Segments	Weight kg
60002 3/8"UNF	25	56	1	0.15

RS Cutter* DN 80-200*

Extension 20 mm



Description

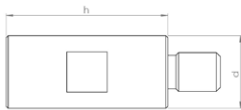
CNC fabricated tool extension for increased working radius of robot arm.

Specification

Stainless steel

Article-No.	d mm	h mm	Weight kg
90138 3/8"UNF	18	20	0.05

Extension 40 mm



Description

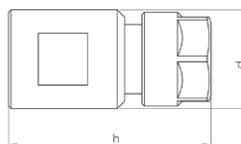
CNC fabricated tool extension for increased working radius of robot arm.

Specification

Stainless steel

Article-No.	d mm	h mm	Weight kg
90139 3/8"UNF	18	40	0.07

Adapter for mounting commercially available shank tools Ø 6 mm



Description

CNC fabricated collet chuck adapter for mounting commercially available shank tools.
e.g. burrs, brushes, flap grinders etc...
Mounting: Shank Ø 6-6,5 mm

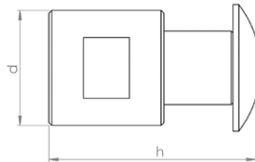
Specification

Stainless steel

Article-No.	d mm	h mm	Weight kg
90172 3/8"UNF	20	40	0.07



Adapter for mounting of 2 wheel brushes



Description

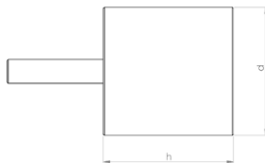
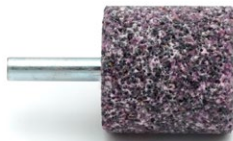
CNC fabricated adapter for mounting of 2 wheel brushes.
Mounting shaft \varnothing 12,7 mm
includes locking screw and cupped washer
NOTE: This adapter cannot be used to mount a single brush!

Specification

Stainless steel

Article-No.	d mm	h mm	Weight kg
90140 3/8"UNF	20	32	0.05

Mounted point-cylindrical



Description

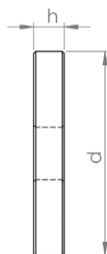
Corundum mounted point, for working on steel and cast iron.
NOTE: Only useable with adapter!

Specification

Corundum

Article-No.	d mm	h mm	Weight kg
81002	32	32	0.08

Wheel brush \varnothing 45 mm



Description

Premium rotary wire brushes for finishing work on CIPP liners and PVC.
Mounting hole \varnothing 12,7 mm
NOTE: May be used only with matching adapter! Packing unit: 2 pieces

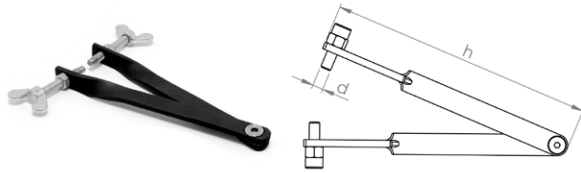
Specification

Wire thickness: \varnothing 0,3 mm

Article-No.	d mm	h mm	Weight kg
80025	45	8	0.05



Pin-tipped tongs for safe tool changeover



Description

The tongs are fitted with pin (with adjustable gripping depth) which are inserted into the gripping holes of the milling tools, permitting safe changeover without risking damage to the tooling.

Specification

Steel

Article-No.	d mm	h mm	Weight kg
92002	5	150	0.125

Open-end wrench 17 mm



Description

The flat design of the wrench is particularly well suited for milling tools with low base height.

Specification

Steel

Article-No.	d mm	h mm	Weight kg
92001 SW17	17	2	0.08